



# *Essentials of Home based monitoring and virtual care in COVID-19*

Dr Oommen John MD  
New Delhi, India

StepOne



The George Institute  
for Global Health India

*Better treatments. Better care. Healthier societies.*



# *Essentials of Home based monitoring and virtual care in COVID-19*



*Evidence base on  
home monitoring in  
acute Covid-19*



*Guidance  
on oximetry*



*Training for Health  
Professionals in remote  
monitoring*



*Prioritisation decisions  
in resource-limited  
settings*

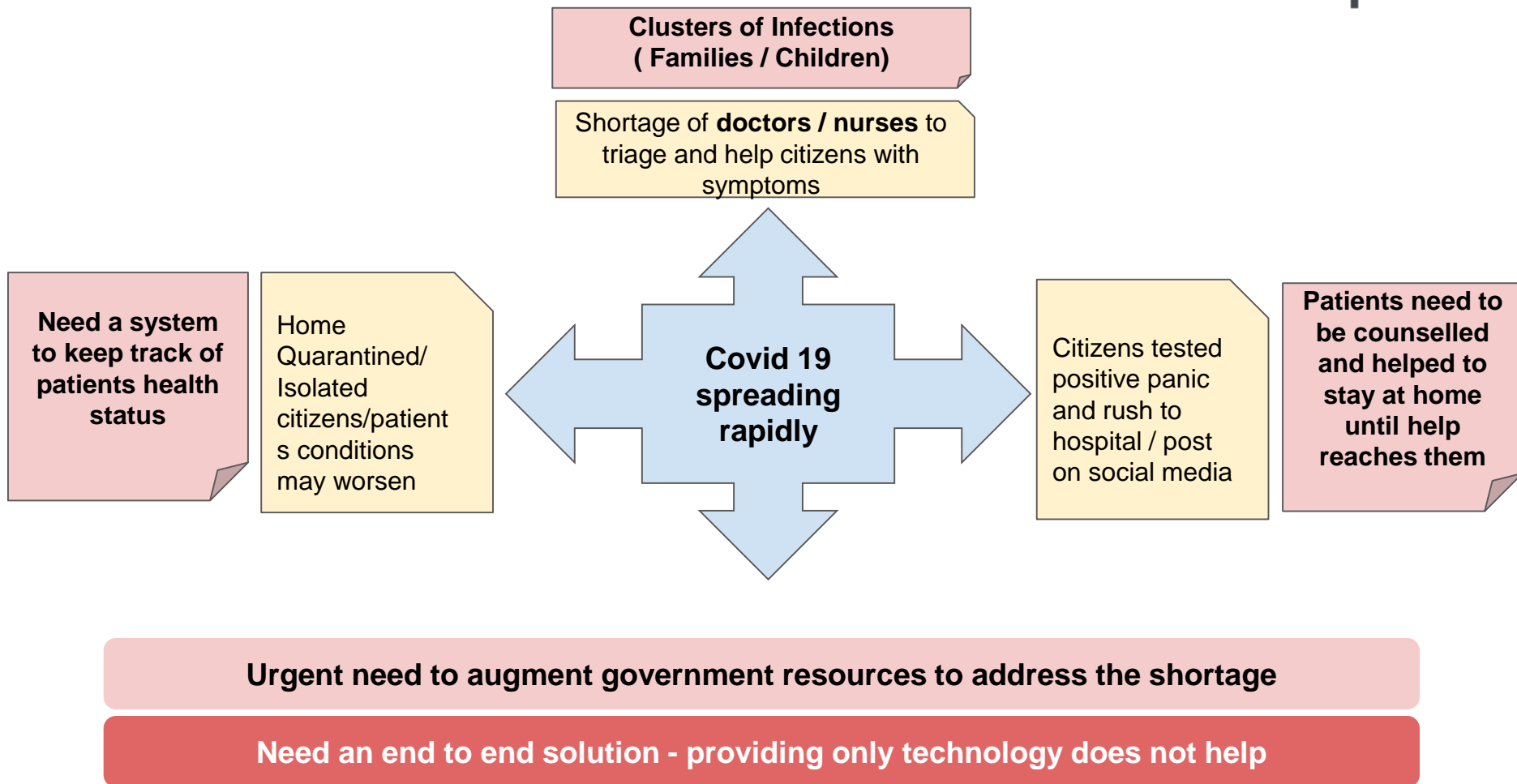
**StepOne**



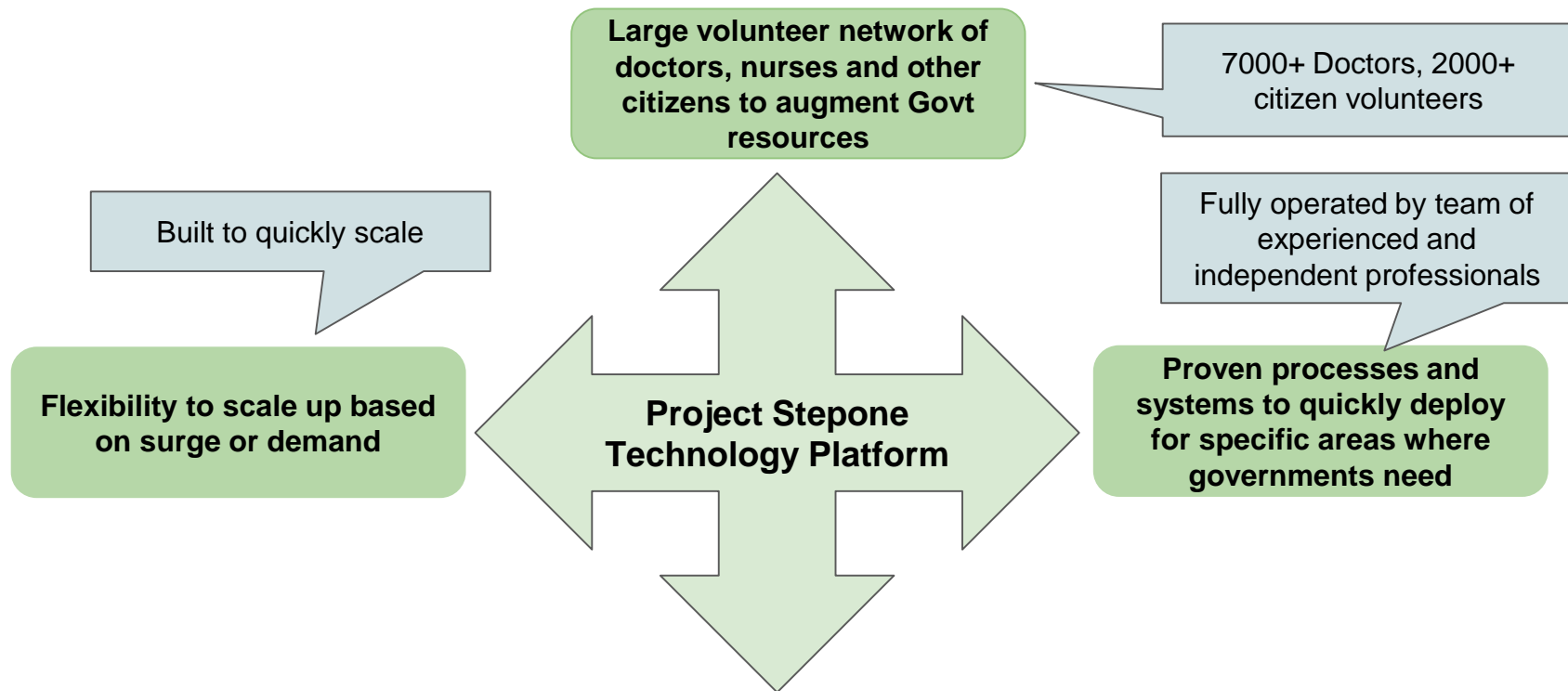
The George Institute  
for Global Health India

*Better treatments. Better care. Healthier societies.*

# Why augment health systems capacity



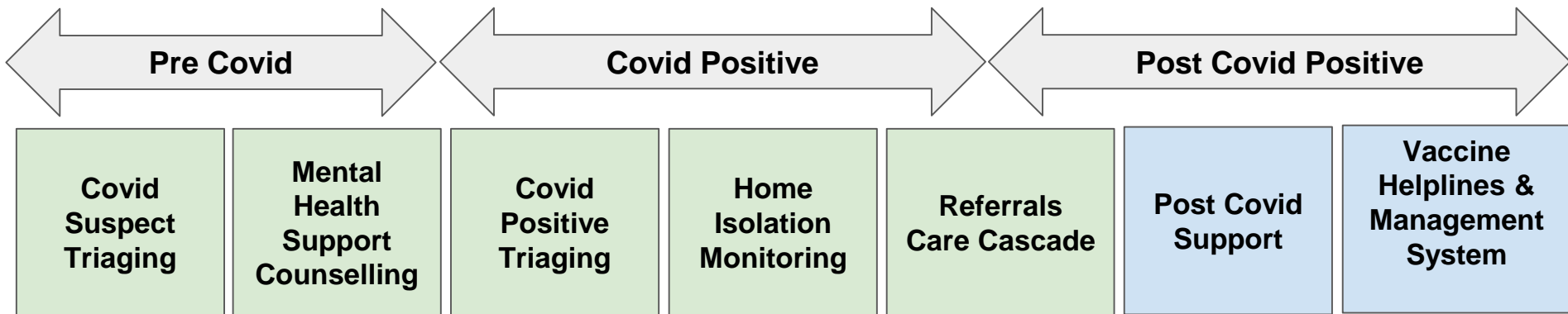
# The Project StepOne Solution



**StepOne augments government resources with trained volunteers**

**StepOne helps govt go from problem to operational at scale in a few days**

# Complete Solution Set for Covid Management



## States/Cities since March 2020 (29 - 15+14):

**States/UT:** Karnataka, Chattisgarh, Uttarakhand, Delhi, Punjab, Puducherry, Bihar, Maharashtra, Odisha, Nagaland, Jharkhand, Meghalaya, Manipur, Goa, GOI-AYUSH

**Cities:** Pune, East Kameng, Latur, Sangli, Cuddalore, Coimbatore,, Nagpur, Satara, Mumbai, Gurugram, Navi Mumbai, Pimpri Chinchwad, Faridabad, Lakhimpur Khetri

**Others:** Bihar AES, Odisha Workers helpline, Covid Rasksham, Blr Zonal helplines etc

## States/Cities NOT live (4 - 3 +1):

Jammu & Kashmir, Assam, Arunachal Pradesh,, Mira Bhaindar,

## Recent Impact (27 May 2021)

**2.1 M** tele-consults (last 150 days)

**20 K** mental health consultations (last 150 days)

**20K** doctors, paramedics & trained HCWs

Live in **20 states/UTs**

**1.6 Lakh** patients helped **per day** in **April 2021**

**3.1 Lakh** Patients helped **per day** in **May 2021**

Connected over **5 Million** Covid Patients

**Solution suite across all stages of Covid fight lifecycle**

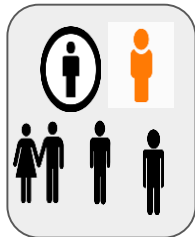
**Customizable and integrates smoothly with existing government processes!**

# Covid Helpline

StepOne

## Telemed Helpline Telecom Grid

- high capacity, scalable and fault tolerant telecom infra, **lakhs of lines** on demand



*Calls*



**Dedicated Covid Helpline**  
plus also State  
**Medical Helpline**  
Ex. 104

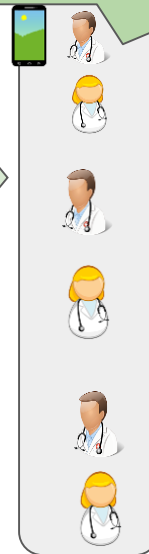
**Automated patient screening for Symptoms & contact history and travel - intelligent voice enabled system clinically sound**

*Healthy patients*



**Large volunteer network of thousands of doctors** login via Telemd mobile App and consult with patients

*Queue of patients to consult*



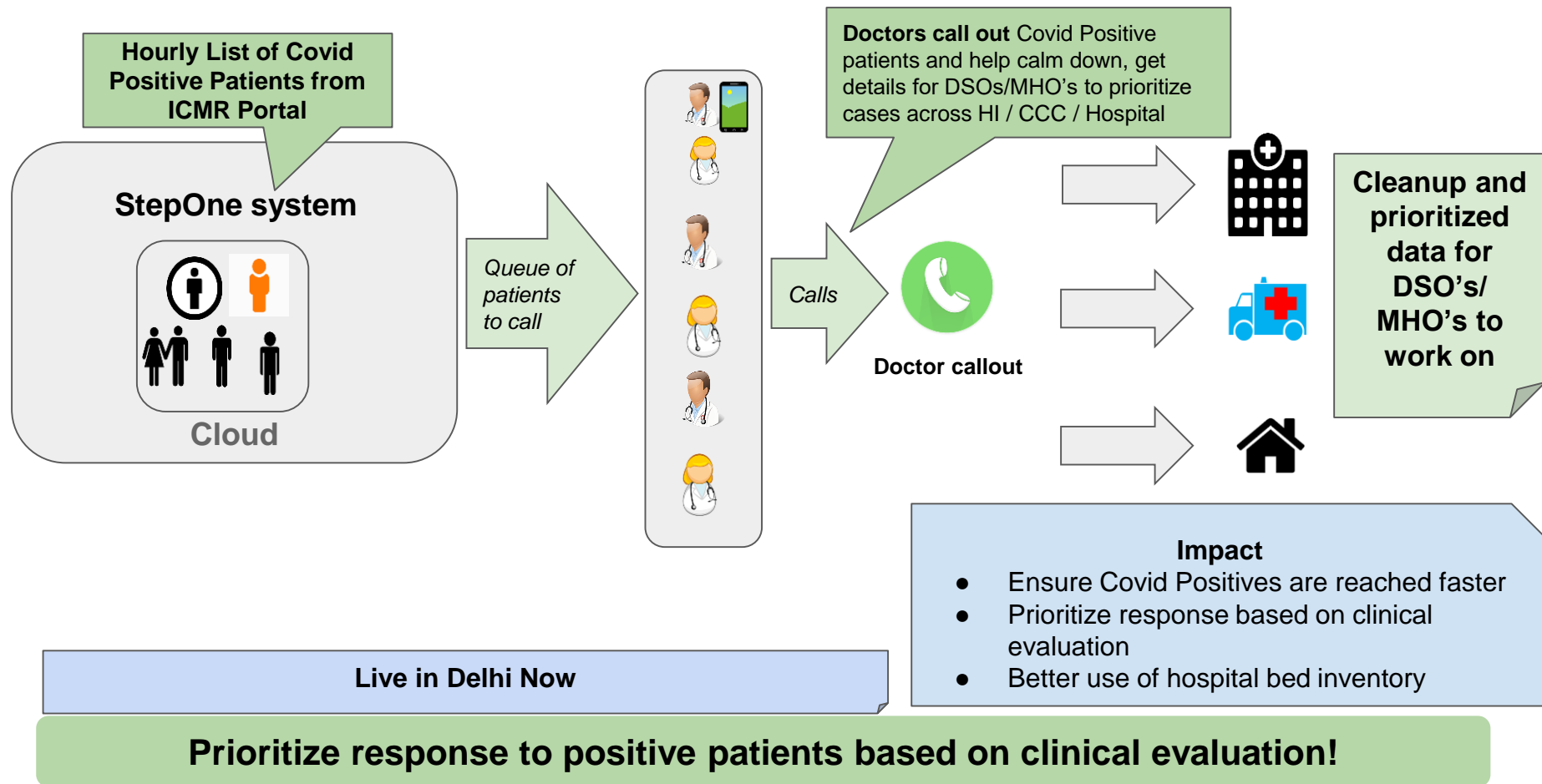
## Impact

- Prevent contacts by making people #StayAtHome
- Identify and test high risk cases faster

Live in Delhi - 1800 111 747

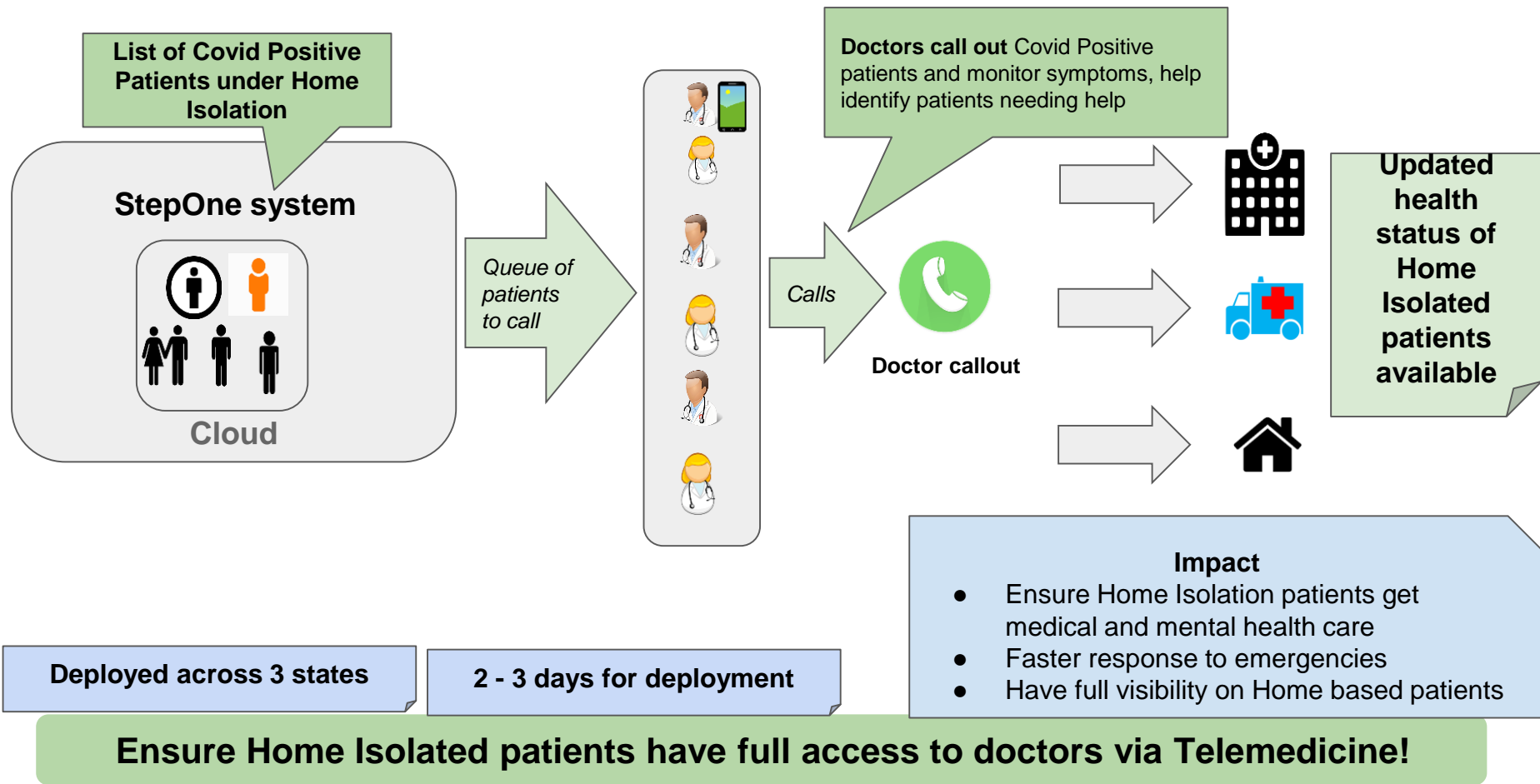
**Proven, Robust and scalable Telemedicine solution to prevent Covid spread!**

# Covid Positive Triage





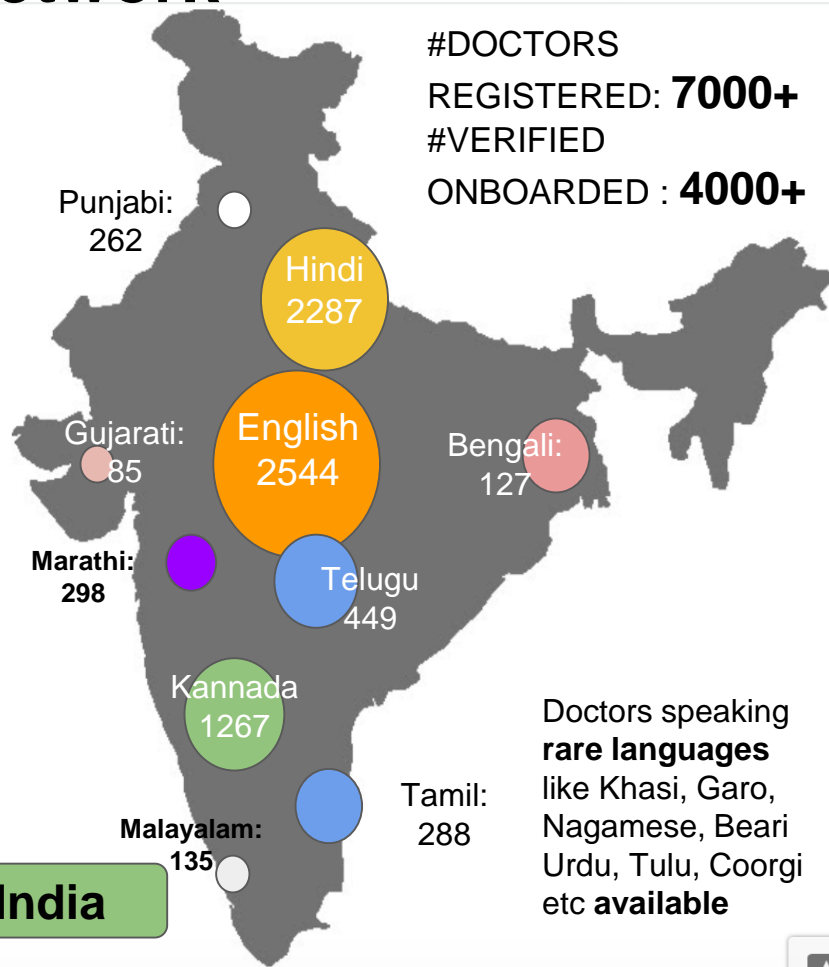
# Home Isolation Monitoring



# Multilingual Volunteer Doctor Network

| Language  | No. of Doctors | % Doctors |
|-----------|----------------|-----------|
| English   | 2544           | 94%       |
| Hindi     | 2287           | 85%       |
| Kannada   | 1267           | 47%       |
| Telugu    | 449            | 17%       |
| Marathi   | 298            | 11%       |
| Tamil     | 288            | 11%       |
| Malayalam | 135            | 5%        |
| Bengali   | 127            | 5%        |

Doctors speaking **33 languages/dialects** in India



# Supported by Professional associations



The Association of Otolaryngologists of India