



# Chikungunya: Experiences from the current response to the outbreak in the Americas

**Thais H. dos Santos**

Regional Advisor, Surveillance and Control of  
Arboviral Diseases

**3 May 2023**

**OPS**

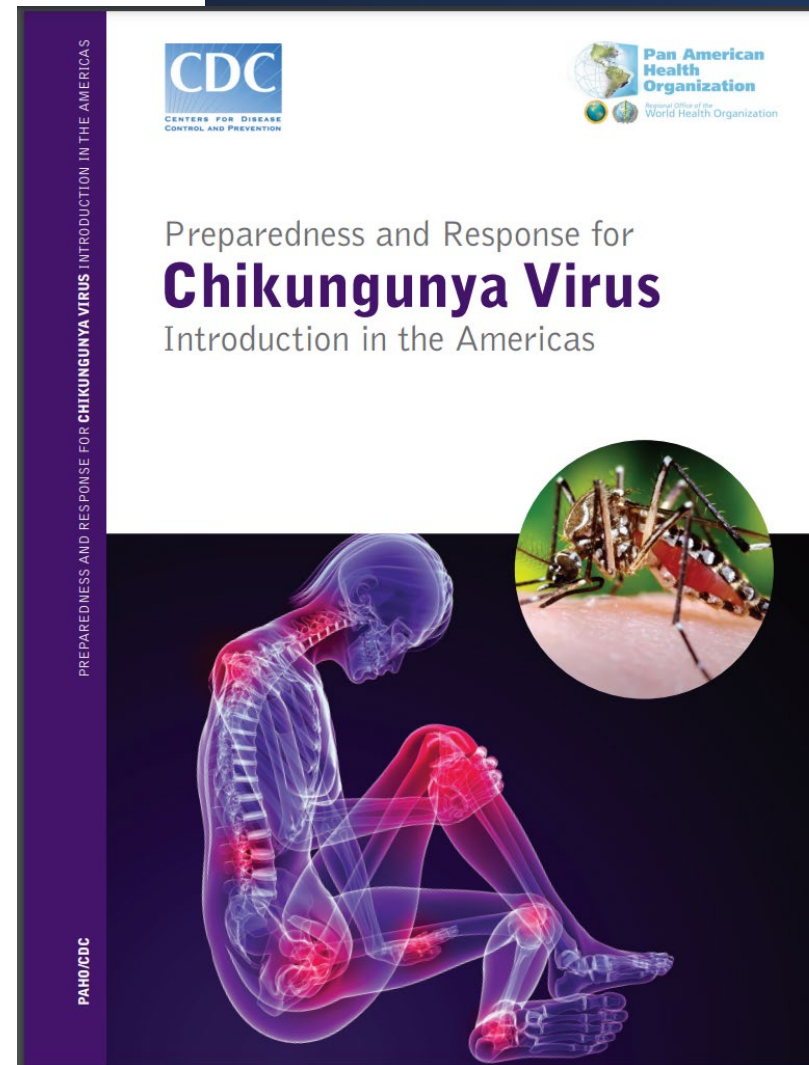


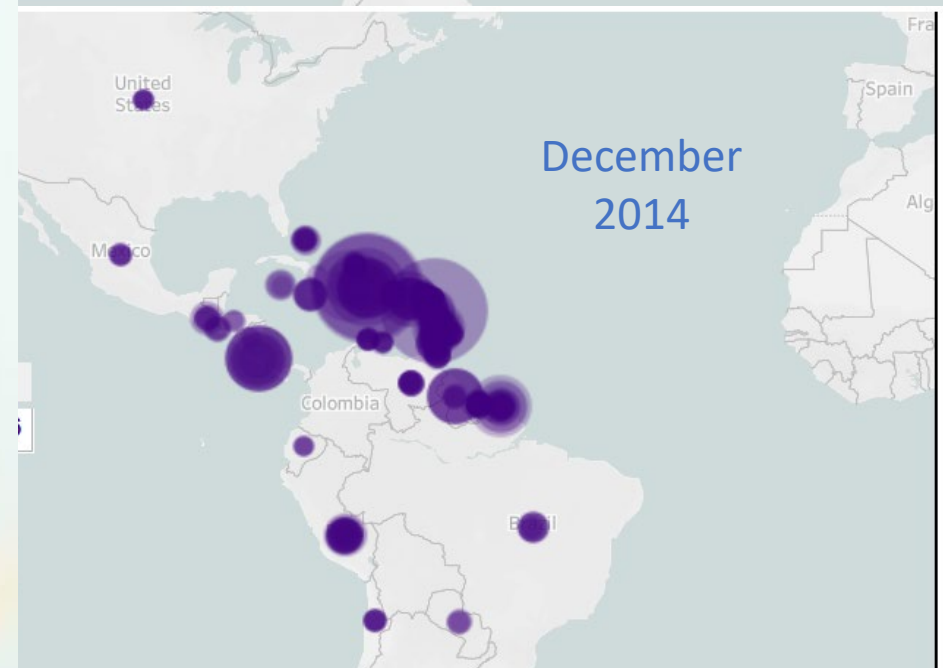
Organización  
Panamericana  
de la Salud



Organización  
Mundial de la Salud  
OFICINA REGIONAL PARA LAS Américas

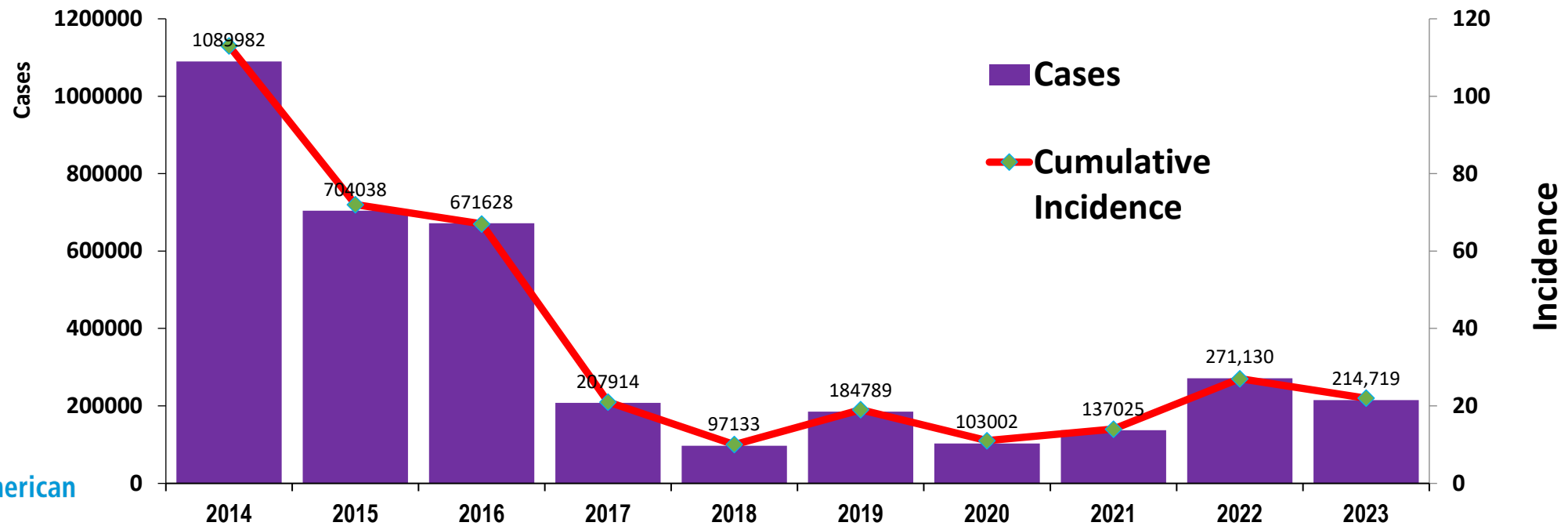
# Preparing for a Chikungunya Introduction



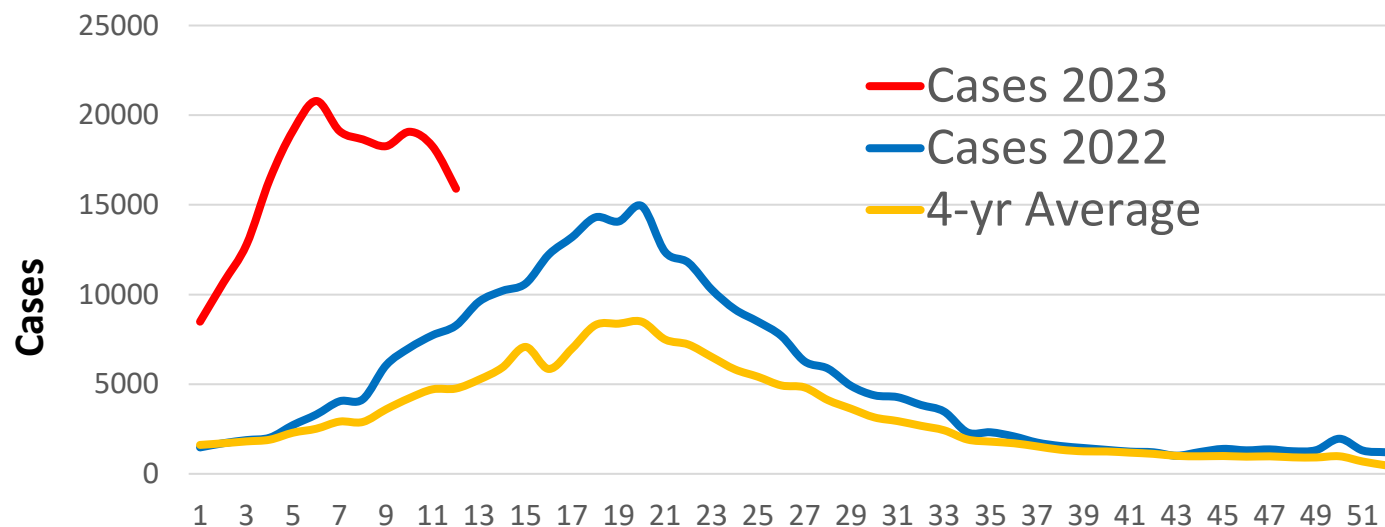


# Cases, Cumulative Incidence\* and Deaths from Chikungunya in the Americas, 2023 EW 16

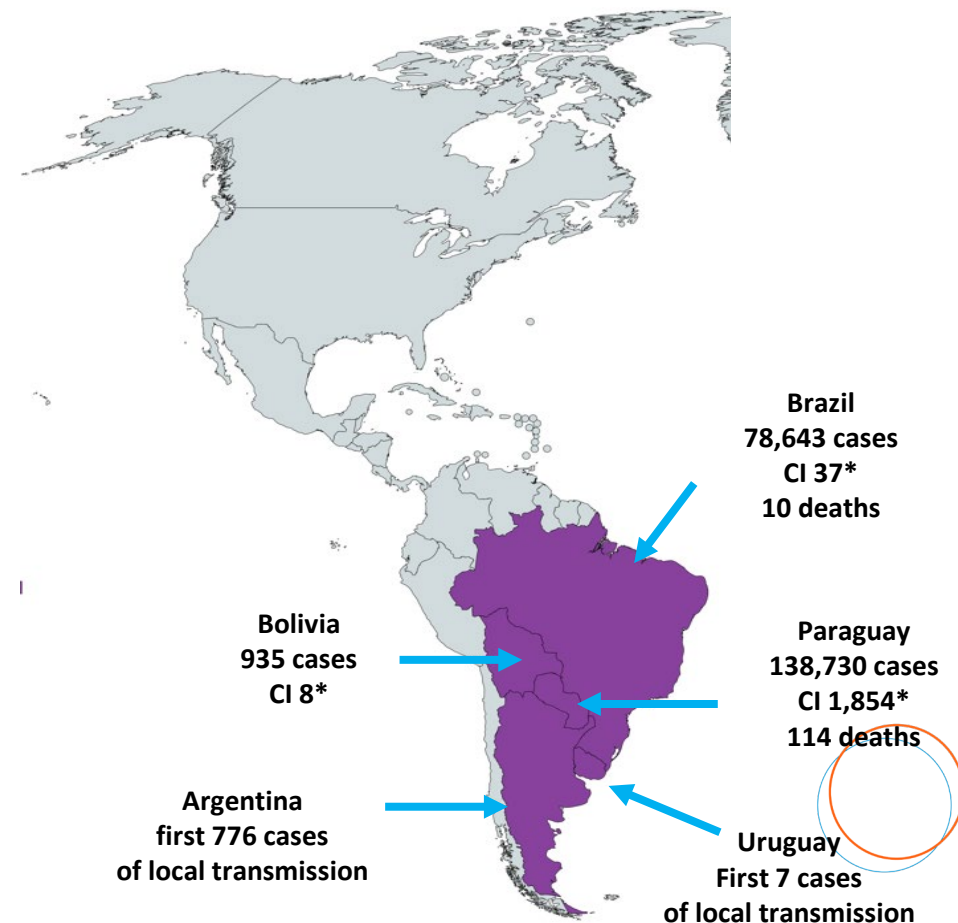
Americas	Total cases	Cum. incidence	Confirmed	Deaths/CFR
Year 2023	214,719	22	94,640 (44%)	124/0.058%



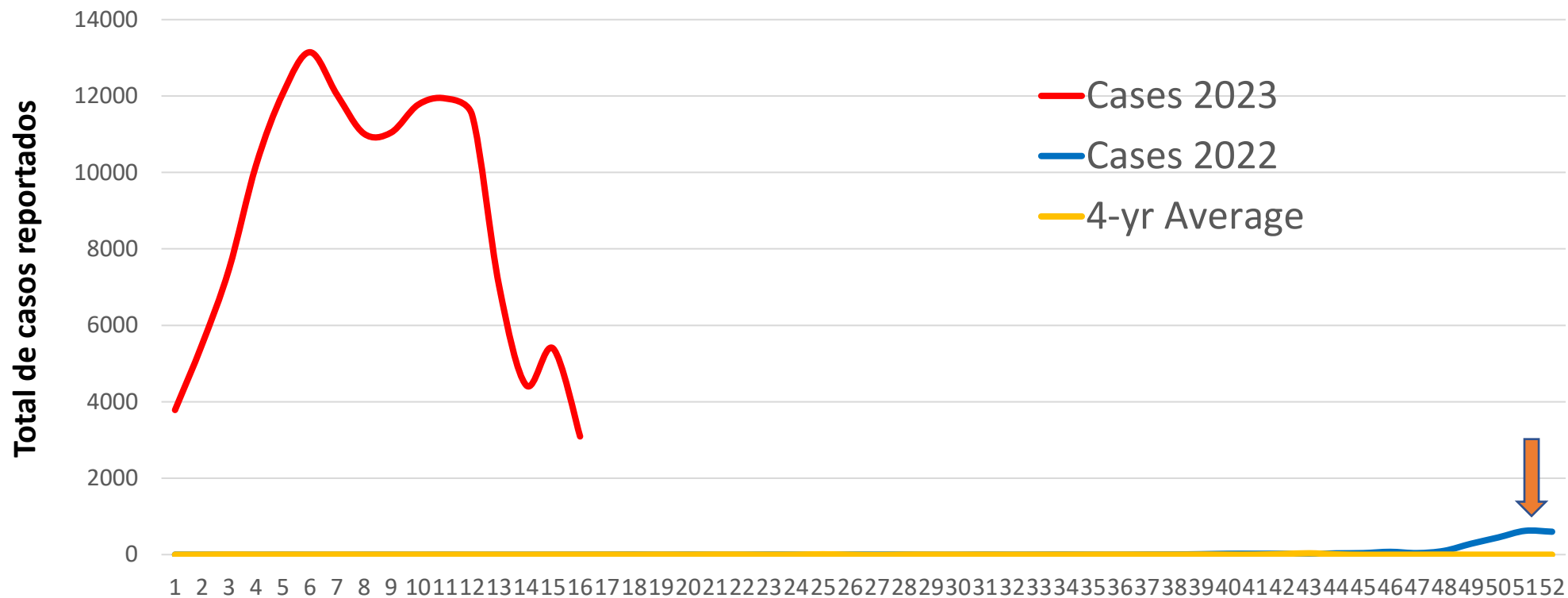
# Weekly Chikungunya Cases, 2022-2023 and Four-year Average in the Region of the Americas



2023 saw an increase of **128%** (214,719 cases) with respect to the same week of 2022 (94,250 cases) and **264%** with respect to the average of previous 4 years (58,941 cases)



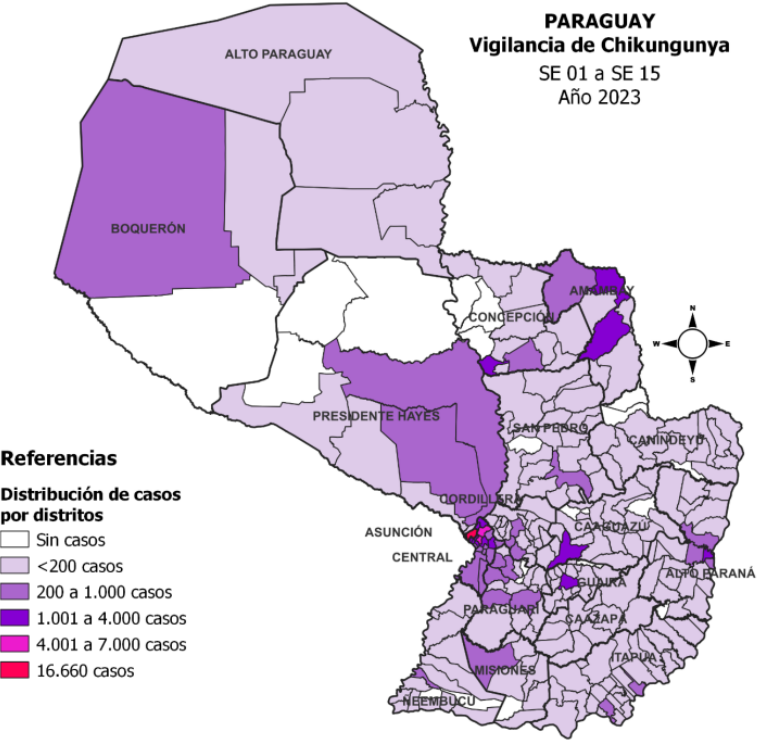
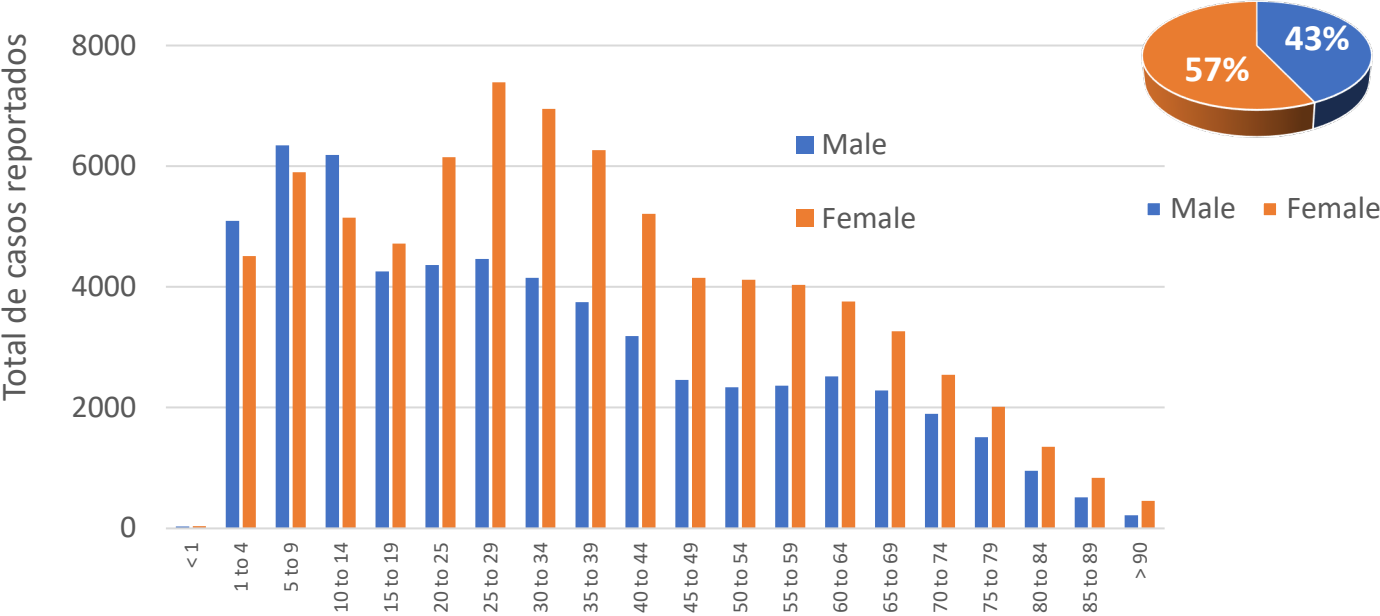
# Weekly Chikungunya Cases, 2022-2023 EW16 and Four-year Average, Paraguay



2023 saw an increase of 9,248 times (138,730 cases) with respect to the same week in 2022 (15 cases) and 6,031 times with respect to 4-year average (23 cases) in Paraguay

# Cases by Location, Age Group and Sex Paraguay 2023 EW 15

Cases by age group and sex



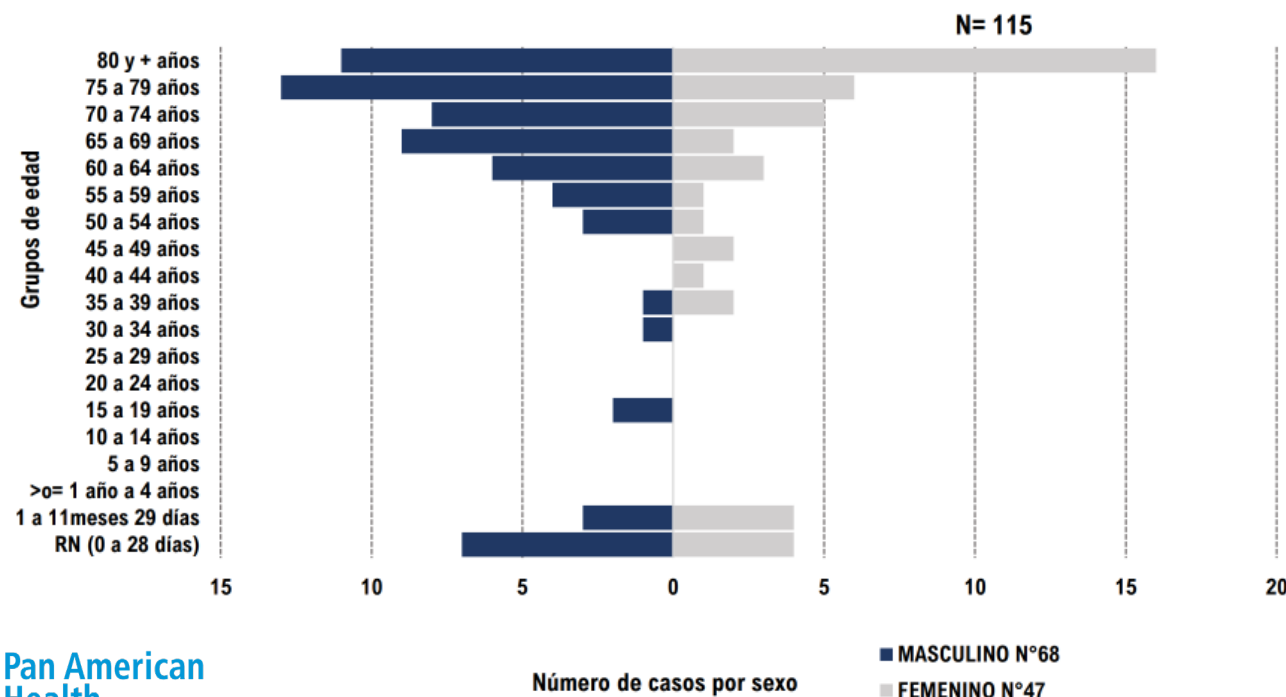


# Characterization of Deaths, Paraguay



115 deaths have been reported since EW40 2022 and EW15 2023

Fallecidos confirmados por Chikungunya según sexo y rango de edad.  
SE 40 2022 a SE 15 2023. Paraguay

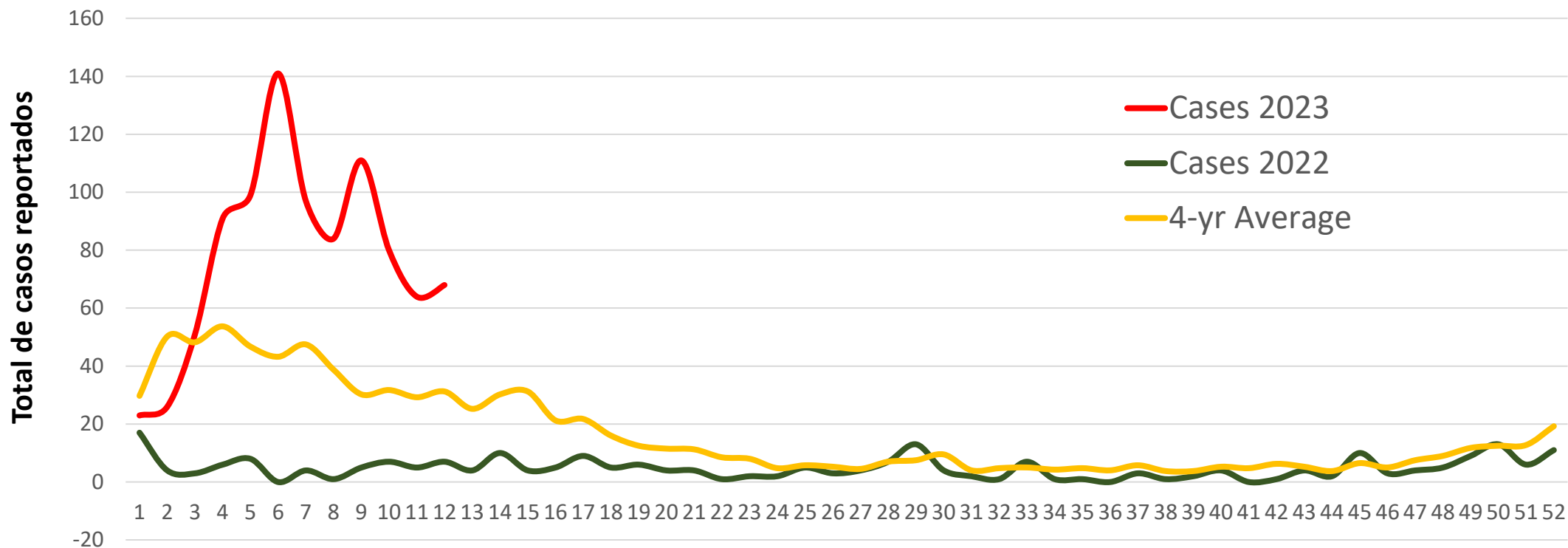


- The greatest number of deaths has been in males over 60 years of age
- 18 deaths reported in infants
- CFR is 0.16% - highest CFRs in those <1 yr and those >80 yrs

Año	Confirmados
Año 2022	1
Año 2023	114
<b>Total</b>	<b>115</b>

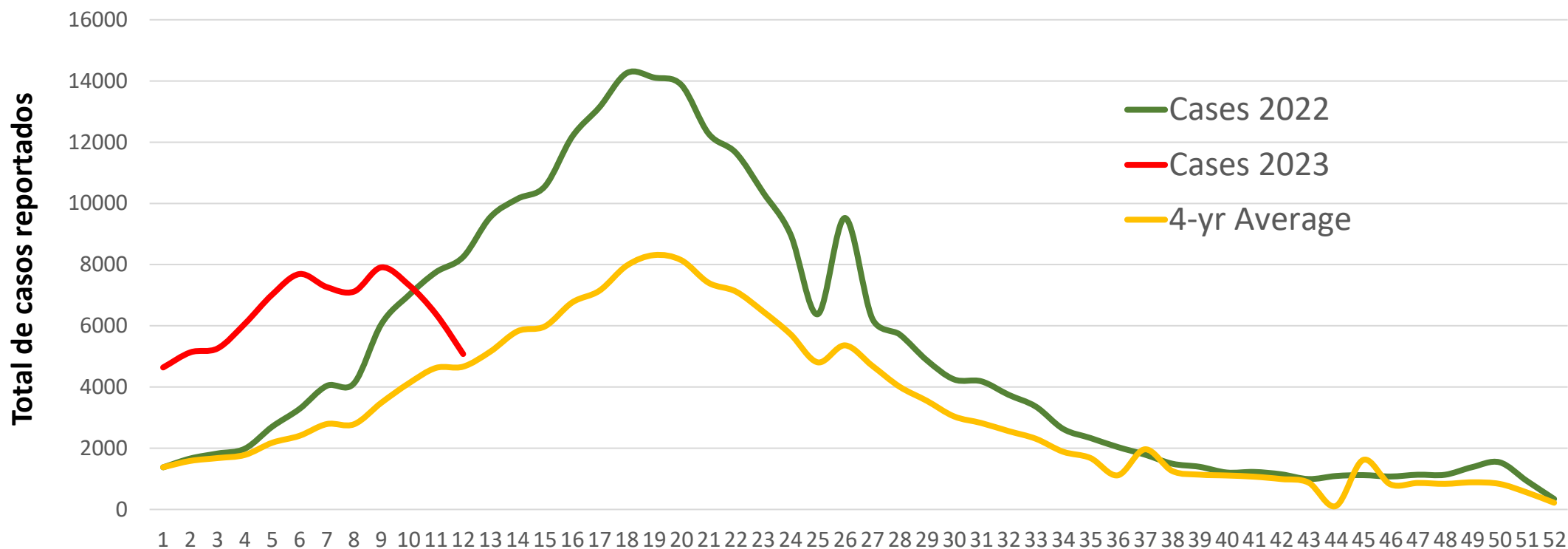


## Weekly Chikungunya Cases, 2022-2023 EW12 and Four-year Average, Bolivia



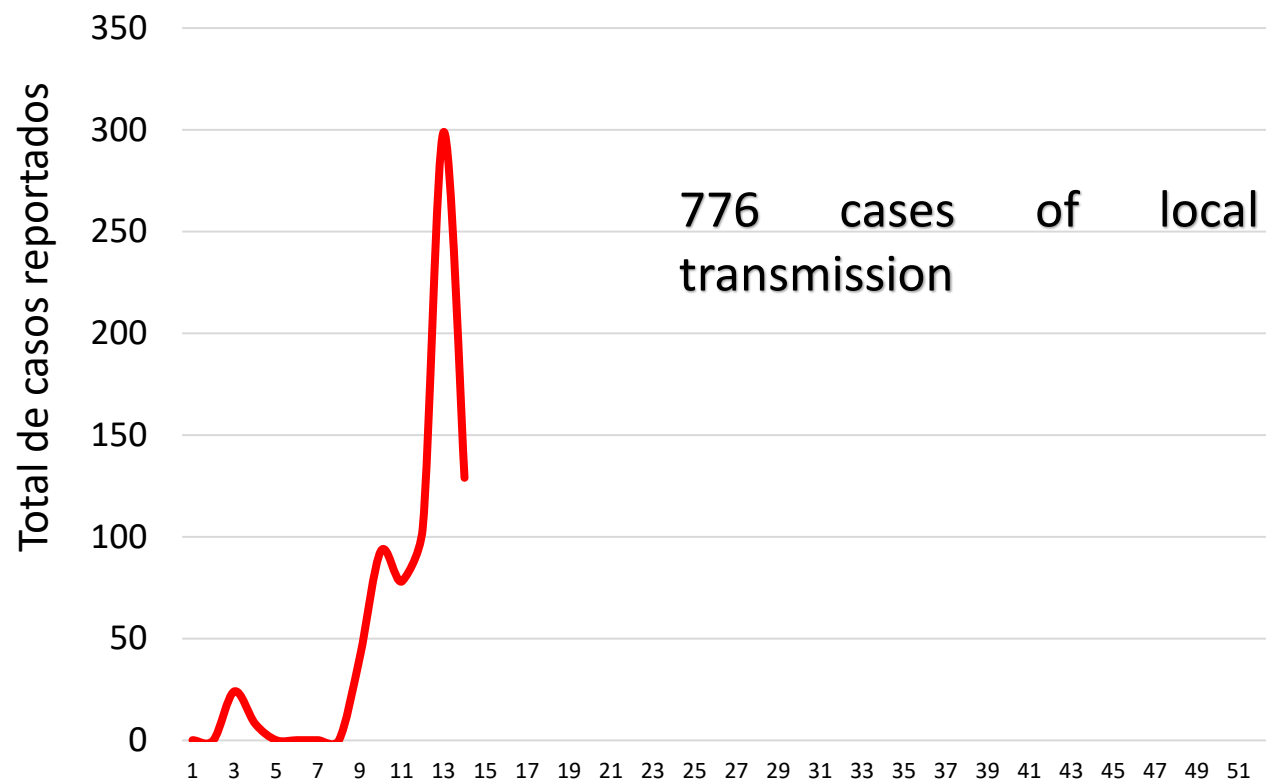
2023 saw an increase of **939%** (935 cases) with respect to the same week in 2022 (90 cases) and **94%** with respect to the 4-year average (481 cases)

## Weekly Chikungunya Cases, 2022-2023 EW13 and Four-year Average, Brasil

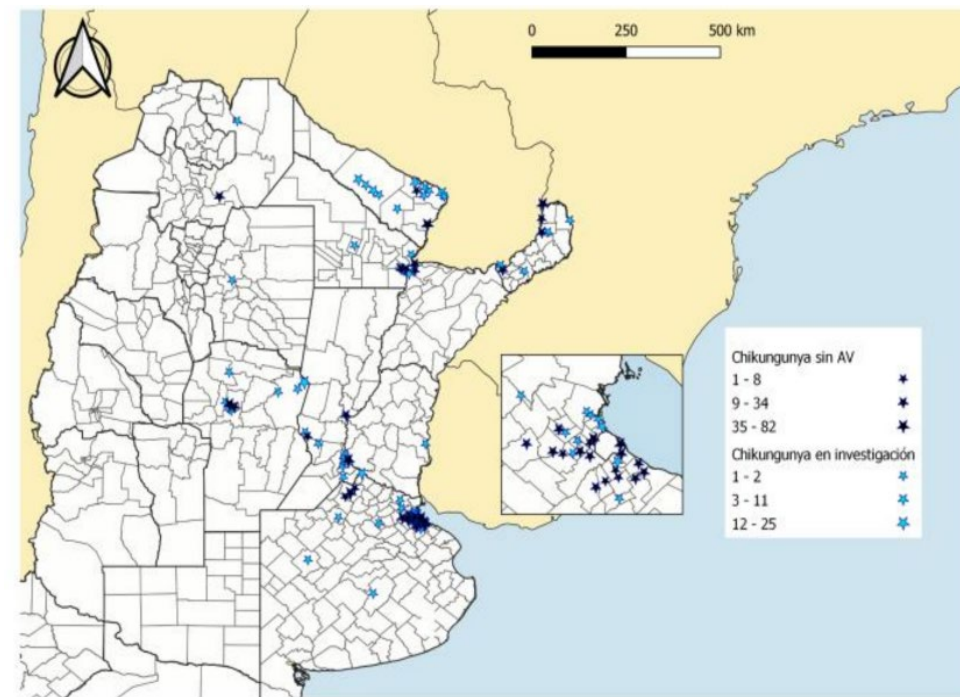


2023 saw an increase of 32% (78,643 cases) with respect to the same week in 2022 (59,562 cases) and 54% with respect with the 4-year average (38,650 casos)

# Weekly Chikungunya Cases, 2022-2023 EW15, Argentina



## Casos según lugar de residencia





# Support to Countries Technical Missions of Experts to countries



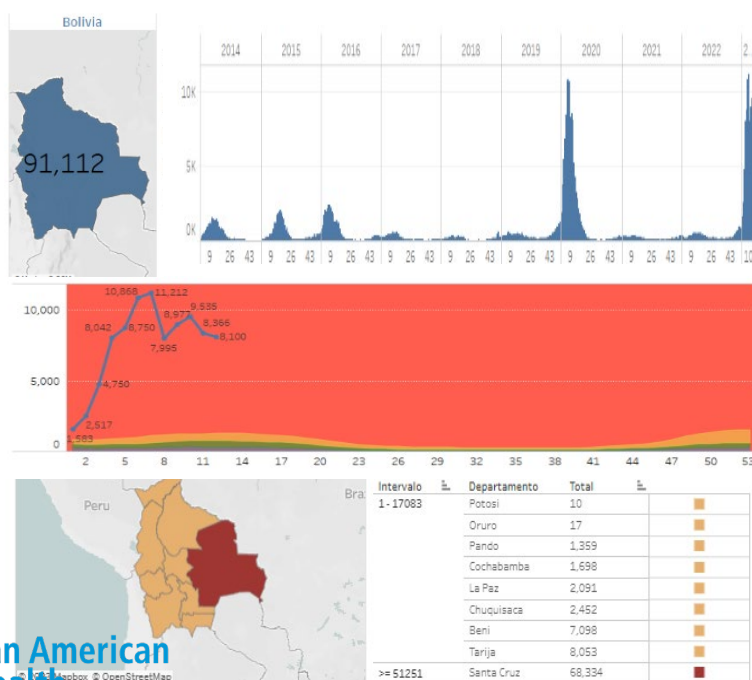
**7 technical missions**



# Support to Countries: Strengthening of Surveillance

- Development of Virtual Collaboration Spaces that operationalize collaborative surveillance and facilitate the communication, collaboration and technical cooperation
- Automates analysis and generation of visualizations to facilitate decision-making

Bolivia - Resumen ejecutivo de la situación de las arbovirosis



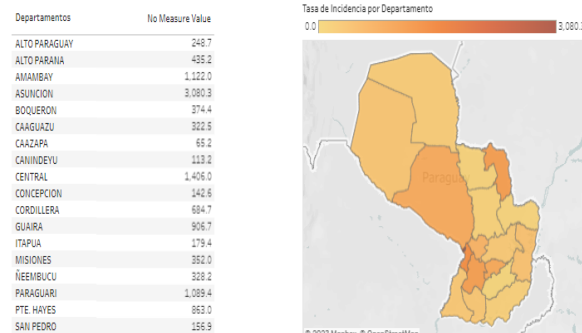
## SALA DE SITUACIÓN

## ARBOVIROSIS

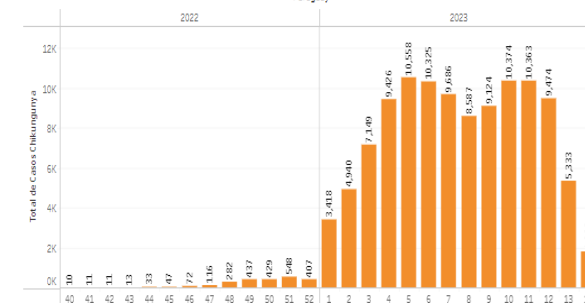
### SITUACIÓN EPIDEMIOLÓGICA

Datos preliminares actualizados para la Temporada: 2022/SE40 - 2023/SE14

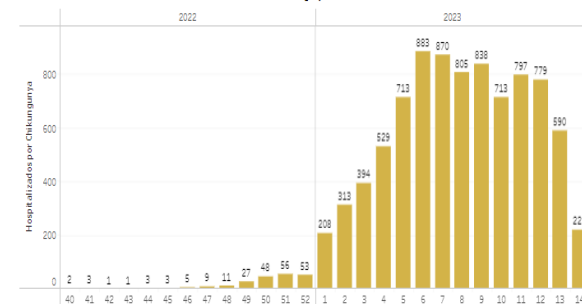
### TASA DE INCIDENCIA DE CASOS CONFIRMADOS CHIKUNGUNYA



Total de Casos de Chikungunya por semana epidemiológica Paraguay



Total de Personas Hospitalizadas por Chikungunya por semana epidemiológica Paraguay





## Support to Countries: Integrated Vector Management

---

Technical document for the implementation  
of interventions based on generic operational  
scenarios for *Aedes aegypti* control



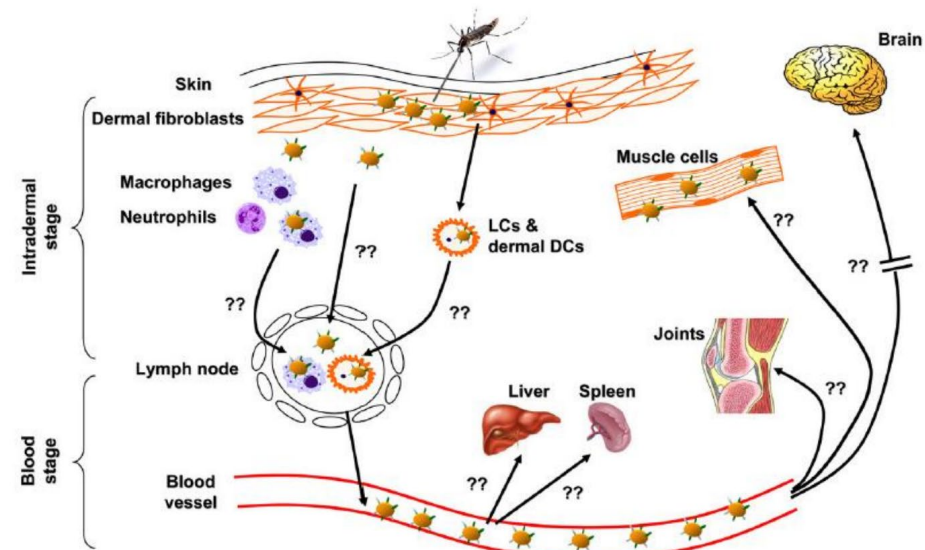
# Support to Countries Training on Clinical Management

## Curso clínico de chikunguña

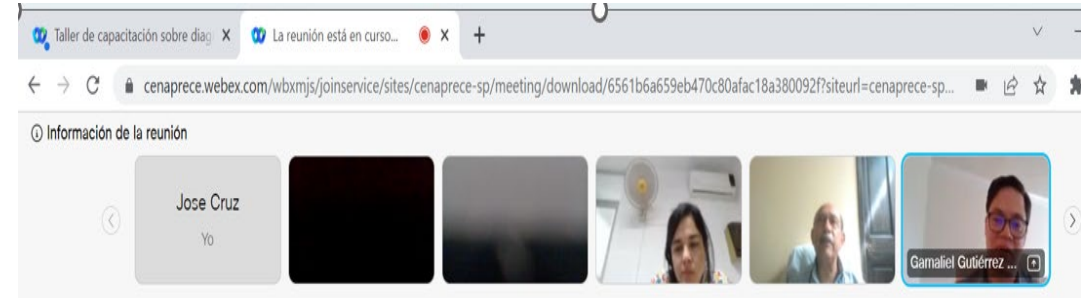
### Módulo 2: Patogénesis y su relación las manifestaciones clínicas

#### ▀ Módulo 2: Patogénesis y su relación con las manifestaciones clínicas

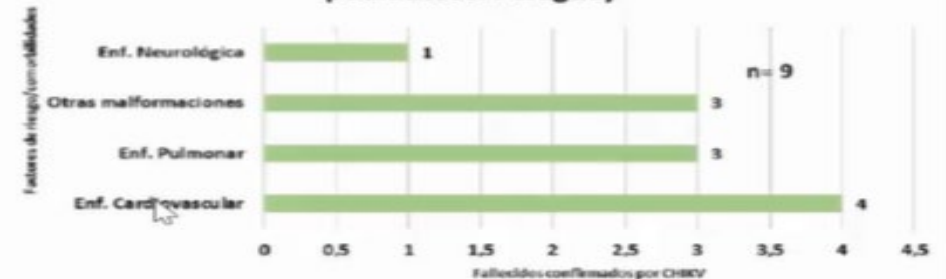
¿Cómo se produce la infección por el CHIKV? ¿Cuáles son los órganos afectados? ¿Por qué en algunos casos las manifestaciones clínicas de esta enfermedad persisten por semanas o meses? El módulo 2 responde a estas y otras preguntas que permitirán explicar de una manera sencilla la relación de la patogénesis de la enfermedad y sus manifestaciones clínicas.



Y.-W. Kam et al. / Microbes and Infection 11 (2009) 1186e1196



### Factores de riesgo/comorbilidades en fallecidos pediátricos. Paraguay



9/17 pacientes presentaron factores de riesgo/comorbilidades.

Virtual course on Dengue Clinical Management

Spanish: <https://bit.ly/CVOPSDengue>

English: <https://bit.ly/PAHOVCDengue>

Virtual course on CHIK COMING SOON!



# Considerations

- 2023 has presented increased arboviral circulation in many countries of the Americas
- Several countries in the Region are experiencing important increases in chikungunya transmission with an increase in deaths from chikungunya also observed
  - Broadening of seasonality
  - Expansion of circulation to new areas
- Is the increased transmission in the Southern hemisphere advance notice for northern hemisphere summer?
- New tools in technical cooperation have demonstrated success in monitoring epidemics and mitigating the impact



Thank you  
Gracias  
Obrigada  
Merci

