

# Coronavirus disease 2019 (COVID-19)

## Papua New Guinea Situation Report 18



25 April 2020

*This Health Situation Report on coronavirus disease 2019 (COVID-19) is issued by the PNG National Department of Health (NDoH) **ONCE a WEEK**. This Report is not comprehensive and covers information that we have as of reporting date.*

### HIGHLIGHTS

- ❑ Papua New Guinea has **eight cases of COVID-19**, to date.
- ❑ On 22 April, Prime Minister Hon. James Marape announced the 8<sup>th</sup> case in PNG: 45-year old female in Easter Highlands Province. She visited Asaro Health Centre on 12 April and was immediately admitted at the health center. She was managed for one week and improved. On 17 April her samples were collected and sent to PNG Institute of Medical Research in Goroka. Her test returned positive four days later. For quality assurance and best practice, the second test for this patient was taken, pending result. Currently, the health center is locked down for disinfection and the staff is home-quarantined and kept under surveillance. Meanwhile, the Rapid Response Teams initiated contact tracing.
- ❑ On 22 April, following the confirmation of the 8th case, the SOE Controller David Manning reiterated following directives to ensure life continues in the “new normal”:
  - Universities and tertiary education resume on 27 April, Monday;
  - Primary and secondary schools resume on 4 May 2020. All COVID-19 health protocols are to be strictly observed;
  - All public transportations are still prohibited. Taxis may operate if there are not more than 3 passengers and in areas where there is a curfew such as the NCD they are not to operate at night. Strict COVID-19 health protocols will have to be followed;
  - All domestic air travel to resume but only to provinces where there are no confirmed cases of COVID-19;
  - All ships are allowed to berth and unload cargoes only. No passenger is allowed to disembark, and no-one is allowed to board. At all times PPEs must be worn by both ship crew and port workers.
- ❑ On 24 April, SOE Controller approved Hilton Hotel to accommodate approximately 21 HEVILIFT employees returning to Port Moresby on 25 April aboard HEVILIFT flight HL9213 arriving 1630hrs
- ❑ COVID Hotline **1800200** continues to be operational, receiving about 2,000 calls per day from all provinces of the country.

### GLOBAL SITUATION IN NUMBERS

*The numbers are based on WHO Situation Report as of 24 April 2020.*

**Globally: 2 626 321 confirmed cases  
181 938 deaths**

**Western Pacific Region:  
139 782 confirmed cases  
5 869 deaths**

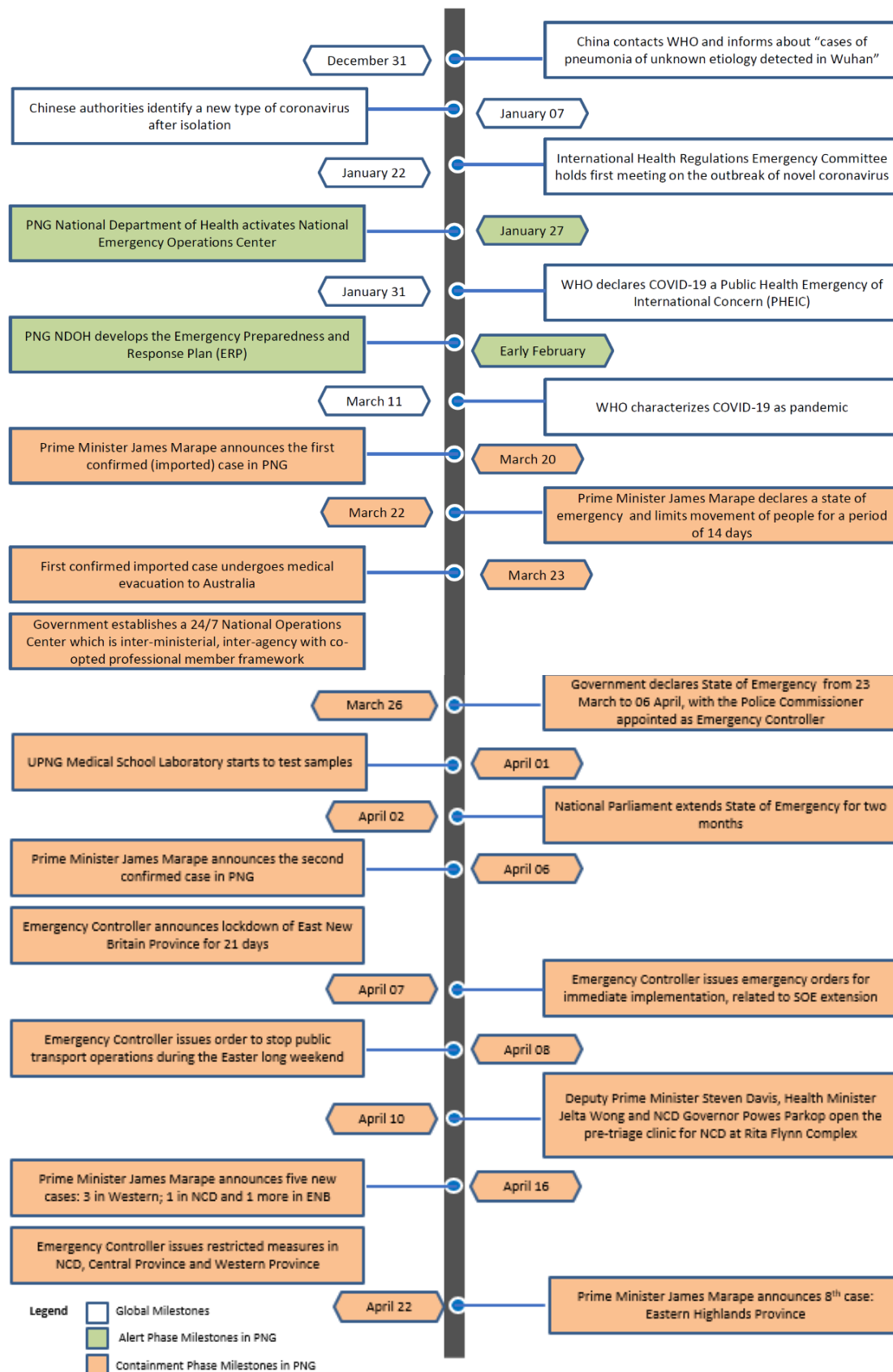
**Countries/territories/areas affected: 213**

**Papua New Guinea: 8 confirmed cases**

**East New Britain: 2 confirmed cases  
Morobe: 1 confirmed case (repatriated)  
NCD: 1 confirmed case  
Western Province: 3 confirmed case  
Eastern Highlands: 1 confirmed (new)**

## CHRONOLOGY OF EVENTS

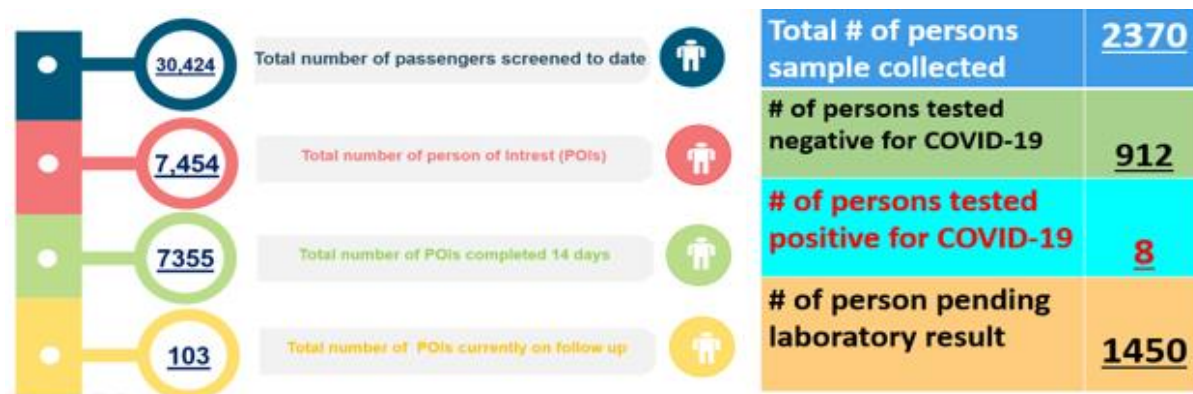
Below is a timeline highlighting important global events and milestones in PNG during the various phases of response to COVID-19.



## SURVEILLANCE AND POINTS OF ENTRY

- ❑ As of 24 April, a total of **30,424** inbound passengers were screened at the Jacksons International Airport and seaport in Port Moresby. A total of **7,454** were identified as 'persons of interest' who are being monitored regularly by the Surveillance Team.
- ❑ Of the **7,454** persons of interest, 7,355 (99%) have completed the 14-day follow-up period, while 103 are still on active monitoring. Majority of those monitored are in Port Moresby.
- ❑ There have been **2370** persons investigated by the Rapid Response Team: 8 tested positive for COVID-19, 912 tested negative while 1450 samples are still pending result.
- ❑ As of 24 April, the updates from the surveillance, points of entry and laboratory clusters are summarized below.

### PNG Surveillance: Points of Entry Update (airport and seaports as of 24 April 2020)



- ❑ On 22 April, Prime Minister Hon. James Marape announced the 8th case in PNG: 45-year old female in Easter Highlands Province. The case is isolated. The district hospital is locked down and disinfected. The contact tracing is in progress.
- ❑ A total 725 contacts identified so far for the index case in NCD. The contacts are work colleagues from NOC, Moratua house staffs, Customs, Family members and other contacts. The samples were collected from all the contacts. All the contacts have been quarantined since 16 April.
- ❑ The 2<sup>nd</sup> case in East New Britain has been isolated 17 April. A total of 152 samples collected so far since the first confirmed case. All the contacts have been quarantined. Active case search is being implemented. Addressing stigma and discrimination in the community, but still need more work in all communities.
- ❑ A team from the national level deployed to Western Province to assist contact tracing and other preventative measures following the confirmation of the 3 cases in the Province. A total of 246 contacts sample collected so far. Additionally, 293 persons sample collected for targeted border surveillance.
- ❑ The COVID-19 Hotline **1800200** receives an average of 2,000 calls per day from all provinces of the country. To date, there have been more than 35,000 calls made through the hotline.

## Laboratory Tests performed on samples from the provinces and the outcomes

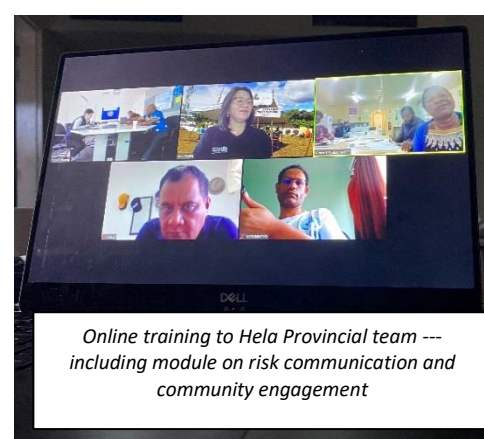
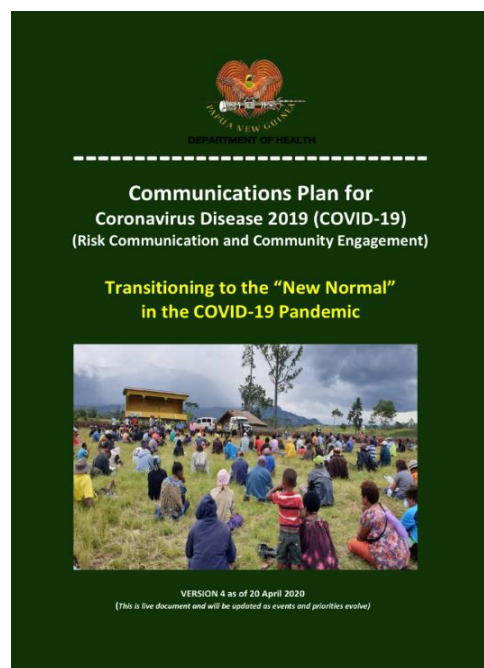
Province	Positive	Negative	Total test
NCD	1	813	814
West Sepik	0	208	208
East New Britain	2	164	166
Western Province	3	126	129
East Sepik	0	67	67
Morobe	1	24	25
Eastern Highlands	1	11	12
West New Britain	0	7	7
Western Highlands	0	6	6
Gulf	0	3	3
New Ireland	0	3	3
ARoB	0	2	2
Jiwaka	0	2	2
Milne Bay	0	2	2
Oro	0	2	2
Hela	0	3	3
Central	0	1	1
Manus	0	1	1
Southern Highlands	0	1	1
Simbu	0	1	1
Total	8	1447	1455

## CLINICAL MANAGEMENT and INFECTION PREVENTION AND CONTROL

- ❑ On 9 April, NDoH with the technical support of WHO trained 52 trainers on surveillance, clinical management and infection prevention and control. The trainers are from National Department of Health, Port Moresby General Hospital, Central Provincial and National Capital District Health Authorities and partner NGOs such as World Vision.
- ❑ On 23 April, NDoH with the technical support of WHO conducted a 'Virtual Training on COVID-19 Response' for **five trainers** in Hela Provincial Health Authority. The virtual training covered surveillance, clinical management and infection prevention and control, and risk communication. The logistic support, including the training venue and internet facilities were provided by Oil Search Foundation office based in Hela. These trainers will train the health workers responsible for respective technical area in the province. Similar virtual trainings will be conducted for the provinces in the coming days.
- ❑ All provinces are ramping up the establishment of pre-triaging areas and isolation facilities. *[For details: Refer Updates from the Provinces Section]*
- ❑ Based on the PNG Health Service Profile, there are 741 health facilities with 5,400 hospital beds, more than 50 Intensive Care Unit (ICU) beds and 9147 health workers (medical doctors, Health Extension Officers, nurses and CHWs). Most provinces do not have quarantine facilities nor isolation wards. The number of functional ICU facilities is inadequate.
- ❑ PPEs for isolation wards across the country is being rolled out. However, **the issue of PPE supplies for the nation remains to be a concern**. The call for assistance from business houses, corporate entities, and our stakeholders to support still exists.

## COMMUNICATION AND SOCIAL MOBILIZATION

- ❑ The 4<sup>th</sup> edition of the Communications Plan for COVID-19 (covering both risk communication and community engagement) has been circulated to all provinces, partners and development agencies.
- ❑ The Plan has a **MESSAGE BANK** with key messages for various sectors and audiences. As the country transitions to “new normal”, the message bank also includes other social issues beyond health, such as human rights, protection, prevention of violence against women and children.
- ❑ The Communications Plan is a product of collective efforts from all the organizations led by NDOH, with support from WHO, UNICEF and partners under Health, Protection, WASH and Education clusters.
- ❑ A full information package on the COVID-19 prevention and control as a “new normal” in the time of pandemic is being prepared by NDOH, with support from WHO.
- ❑ Awareness and community engagement activities continue using multiple platforms (radio, TV, newspapers, social media and community activities with distancing measures), both at the national, provincial and district levels. Key messages developed by NDOH-WHO continue to focus on prevention practices, physical distancing, dealing with fear, stigma and discrimination, and protection of health workers.
- ❑ Additional messages on other health programs such as routine immunization, malaria, TB and HIV/AIDS in the context of COVID-19 have also been issued.
- ❑ Training on communication and social mobilization is part of the response training package being rolled out to provinces using online platform. Hela Province received online training on 23 April.
- ❑ Daily TV and radio messages on COVID-19 through a program Hour of Hope is simultaneously telecast at the national level and in all provinces. WHO works with the Council of Churches and uses a religious framework for messaging (to promote behaviour change, manage fear, deal with stigma and discrimination). The daily telecast is in lieu of the church services that were cancelled as part of SOE.



## LOGISTICS and SUPPLIES

- ☐ Personal protective equipment (PPE) and other supplies have been dispatched to the provinces. UNICEF and WHO providing technical support to the NEOC and in providing coordination for PPE procurement and distribution to frontline workers nationally.
- ☐ As of 23 April, UTMS (200 swabs with media for each province) have been dispatched for Simbu, Jiwaka, Western Highlands and Enga.
- ☐ Chinese government donated 1000 disposable clothing and 500 gloves (awaiting to be released by TNT).
- ☐ WHO donated 8 PCR Reagent Enzyme kits (500 reactions each) for IMR (in transit to PNG).
- ☐ DFAT donated 1200 UTMS (in transit to PNG).
- ☐ It is expected to receive 90,000 surgical masks and 7200 protective suits donated by Jack Ma through Pacific Humanitarian Pathway (awaiting AWB/ETA).
- ☐ UNICEF has procured and are ready for distribution throughout all provinces 500 WASH and Dignity Kits; while 2,380 litres of hand wash and hand sanitizer have been ordered -- delivery is awaited soon.
- ☐ UNICEF ordered USD600k worth of all types of PPE (in transit to PNG).
- ☐ UNICEF is exploring to supply 15,000 GenXpert cartridges through their supply division, awaiting arrival date due to issues with high demand and prolonged lead time.
- ☐ 55 tents for pre-triage screening has been procured and distributed to the Provinces.



## Provincial Stocks distribution completed as of 18 April 2020

	Province	N95 Masks pieces	Gloves pieces	Gowns pieces	Biohazard Bags	Surgical caps pieces	Goggles
1	PNGDF (Border)	360	20,000	120 Aprons: 200	1000		
2	Surge Team (1 <sup>st</sup> Deployment)	200	200	0	0	0	200
		200	200	70	50	100	
3	Airport Cluster	9,600	9000	180	100	200	
3	PNGDF/RCPNG (Western)	450	10,000	30	0	0	
4	ENB RRT	40	400	60	0	100	
5	ENB (2 <sup>nd</sup> Batch)	180	14000	120	25	1000	
6	Central	190	24000	210	25	100	
7	Western	40	25,000	180	25	200	
8	Oro	140	9,000	210	25	100	
9	Morobe	280	34,000	210	25	100	
10	East Sepik	60	15,000	180	25	200	
11	West Sepik	60	15,000	180	25	200	
12	Western Highlands	100	11,000	150	25	100	
13	Southern Highlands	300	29,000	180	25	100	
14	Hela	280	36,000	180	25	100	
15	West New Britain	140	15,000	180	25	100	
16	East New Britain	280	32,000	150	25	100	
17	ARoB	300	40,000	180	25	100	
18	Manus	190	19,000	210	25	100	
19	New Ireland	280	9,000	210	25	200	
20	CPHL	60	4,000	120	2	0	
21	IMR POM	40	2,000	30	0	0	
22	Milne Bay	180	9,000	180	25	100	
23	Gulf	180	15,000	180	25	100	
24	EHP	190	18,000	150	25	200	
23	Enga*	180	14,000	150	25	200	
24	Jiwaka*	180	13,000	150	25	200	
25	Simbu	180	6,000	180	25	200	
26	Emergency Kits (NOC)	290	0	0	0	0	
27	PMGH	180	12000	60	25	200	0
28	NAC	1000	6000	0	0	0	
29	PNG Ports	1000	6000	0	0	0	
30	Police	1000	6000	0	0	0	
31	PNGDF	1000	6000	0	0	0	
32	NOC 16.04.20	2000	2000	0	0	0	
33	Laloki Hospital	150	9000	0	25	100	
34	Kiunga (Surge-18.04.20)	1000	0	0	0	0	0
35	NCD PHA (Rita Flynn)	0	0	0	0	200	0

## UTM Distribution List and Dispatch status (as pf 21 April 2020)

SN	Province/Hospital/ Facility	Quantity First batch	Quantity Second Batch	Total in provinces	Comments
1	CPHL	Received 01.04.2020 4200	Received 09.04.2020 4600	9900	Total received from <b>9000 DFAT and 900 WHO</b>
2	Hela	50	200	250	
3	Enga	40	200	240	
4	SHP	40		40	
5	WHP	40	200	240	
6	JIWAKA	50	200	250	
7	Simbu	40	200	240	
8	EHP	40	200	240	
9	Morobe	60	200	260	
10	Madang	60	200	260	
11	East Sepik	200	200	400	
12	West Sepik	200	200	400	
13	Manus	40	200	240	
14	West New Britain	60	200	260	
15	East New Britain	400	1000	1400	
16	New Ireland	40	200	240	
17	AROB	200	200	400	
18	Milne Bay - Alotau	40	200	240	
19	Milne Bay- Kiriwina	20		20	
20	Oro – Popondetta	40	200	240	
21	Oro – Tufi	20		20	
22	NCD	60	200	260	
23	Gulf – Kerema	30		30	
24	Western – Daru	150	1200	1350	
25	Western – Kuinga	100	200	300	
26	NOC	50	160	210	
27	NCD (Rita Flynn)		300	300	
28	Remainder (stock on hand 24.04.2020 8am)		80		In country stock * Counts may change (awaiting updated info from the lab)



## UPDATE FROM THE PROVINCES

### NEW GUINEA ISLANDS REGION

#### *Autonomous Region of Bougainville*

- ❑ **Surveillance** mostly involved screening at Ports of Entry at the Buka Airport and Buka Wharves. Other POEs at Arawa and Buin are also being monitored by relevant agencies (Customs Immigration and Quarantine, NACs). A surveillance team comprising of designated doctors, Health Environmental Officers, Immigration has been the focal group in supervising POEs. The same group has also been attending to notified POIs in the community, meaning this group have been performing RRT and Surveillance duties at the same time. A dedicated RRT will be identified based on need. The Surveillance team initiated the monitoring of the implementation of ILI/SARI at the health centres.
- ❑ A **pre-triage (Cough Triage)** has been set up at Buka Hospital for the outpatients. All patients with cough are directed to the cough Triage for review/screening. A Cough Register has also been set up and all “coughs” are being registered with trends monitored regularly for signs of any unusual patterns in influenza-like illnesses. This pre-triage station is planned to be enhanced with more open setup, using tents depending on availability of facilities.
- ❑ The Laboratory officer is an IATA trained officer and has packed 2 samples, to date. The current Pathology labs at Buka Hospital and Arawa District Hospitals do not have bio safety cabinets although both hospitals do run Gene Xperts. Buka Hospital has identified a previously designated laboratory- container (but never used) near the Acute COVID-19 ward that can be used to hold the Gene Xpert machine for COVID-19 testing if Gene Xpert testing is implemented.
- ❑ The renovation of Buka Hospital Acute COVID-19 Ward will begin shortly and changes have been made with NDOH endorsements. This ward will cater for 4 beds, however, if there are more cases, bed settings will have to be adjusted to cater for more cases.
- ❑ The staff roster for the isolation ward at Buka Hospital is prepared in advance.
- ❑ Suhin Health Center is identified as an Isolation Point and it is currently undergoing renovations.

#### *East New Britain*

- ❑ The second case in East New Britain is a 37-year old male who was a contact of the first case in East New Britain.
- ❑ The second case became symptomatic around 16-17th March (sick at the same time as the first case) with fever and Muscle aches and was recovered. He reported the prior symptoms to the surveillance team during monitoring. A nasopharyngeal and oropharyngeal was collected on 8 April 2020 and the positive result was confirmed on 16 April 2020. The surveillance team is continuing to investigate and conduct contacts tracing.
- ❑ A total of 21 rural health surveillance officers are trained on COVID-19 response, including surveillance, ILI/SARI and IPC.



**East New Britain: Surveillance Training to Rural Health Staff**

- ❑ A total of 6 teams, consisting of 3 responders were assigned to collect samples from 3 from the locked down villages: Barovon, Ialakua and Rabuan.
- ❑ To date, a total of 566 samples collected (including 431 convenience sample) and sent to CPHL including 2 confirmed positive cases and their 2nd and 3rd samples.
- ❑ The training on clinical management and infection prevention and control is ongoing.
- ❑ A total of 32 Health facilities are open and operating.
- ❑ The PHA conducted awareness in Villages and worked closely with village councillors.
- ❑ Out of 6 locked down villages, 3 (Vunamurmur, Bitabaur and Vunatagia) were uplifted.



East New Britain: RRT Training to our 6 teams

### New Ireland

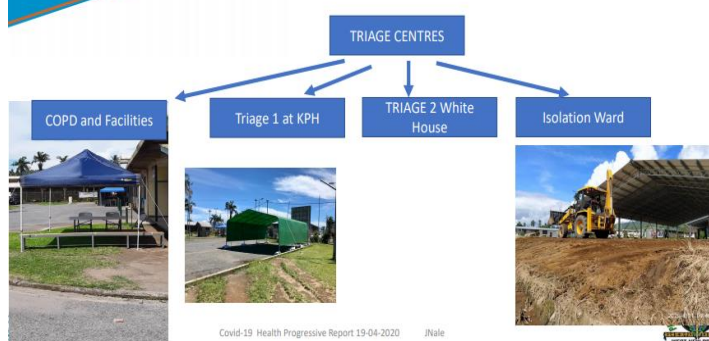
- ❑ New Ireland Provincial Health Authority Project Management Unit is working on a preliminary design and construction costing for a 6-bed COVID-19 Isolation Ward at the New Ireland Provincial Hospital.
- ❑ Temporary isolation will be set up at the Environmental Health Office, but this facility needs refurbishment. Costing has been submitted to the PEOC for review and funding deliberation.
- ❑ More trainings on communication and social mobilization have been conducted, such as those held in Pukpuk HC, Eratubu and kabanut Villages, Ligga, Kavieng Police Station, Lamassa HC, Nasko and Kumin.

### West New Britain

- ❑ The training on PPE and Clinical management of COVID-19 for 240 frontline health care workers were conducted in 4 batches from Navo, Ulamona, Baea, Hargy, Bialla, Lalopo and Silanga health facilities. The training for health care workers from Mosa, KUC, KPH, NBPOL, Valoka, Bola, Buvussi, Sasavoru and Silovuti are planned to be conducted in the coming days.
- ❑ The provincial COVID-19 response team developed a triaging pathway.
- ❑ The team enhanced the number of hand washing facilities at the hospital compound and also conducted an inspection of the hand washing facilities in the shopping areas.
- ❑ The business houses in the province donated IPC supplies, PPEs, construction materials, rations and printed advocacy materials.
- ❑ Moving forward, the province will focus on infrastructure development for isolation Ward (temporary and permanent), quarantine facilities and triaging areas at the hospital and health facilities



#### Triaging and Clinical Pathways





## Partner Support

### West New Britain



## The Isolation Ward – In Progress

### West New Britain



## Hand Washing & Physical Distancing

### West New Britain



## Communication

### West New Britain



## **MOMASE REGION**

### ***Madang***

- ☐ The Modilon Hospital has initiated to set up the work station for **screening (pre-triage)** using few materials as the initial set up for time being: Six canvas, 4 chairs, 10mm plywood to set up two working tables and other necessary materials. 24 hours running water is needed at this area for hand washing, good sink, proper rubbish, disposal materials and other needed materials.
- ☐ Modilon Hospital repurposed and refurbished Ward 5 and installed 4 beds to keep the suspected cases sample collection.
- ☐ The isolation ward will be improved to a self-contain unit with toilet, shower, cooking area, laundry and clothes line, hand washing basin, temporary fencing to prevent entering this area.
- ☐ The health care workers need training in surveillance, infection prevention and control and clinical management for COVID-19 Response.

### ***West Sepik***

- ☐ A one-day training for all officers who will be responsible for sample collection and packaging was done. In attendance were 40 officers from rural health facilities and SPH laboratory.
- ☐ The province has gone into active social mobilization reaching out to communities within the Vanimo Urban LLG.
- ☐ A training to shop owners was also conducted to emphasize on social distancing and handwashing. Shops that met the requirements for social distancing and handwashing facilities were identified and cleared for opening to customers.
- ☐ A total of 10 health workers are deployed at 4 POEs (along Indonesian border) in Vanimo Green District: 2 at Nyaukono, 2 at Schotchio, 4 at Kwek and 2 at Kembratoro.
- ☐ The Province used helicopter to deploy teams at POEs and deliver medical supplies and camping logistics at the POEs in Vanimo Green District.
- ☐ The teams at the POEs accessible by road were provided with vehicles and fuel.
- ☐ Vanimo Green district is also facilitated to explore possible isolation unit preparation for the estimated 80 prisoners who have been held in jails in Jayapura that will be released to PNG. Negotiations with the Ward member and Village Leaders commenced 14/4/20 to allow the use of Schotchio abandoned Jumbo Tract Limited (JTL) Logging Company camp facilities; and was agreed.
- ☐ In BWO LLG, all ground POE ground preparation is in order, except for Wutung which need deployment of the team. Quarantine facilities and staff camping is yet to be sorted, following which health team will be deployed.
- ☐ The POEs have been established and health teams been deployed in Walsa LLG, Green River LLG, Amanab LLG and Yafar 3.
- ☐ Security personnel are deployed at the POEs along with the health workers at Schotchio, RPC Bewani, Schotchio, Kwek, Kembratoro and Riverine.
- ☐ There are several challenges faced by Vanimo Green district regarding the deployment of security teams at the some of the POEs: no security personals at Nyaukono, the contract with the hire car for RPC Bewani has now, and Yafar 3 POE does not have security deployment arrangements.
- ☐ There are also some challenges with road accessibility and communication with the POEs. The SOE Command instructed AFL and Border Int/DD Investment to clear up the road access to those points.
- ☐ Sandaun Provincial Hospital has sorted out its **pre-triage** site for ILI screening. However, equipping it is bit slow to due unavailability of some of basic supplies in Vanimo.
- ☐ Baro CHP and Dapu UC have put up make shift ILI triage facility using make shift materials.

- ❑ To the extent possible, any cases identified will be isolated and managed at the local setting that each district has been entrusted the responsibility to identify and set up. The serious confirmed cases of COVID -19 needing life support will be referred to the hospital for management in isolation ward setup.
- ❑ Sites have been identified for isolation units in the 2 major health facilities within the Aitape Lumi District: Raihu District Hospital and Lumi Health Centre.
- ❑ The provincial social mobilization team have been active in working with the security personals to disseminate information to the communities accessible by road. The main objective if the advocacy campaign is to prepare the people if there is a confirmed positive case within the community to avoid fear and stigmatization.
- ❑ The team also conducted an advocacy for the CIS warders and inmates, police mobile squads and shops to orient them on COVID-19 and importance of social distancing.
- ❑ IEC materials worth of K2000.00 have been printed and awaiting collection upon payment.
- ❑ On-going risk communication Aitape Lumi District by conducting trainings and continued public awareness with emphasis on public health messaging at all levels: Personal hygiene (soap & water, Cough into flex elbow, do not touch your face); Social distancing (1.5 – 2 m in meetings, in public areas - bus stops, buses, shops, banks, ATMs, offices); when sick, stay at home and wear a mask when out in public.
- ❑ From the province, logistics has been supported through Health Functional Grants and Hospital Operations funds.
- ❑ PPEs received from NDOH are distributed.
- ❑ In Vanimo Green district, each team at the POEs are given a week's rations (basics); camping gears (pots, bush knives, lightings, batteries, Basic PPEs such as facemasks & gloves), hand sanitizers, and toiletries. Resupply of rations will be based on PROs assessment reports and reissued after a week. Personal emoluments process will begin as soon as all team's personnel are deployed to sites and feedback received from PROs.
- ❑ Moving forward, Vanimo Green district will be rearranging the Covid-19 Response Coordination; ensure essential Services are progressing; ensure ILI Triaging is established at all health facilities in the district to monitor patients coming into the clinic for possible POIs; establish communication with Local Community Leaders, Headmasters, Board of Management for the establishment of POE Screening sites, Quarantine Bay/Shelter and Treatment Centres for very sick COVID-19 case if detected; and work with the main Provincial Counter Covid-19 Coordination Committee in deploying Security personnel to the POEs. For Aitape Lumi district, the next priorities are training and recruitment of unemployed HEOS, nurses & other health care workers; assess, procure and provide basic urgently needed medical equipment and other supplies including medical supplies; procure a fully kited ambulance for covid-19 patients transportation including the rapid response team; continuous risk communication advocacies; fund isolation units for Raihu & Lumi; develop a contingency budget for HCW risk as assurance /security for HCW to manage cases; and ensure funds to manage COVID-19 cases.





**West Sepik:** POE team at Nyaukono



**West Sepik:** Social awareness conducted at one of the logging camps in Vanimo Green district



**West Sepik:** Nurses at Baro CHP in Vanimo Green district triage site for ILI cases



**West Sepik:** IEC materials printed in the Province



**West Sepik:** Arrival of the tents at the airport

## **HIGHLANDS REGION**

### ***Hela***

- ❑ On 23 April, NDoH with the technical support of WHO conducted a 'Virtual Training on COVID-19 Response' for **five trainers** in Hela Provincial Health Authority. The virtual training covered surveillance, clinical management and infection prevention and control, and risk communication. The logistic support, including the training venue and internet facilities were provided by Oil Search Foundation office based in Hela. These trainers will train the health workers responsible for respective technical area in the province. Similar virtual trainings will be conducted for the provinces in the coming days.



### ***Jiwaka***

- ❑ All 28 reporting health facilities were ordered to set up cough triage, screen all cough cases separately, and report SARI urgently to PEOC on a daily basis.
- ❑ The facility set up for persons under investigation in Kindeng is now ready and in use.
- ❑ Other activities include: transport allocation for SARI patients with 1 full-time dedicated ambulance; preparation of isolation unit equipped with beds, oxygen and water supply; set up and operation of check point surveillance at the eastern and western parts of the Highlands Highway; IPC and PPE distribution to surveillance focal points and frontline health workers; and, IEC distribution (17 492 issued posters and brochures and 3 billboards) and advocacy (estimated reach of 20 000 population).

### ***Western Highlands***

- ❑ The total budget required for WHPHA to achieve the goals including the ability to expand its capacity for COVID-19 response is estimated at K 3, 618,000.00, out of which K 420,000 is allocated to date.
- ❑ Training of health care workers to manage COVID-19 is a priority for the province.
- ❑ The WHPHA Health promotion and Disease Prevention teams are leading the advocacy programme and have produced pamphlets and posters to ensure the message is continued when they have left the site.
- ❑ To maintain minimum disruption to the essential health services, clinical plans for O&G, Eye, Paediatric, Emergency Department/Adults are completed and the plans for Medicine and surgery are in draft form pending sign off.
- ❑ The isolation ward is being established in the chapel considering proximity to laundry and the incinerator. In addition to the current support from ICRC, additional resources are required to refurbish and furnish the isolation ward. It is also planned to build accommodation on the Hospital compound for staff working directly with COVID-19 patients to prevent infection.
- ❑ It is planned to procure 2 portable ventilators with monitors for the ICU.
- ❑ The construction of a quarantine shed is ongoing.
- ❑ For additional quarantine facilities: Tinsley Hospital and Tambul are proposed.



## **SOUTHERN REGION**

### ***Central***

- ☐ CPHA Logistics Team delivered supplies: PPEs, Soaps, Information papers (WHO guidelines & Triage settings) to Hula, Kwikila, Boregaina, Upulima and Kupiano, Bereina, Veifa, Agevairu Porebada and Sogeri on 20-21/4/2020.
- ☐ A total of 12 Infra-red thermometers, 6 tents, 6 tables and 12 Chairs were bought for the CPHA COVID-19 Response team.
- ☐ The CPHA COVID-19 Response Team convened a series of meetings with Rita Flynn COVID-19 Emergency team on the response plan.
- ☐ Additional supplies were bought 6 cartons of gloves, 20 cartons of bar soaps for distribution.
- ☐ Quarantine and isolation facilities are identified in Kwikila and Bereina, awaiting the delivery of the tents donated by partners.
- ☐ Trainings for the RRTs were conducted by the trainer.

### ***Gulf***

- ☐ Repurposed the old TB ward to be used for isolation.
- ☐ The province has identified 3 quarantine sites: Kanabea, Kerema and Kikori, however, work has not started due inadequate funding. One will be set up when the donated tents are received.
- ☐ The training for the RRT is a priority for the province.

### ***Milne Bay***

- ☐ The construction of the isolation ward with 8 beds which includes 1 delivery bed is almost completed. Now the priority is to furnish the isolation ward with beds, ventilators and other necessary equipment and drugs.
- ☐ Quarantine facilities been identified.
- ☐ RRT is established but need quality checks.

### ***National Capital District***

- ☐ The facility at Rita Flynn Complex in NCD has 76 beds available and is being expanded to accommodate 100 beds. It can be further extended to up to 1,000 beds in the worst-case scenario.

### ***Oro***

- ☐ Isolation facilities are under construction and almost completed. Now the priority is to furnish the isolation ward with all the necessary equipment and drugs.
- ☐ Quarantine area has been identified but no progress due to inadequate funding. Meanwhile, one will be set up when the donated tents are received.
- ☐ The training for the RRT is a priority for the province.

## **Western**

- ☐ As of 16 April, the first three cases of COVID-19 have been reported in North Fly District, Western Province.
- ☐ Following the confirmation of the 3 cases, a team from the national level was deployed to the province to assist contact tracing and other preventative measures.
- ☐ Kiunga hospital is in containment phase; conducting preparedness and triaging on everybody entering hospital.
- ☐ North Fly District has identified the isolation and quarantine areas in Kiunga, and renovation work is ongoing.

- ❑ South Fly district administration provided funding for the ongoing major renovation of the buildings for triaging and isolation wards.
- ❑ Normal Surveillance is being carried out along the border villages between North and South Fly districts.
- ❑ Daru Hospital started screening and triaging patients.



**Western Province:** Meeting with provincial health headed by Dr Kaptigau



**Western Province:** Isolation ward for Daru under renovation



**Western Province:** Isolation Ward in Kiunga identified (unused Medical store)

## Summary of the updates from the Provinces on COVID-19 Response Priority Areas:

Province	Isolation facilities	Quarantine facilities	Available HRH	Surveillance	Training on IPC, Clinical Management & RRT	Funding with sources
AROB	Suhin HC & Buka Hospital (6 beds)	Pre-triage but no confirmed quarantine facility (want tents if NDOH/partners can provide)	Doctors: 10 HEOs: 3 Nurses: 94 CHWs: 71	Cumulative POIs: 21 (all completed 14-days quarantine)	Provincial conducted trainings while waiting for NDOH/WHO	NDoH: K200,000
East New Britain	Butuwin UC (8 beds)	Butuwin UC (8 beds) (isolation and quarantine are side by side at Butuwin-former HIV/AIDs buildings)	Doctors: 19 HEOs: 23 Nurses: 254 CHWs: 257	Cumulative POIs: 126 (2 positive)	Completed 2 batches of training	NDoH: K200,000
Manus	40 foot container from Asylum seekers leftover taken to hospital ground-6 bed capacity) – A.Kwaramb and team to give clearance for use)	40 foot container taken to hospital ground-6 bed capacity) – A.Kwaramb and team to give clearance for use)	Doctors: 17 HEOs: 13 Nurses: 89 CHWs: 74	Cumulative POIs: 14 (all completed 14-days quarantine)	Provincial conducted trainings while waiting for NDOH/WHO	NDoH: K200,000
New Ireland	Environmental Health Office (temporary). 6-bed isolation ward under construction	Pre-triage in Kavieng hospital. No quarantine facility-also requesting for NDOH/partners to support with tent	Doctors: 17 HEOs: 28 Nurses: 160 CHWs: 124	Cumulative POIs: 316 (all completed 14-days quarantine)	Provincial conducted trainings while waiting for NDOH/WHO	NDoH: K200,000
West New Britain	Identified old TB ward for isolation, 6 bed capacity. Needs renovation and A. Kwaramb and team to approve	Pre-triage set up at provincial Mutuvel stadium with quarantine possibility. Have 3x similar set-ups for tri-age (town urban clinic, Kimbe hospital and Mutuvel stadium)	Doctors: 14 HEOs: 23 Nurses: 170 CHWs: 245	Cumulative POIs: 49 (all completed 14-days quarantine)	Provincial conducted trainings while waiting for NDOH/WHO teams	NDoH: K200,000
East Sepik	Old TB clinic refurbished	Yet to be identified	Doctors: 17 HEOs: 21 Nurses: 158 CHWs: 243	Cumulative POIs: 58 (all completed 14-days quarantine)	In house training completed x 2	NDoH: K200,000

**Coronavirus disease 2019 (COVID-19)**  
**Papua New Guinea Health Situation Report 18 (24 April 2020)**

Province	Isolation facilities	Quarantine facilities	Available HRH	Surveillance	Training on IPC, Clinical Management & RRT	Funding with sources
Madang	Yagaun hospital (18 beds)	Yet to be identified	Doctors: 21 HEOs: 28 Nurses: 223 CHWs: 390	Cumulative POIs: 124 (all completed 14-days quarantine)	No training conducted as yet	NDoH: K200,000
Morobe	Sir Ignatius Kilage stadium	11 mile – self contained rooms	Doctors: 48 HEOs: 11 Nurses: 444 CHWs: 143	Cumulative POIs: 387 (all completed 14-days quarantine)	Completed	NDoH: K200,000
West Sepik	Raihu Hospital and Lumi HC	Dapu HC Baro CHP	Doctors: 10 HEOs: 19 Nurses: 119 CHWs: 332	Cumulative POIs: 43 (all completed 14-days quarantine)	40 officers trained on sample collection & packaging	NDoH: K200,000
Eastern Highlands	Renovated and Completed but require beds etc	PHA has built one	Doctors: 28 HEOs: 15 Nurses: 222 CHWs: 371	Cumulative POI: 107 all completed 14-days quarantine)	Training on use of PPE and specimen collection	NDoH: K200,000
Enga	Pausa in Wapenamanda	None available	Doctors: 21 HEOs: 18 Nurses: 163 CHWs: 226	Cumulative POI: 82 all completed 14-days quarantine)		NDoH: K200,000
Hela	None available, proposed at a new site	None available, proposed at a new site, staff nursing quarter identified	Doctors: 7 HEOs: 8 Nurses: 51 CHWs: 39	Cumulative POI: 103 all completed 14-days quarantine)	Conducted virtual Training (TOT) on Surveillance, IPC, Clinical management and Risk communication for 5 focal persons on 23 April	NDoH: K200,000
Jiwaka	Kindeng, Minj HC, Kol HC, Tabibuga HC	None	Doctors: 1 HEOs: 8 Nurses: 146 CHWs: 102	Cumulative POI: 19 all completed 14-days quarantine)		NDoH: K200,000
Simbu	None available	None available	Doctors: 31 HEOs: 9 Nurses: 139 CHWs: 142	Cumulative POIs: 13 (all completed 14-days quarantine)		NDoH: K200,000
Southern Highlands	Munihi HC	Old Mendi airport hangar	Doctors: 18 HEOs: 10 Nurses: 152 CHWs: 195	Cumulative POIs: 70 (all completed 14-days quarantine)	X2 RRT, ToT training for districts	NDoH: K200,000
Western Highlands	Chapel in the hospital	Identifying warehouse already, needs funding	Doctors: 22 HEOs: 13 Nurses: 217 CHWs: 293	Cumulative POIs: 115 (all completed 14-days quarantine)	RRT being finalized	NDoH: K200,000
Central	Bereina HC and Kwikila Hospital		Doctors: 1 HEOs: 13 Nurses: 35 CHWs: 198	Cumulative POIs: 112 (all completed 14-days quarantine)	3 Trainers trained, Other officers identified for training	NDoH: K200,000

Coronavirus disease 2019 (COVID-19)  
Papua New Guinea Health Situation Report 18 (24 April 2020)

Province	Isolation facilities	Quarantine facilities	Available HRH	Surveillance	Training on IPC, Clinical Management & RRT	Funding with sources
Gulf	Old TB ward	Not yet needs funding, areas identified are Kanabea, Kerema and Kikori, awaiting tents to set up	Doctors: 6 HEOs: 8 Nurses: 48 CHWs: 88	Cumulative POIs: 15 (all completed 14-days quarantine)	Still needs training	NDoH: K200,000
Milne Bay	Alotau Hospital	Identified, yet to progress	Doctors: 20 HEOs: 29 Nurses: 264 CHWs: 493	Cumulative POIs: 47 (all completed 14-days quarantine)	RRT established	NDoH: K200,000
NCD	Rita Flynn Court (76 beds)	Rita Flynn	Doctors: 115 HEOs: 2 Nurses: 667 CHWs: 285	Cumulative POIs: 3777 (75 currently on follow-up)	49 Trainers trained	NDoH: K200,000
Oro	Ward under construction almost completed,	Identified using tents received	Doctors: 10 HEOs: 9 Nurses: 80 CHWs: 107	Cumulative POIs: 16 (all completed 14-days quarantine)	Needs training	NDoH: K200,000
Western	TB Isolation ward at Daru Hospital		Doctors: 9 HEOs: 2 Nurses: 19 CHWs: 40	Cumulative POIs: 172 (5 currently on follow-up; 3 positive)		NDoH: K200,000



## New Materials on COVID-19

### HOW TO WEAR A MEDICAL MASK SAFELY

who.int/epi-win

#### Do's →

- Find the top side, where the metal piece or stiff edge is
- Ensure the colored-side faces outwards
- Place the metal piece or stiff edge over your nose
- Cover your mouth, nose, and chin
- Adjust the mask to your face without leaving gaps on the sides
- Avoid touching the mask
- Remove the mask behind the ears or head
- Keep the mask away from you and surfaces while removing it
- Discard the mask immediately after use preferably into a closed bin
- Wash your hands after discarding the mask

#### Don'ts →

- Do not wear a loose mask
- Do not touch the front of the mask
- Do not remove the mask to talk to someone or do other things that would require touching the mask
- Do not leave your used mask within the reach of others
- Do not re-use the mask

Remember that masks alone cannot protect you from COVID-19. Maintain at least 1 metre distance from others and wash your hands frequently and thoroughly, even while wearing a mask.

EPI-WIN World Health Organization

### #VaccinesWork for All

#### IMMUNIZATION AND COVID-19

World Health Organization Western Pacific Region

It's important to continue immunization services during the COVID-19 pandemic, where it's feasible and with appropriate infection control.

During immunization sessions, reduce your risk of COVID-19 infection by:

- washing your hands frequently,
- avoiding touching your eyes, nose and mouth,
- coughing or sneezing in your bent elbow – not your hands,
- maintaining physical distance.

If you or your child has fever or cough, delay the scheduled vaccination until recovery of symptoms.

#VaccinesWork #COVID19

### #VaccinesWork for All

#### IMMUNIZATION AND COVID-19

World Health Organization Western Pacific Region

To be fully protected, children must receive all the vaccine doses according to national vaccination schedules.

If your child missed a scheduled vaccination due to the COVID-19 pandemic, reach out to your vaccination provider to confirm when and how to receive any missed vaccine doses.

#VaccinesWork #COVID19

### A HOW-TO GUIDE FOR PHYSICAL DISTANCING

**Stay safe if you need to leave your home** for an essential purpose, like grocery shopping or to visit the pharmacy:

- Visit as few different places as possible
- Make a list of what to buy to limit movement in the shop
- Purchase a supply for at least 1 week – leave some for others
- Keep at least a 1m distance from others
- Wash your hands before and after

World Health Organization Representative Office for Papua New Guinea

#BreakTheChain of #COVID19 transmission

### How can I grocery shop safely in the time of COVID-19?

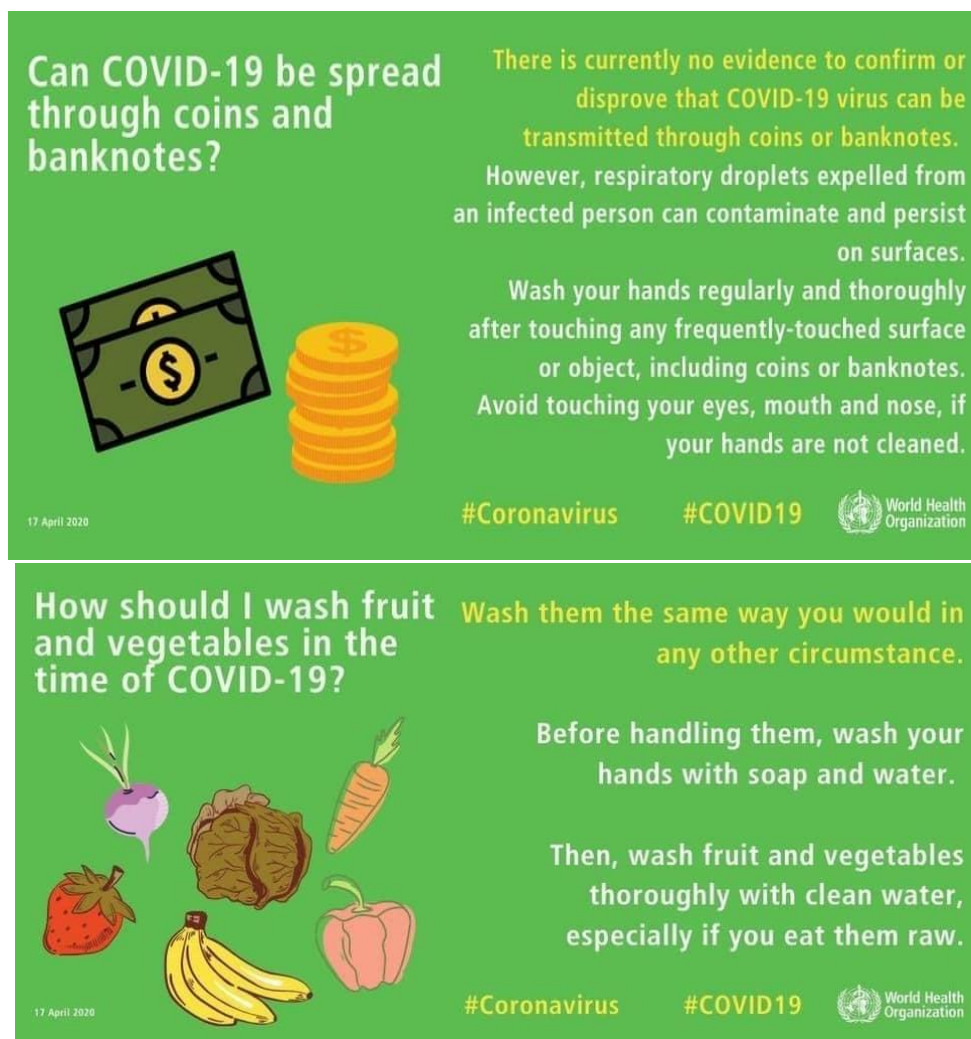
When grocery shopping, keep at least 1-metre distance from others and avoid touching your eyes, mouth and nose.

If possible, sanitize the handles of shopping trolleys or baskets before shopping.

Once home, wash your hands thoroughly and also after handling and storing your purchased products.

There is currently no confirmed case of COVID-19 transmitted through food or food packaging.

World Health Organization #Coronavirus #COVID19 17 April 2020



These advisories are available online. For any new information and updates, check out the links below:

NDOH Facebook page: [https://www.facebook.com/PNGND\\_OH/](https://www.facebook.com/PNGND_OH/)

WHO Papua New Guinea Facebook page: <https://www.facebook.com/WHOPapuaNewGuinea/>

WHO Website: <https://www.who.int/emergencies/diseases/novel-coronavirus-2019/>

-----  
**For more information about this Situation Report, contact Dr Daoni Esorom**  
**Incident Manager, National Department of Health**  
**Email: [daoniesorom@gmail.com](mailto:daoniesorom@gmail.com); Mobile: +675-72313983**