

This Situation Report is jointly issued by PNG National Department of Health and World Health Organization once weekly. This Report is not comprehensive and covers information received as of reporting date.

## Situation Summary and Highlights

- ❑ As of 09 August, Papua New Guinea has a total of 214 COVID-19 cases. From the period of 02 –09 August, there were 104 new cases and 1 death reported.
- ❑ There are now cases reported in nine provinces, with the latest addition of AROB, New Ireland, Sandaun and Southern Highlands.
- ❑ Contact tracing is ongoing for all the cases confirmed in the National Capital District (NCD), Morobe, Sandaun, Western Province and AROB.
- ❑ The urban clinics in the National Capital District (i.e. 6 Mile, 9 Mile, Gordons, Lawes Road and Pari) and the drive-through clinic at the Taurama Aquatic Centre continue to collect samples for COVID-19 testing.
- ❑ Since 28 July, Port Moresby has been placed in a 14-day lockdown with only essential businesses to operate, schools closed, and public transport services stopped.
- ❑ All national pandemic measures issued prior to 04 August were revoked and replaced by a new set of measures. On 07 August, Measure 3 (Domestic Travel Measures) issued on 04 August was revoked to order that no person may travel by aircraft from one province in PNG to another province in PNG, unless provided an exemption in writing by the Controller or his delegate.
- ❑ A multisectoral working group has developed an operational blueprint for the National Control Centre that includes: (1) a risk assessment framework; (2) details on implementing multi-sector measures; and, (3) operational framework for the National Control Centre and its support to provinces.
- ❑ In the National Gazette issued on 06 August, Governor General Grand Chief Sir Bob Dadae called out the PNG Defence Force to assist the PNG Royal Constabulary to maintain law and order during the COVID-19 National Pandemic Security Operations through PNG from 01 August to 01 November 2020.
- ❑ The Australian Medical Assistance Team arrived on 04 August and the members are now under quarantine. Coordination meetings with the National Control Centre and the Port Moresby General Hospital are ongoing.
- ❑ Prime Minister Hon James Marape launched the COVID-19 Awareness and Assessment Plan 2020 with the Minister for Public Service, Minister for Community Development and Religion and NCD Governor.
- ❑ The first delivery of medical equipment and PPEs under the Pacific Humanitarian Pathway Initiative arrived in Port Moresby on 06 August.

**Table 1. COVID-19 IN PAPUA NEW GUINEA**

	New Cases	Total
National Capital District	91	193
AROB	1	1
Eastern Highlands	0	1
East New Britain	0	2
Morobe	2	4
New Ireland	1	1
Sandaun	1	1
Southern Highlands	1	1
Western	7	10
<b>TOTAL</b>	<b>104</b>	<b>214</b>

**Table 2. COVID-19 GLOBAL AND REGIONAL UPDATE<sup>1</sup>**

	Confirmed Cases	Deaths
Global	19 187 943	716 075
Western Pacific	359 410	8 663

<sup>1</sup> WHO Situation Report # 201, Data as of 08 August 2020

## Upcoming Events and Priorities

- ❑ **Coordination:** The National Control Centre, through an multisectoral working group, has developed an operational blueprint that includes: (1) a risk assessment framework; (2) greater sector details on implementing multi-sector and non-pharmaceutical measures; and, (3) operational framework for the National Control Centre and its support to provinces. The Blueprint, once finalized, provides the National Control Centre decision making guidelines and a toolkit for response phases.
- ❑ **Surveillance, Testing and Quarantine:** Sample collection in urban clinics in NCD, at the drive-through clinic at Taurama Aquatic Center and at Rita Flynn Facility will continue, to be supported by advocacy and targeted messaging. Other urban clinics are being prepared to initiate swabbing. Contact tracing is ongoing for all the cases confirmed in the recent week. Additional resources are required to improve monitoring of persons in quarantine, facility assessments and in instituting home quarantine.
- ❑ **Case Management and Infection Prevention and Control:** The National Control Centre, with support from WHO, is in the process of developing National Guidelines on Clinical Management for COVID-19 Cases to standardize the delivery of COVID-19 clinical management across all provinces and ensure that evidence-based care is delivered as per the

emerging findings. The NCD PHA is exploring options for non-health facility and community-based isolation. Some countries have also expressed their interest in deploying emergency medical teams (EMTs) in PNG following the AusMAT from Australia. Printing and distribution of the National IPC Policy and Guidelines is underway.

- ❑ **Risk Communication & Non-Pharmaceutical Interventions (NPIs):** Political and community leaders are continuously being engaged. Media, including social media, are being used to encourage behaviour change in hygiene practice, symptoms monitoring, staying at home when feeling unwell and reporting to the national hotline. The Niupela Pasin cluster will follow through the support requested from partners in the enforcement of national pandemic measures and the National Control Centre to monitor weekly progress and compliance against targets on the implementation of the recommended measures by establishments. Training continues for civil society organizations in risk communication.

## National Transmission Assessment

### 3 – Large-scale community transmission

Cases continue to increase rapidly in Papua New Guinea. With 91% of new cases in the past 14 days reported from the National Capital District, community transmission in NCD is indicated. In the past 14 days, 14 cases have been reported from six other provinces including four newly affected provinces. Thirteen (93%) of the cases reported outside of NCD had travel history from Port Moresby or contact with a positive case from Port Moresby, demonstrating the extent of transmission in the nation's capital. With lack of movement restriction and low compliance to non-pharmaceutical interventions in Port Moresby, rapid increase in cases is expected and with movement to provinces it is expected to see sporadic cases and local clusters reported by other provinces. Testing in all provinces remains critically low, therefore ongoing transmission in other parts of the country is a possibility as population mobility continues. Importation from bordering Papua Province in Indonesia and incoming travellers from other countries reporting COVID-19 cases also remains a threat. Testing needs to increase substantially to understand the extent of transmission.

### Epi Update COVID-19

Tests <b>968</b> NAT Tests past 7 days	Cases <b>104</b> New cases past 7 days	Deaths <b>1</b> Deaths past 7 days	ICU Admissions <b>0</b> ICU Admissions past 7 days
--	--	--	--

<b>11439</b> Cumulative NAT Tests	<b>214</b> Cumulative Cases	<b>3</b> Cumulative Deaths	<b>6</b> Cumulative ICU Admissions
--------------------------------------	--------------------------------	-------------------------------	---------------------------------------

<b>0</b> Imported Cases in past 28 days	<b>18*</b> Cases in past 28 days with no link	<b>4*</b> Active Clusters	<b>*</b> Active clusters with >3 generations
--	--	------------------------------	---

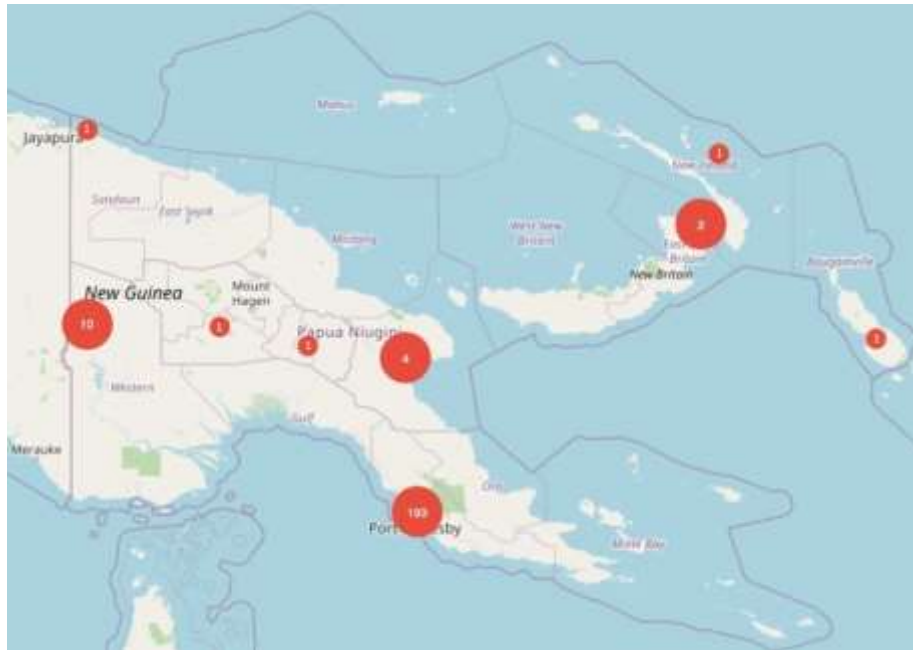
### Health Service Provision COVID-19

<b>4530</b> Health care workers trained in COVID19 Case Management	<b>11**</b> Healthcare worker cases reported past week	<b>1</b> Hospitals admitting COVID-19 patients	<b>70</b> ICU beds for COVID-19 patients	<b>&gt;381</b> Non-ICU Hospital beds for COVID19 patients
---	---	---	---	--

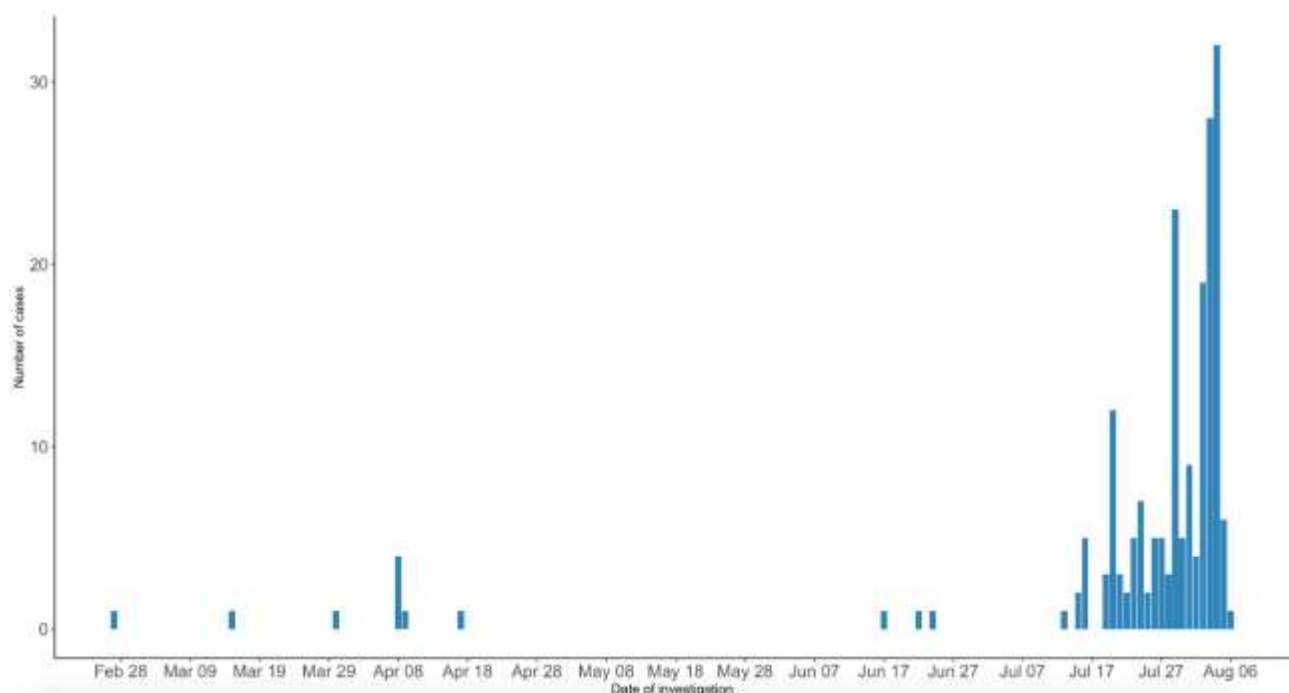
\* Case investigations are ongoing; \*\* Includes NDOH staff

# Epidemiology

- Papua Province in Indonesia is continuously reporting COVID-19 cases in areas that border Sandaun and Western Provinces in Papua New Guinea. While the border is officially closed, the threat of case importation from Indonesia remains high. As of 8 August, Papua Province has reported a total of 3151 confirmed cases and 35 deaths (data accessible at <https://covid19.papua.go.id/>).
- There are now cases reported in nine provinces of Papua New Guinea, with the latest addition of the Autonomous Region of Bougainville, New Ireland, Sandaun and Southern Highlands.



**Figure 1. Distribution of Confirmed COVID-19 Cases in Papua New Guinea, March to 9 August 2020**



**Figure 2. Epi Curve of COVID-19 cases in Papua New Guinea, April to 09 August 2020**

## Strategic Approach

### National and Provincial Public Health Response

- The Pandemic Response Coordination Group and the Health Operations Team continue to meet daily.
- A multisectoral working group has developed an operational blueprint for the National Control Centre that includes: (1) a risk assessment framework; (2) details on implementing multi-sector measures; and, (3) operational framework for the National Control Centre and its support to provinces.
- The PNG Defence Force is mobilised to assist the PNG Royal Constabulary to maintain law and order during the COVID-19 National Pandemic Security Operations throughout the country from 01 August to 01 November 2020, in accordance to Section 204 of the Constitution and Section 20 of the Defence Act (Chapter 74).
- Measure 3 (Domestic Travel Measures) issued on 04 August was revoked to give way to a new measure ordering that no person may travel by aircraft from one province in PNG to another province in PNG, unless provided an exemption in writing by the Controller or his delegate.
- Circular No 22/2020 was issued by the NCD Provincial Health Authority (PHA) instructing the following: (1) Gerehu General Hospital to remain open 24 hours; (2) All urban clinics to remain open during working days and weekends; and, (3) Staff to be rostered accordingly.
- The Department of Personnel Management (DPM) issued Circular Instruction No.19 of 2020 for scaling down non-essential staff in the public-sector workforce during the 14-day lockdown starting from 28 July 2020. The instruction differentiated the essential and non-essential staff and ordered service continuity under new normal work arrangements. All agency heads were instructed to ensure 'new normal' workplace arrangements and strategies to prevent COVID-19, such as conduct of health monitoring of the staff and provisions for PPE.
- The Ministry of Education issued a press release about the immediate suspension of classes in public and private schools and institutions in the National Capital District for 14 days covering the period of 29 July to 12 August 2020.
- Partners in private, public and NGO sectors are welcome to support the COVID-19 response, especially in Niupela Pasin Cluster to enforce implementation of Niupela Pasin. All partners were requested to contact NDoH, NCC or WHO for coordination of support.

### Surveillance and Points of Entry

- The COVID-19 National Control Centre Hotline (1800200) has adjusted its operations from 6 am to 10 pm. Any medical emergency outside of these hours are referred to the nearest hospital or ambulance services.
- Surveillance updates are disseminated daily to provinces by the Surveillance and Epi Team of the National Control Centre.
- Most of the provinces submit daily reports of suspected COVID-19 (including SARI) patients. While completeness of reporting is increasing, sample collection and testing are still not adequate to generate reliable transmission assessment.
- NCD PHA and WHO held a contact tracing training for sixteen volunteers, including ten volunteers from St. John's Ambulance, which covered an overview of COVID-19, its transmission dynamics and natural history, objectives of contact tracing, components of contact identification and contact quarantine, monitoring and data management. The trainees started contact monitoring at the NCD PHA Emergency Operations Centre on the day after the training.
- Digicel pledged to support NCD PHA with three-month worth of phone credits to support seven staff of the surveillance, rapid response and contact tracing team.
- Circular No 22/2020 was issued by NCD Provincial Health Authority instructing that the roll out of COVID-19 pre-triage screening and sample collection must continue. NCD is expected to collect up to 1000 samples per day.
- The urban clinics in the National Capital District (i.e. 6 Mile, 9 Mile, Gordons, Lawes Road and Pari) and the drive-through clinic at the Taurama Aquatic Centre continue to collect samples for COVID-19 testing.

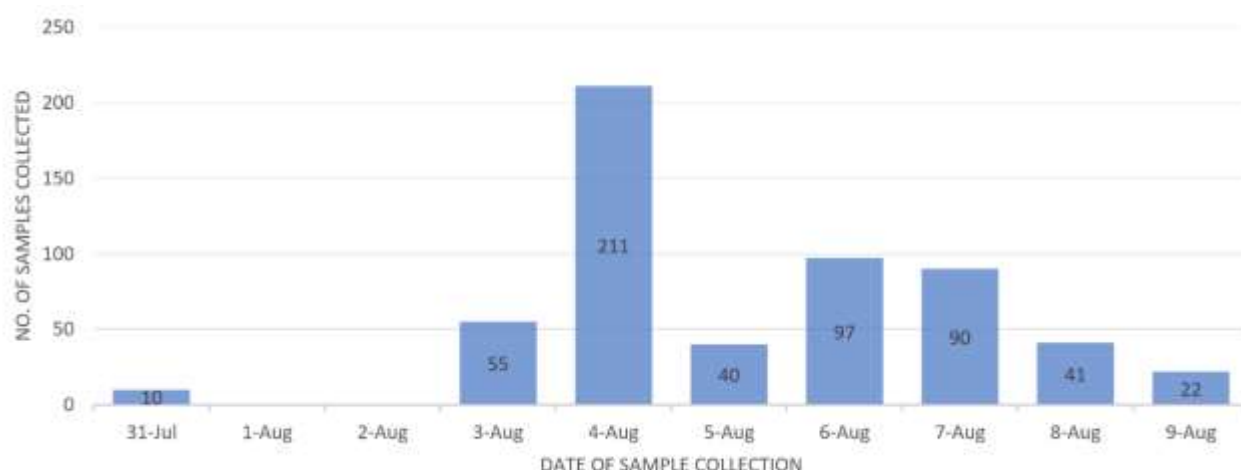


Figure 3. Number of Samples Collected from NCD Urban Clinics and Other Facilities, 31 July – 9 August 2020 (n=566)

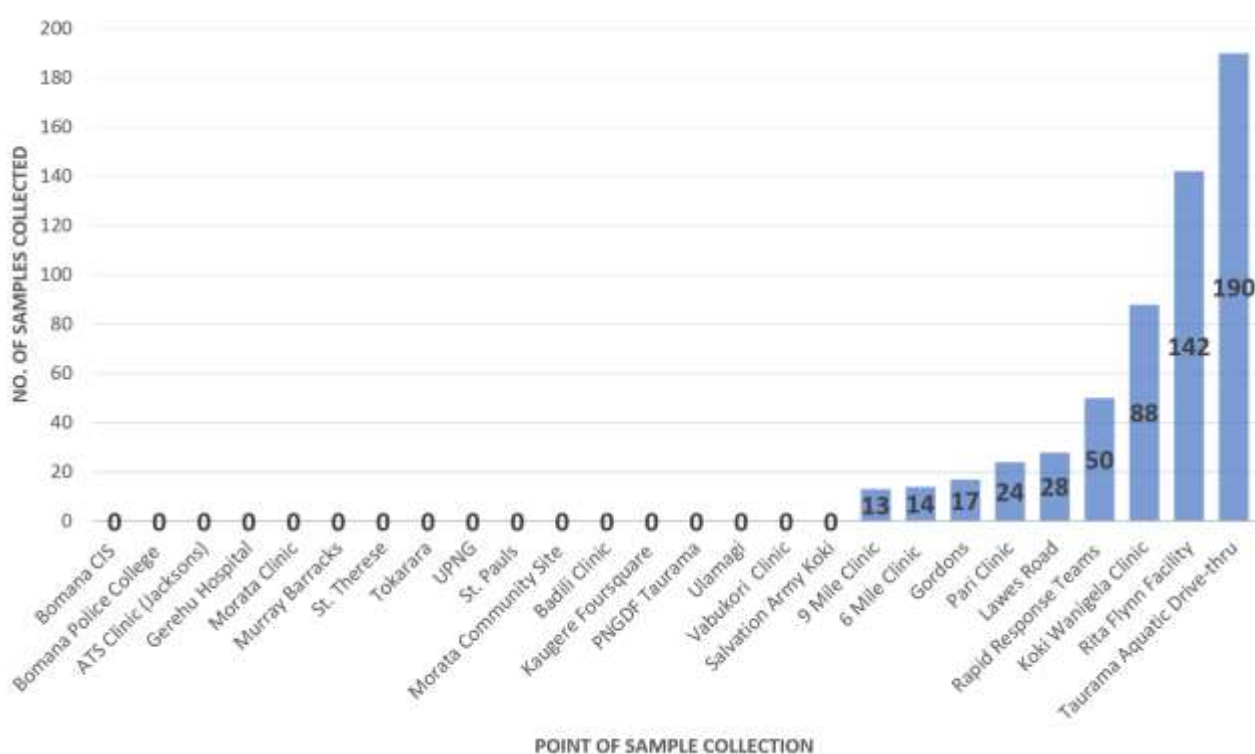


Figure 4. Number of Samples Collected from NCD Urban Clinics by Facility, 31 July – 9 August 2020 (n=566)

Table 3. Persons Screened by Point of Entry

Total Number of Travelers Screened before SOE (until 22 March)	29 387	
Total Number of Travelers Screened during SOE (23 March – 16 June)	3779	
Total Number of Travelers Screened after SOE (17 June – 07 August)	Air	2127
	Sea*	230
	Land	6
	Total	2363

\* 3 passengers and the rest are crew

## COVID-19 Prevention, Detection and Control

- For the recent cases detected, the Provincial Health Authorities are leading the case investigation and contact tracing with support from the National Control Centre and WHO.
- The National Control Centre, with support from WHO, is in the process of developing National Guidelines on Clinical Management for COVID-19 Cases to standardize the delivery of COVID-19 clinical management across all provinces and ensure that evidence-based care is delivered as per the emerging findings.
- The country will strengthen patient care pathways, including screening and triage, early diagnosis and isolation, and quality assurance and improvement (QA/QI) of care, provision of intensive care for the cases to reduce mortality, and preventing nosocomial infection at healthcare facilities. IPC strengthening activities are ongoing.
- With the anticipation that the Rita Flynn Isolation Facility will reach its maximum capacity of 70 soon, the NCD PHA, NCC and partners are working together to convert the Taurama Aquatic Centre to a 300-bed capacity facility.
- NDoH and WHO have partnered with the Australian Government (DFAT), John Staff and Burnet Institute in launching an essential online training program for healthcare workers in PNG for COVID-19. The training contains practical resources and scenarios that are tailored to the needs of the country, especially for both clinical and administrative staff.

**Table 4. Trainings under the NDOH-UNICEF PNG COVID-19 Emergency Response Project (funded by World Bank)**

No	Province	Date	No. of Batches	No. of Healthcare Workers and Programme Managers Trained
1	Western Highlands	23 – 25 June	1	21
2	Jiwaka	30 June – 02 July	2	38
3	Central	06 – 08 July	2	37
4	Simbu	07 – 09 July	1	20
5	Central	27 – 29 July	1	18

**Table 5. Number of Health Care Workers Trained by Province**

Province		Total	Province		Total
No.	MOMASE REGION		No.	NEW GUINEA ISLANDS REGION	
1	Madang	346	12	ARoB	37
2	Morobe	425	13	East New Britain	236
3	East Sepik	92	14	Manus	89
4	West Sepik	200	15	New Ireland	320
No.	HIGHLANDS REGION		16	West New Britain	328
5	Eastern Highlands	114	No.	SOUTHERN REGION	
6	Enga	132	17	Central	331
7	Hela	81	18	Gulf	30
8	Jiwaka	111	19	Milne Bay	94
9	Simbu	20	20	NCD	269
10	Southern Highlands	367	21	Oro	34
11	Western Highlands	803	22	Western	71



**Table 6. Number of Facilities and Beds for COVID-19 as of 09 August 2020**

Health Facilities	Number of Provinces	Number of Facilities	Number of Beds	Provinces that Reported
Pre-triage facilities	18	78	N/A	ARoB, ENB, NI, WNB, ES, Madang, Morobe, WS, EH, Enga, Hela, SH, WH, Central, Gulf, NCD, Oro, Western
Quarantine facilities	14	19	>160	ARoB, ENB, Manus, NI, Madang, Morobe, EH, Hela, Jiwaka, SH, NCD, Oro, Western
Quarantine facilities (underway)	14	17	>99	ARoB, ENB, Manus, WNB, ES, Madang, WS, EH, Hela, SH, WH, Central, Gulf, NCD, Western
Isolation facilities	18	25	>381	ARoB, ENB, Manus, NI, WNB, ES, Madang, Morobe, WS, EH, Hela, Jiwaka, WH, Gulf, MB, NCD, Oro, Western
Isolation facilities (underway)	14	26	> 66	ARoB, Manus, Madang, Morobe, WS, EH, Enga, Hela, SH, WH, Central, MB, NCD, Oro, Western
Intensive Care Unit	14	15	70	ENB, Manus, WNB, Madang, Morobe, EH, Hela, Simbu, SH, WH, MB, NCD, Western
Autonomous Region of Bougainville (ARoB), East Sepik (ES), East New Britain (ENB), Eastern Highlands (EH), Milne Bay (MB), National Capital District (NCD), New Ireland (NI), Southern Highlands (SH), West New Britain (WNB), Western Highlands (WH), West Sepik (WS)				

## Communication, Community Engagement and Non-Pharmaceutical Interventions (Social Measures) – NIUPELA PASIN

- Prime Minister Hon James Marape launched the COVID-19 Awareness and Assessment Plan 2020 with the Minister for Public Service, Minister for Community Development and Religion and NCD Governor. The risk assessment aims to: (1) help create a safe environment for child and adult beneficiaries and protect them from COVID-19; (2) provide a benchmark to assist those involved in organizing COVID-19 awareness for children and adults to make informed decisions/choices; and (3) promote good practice and challenge practice that is harmful to children and adults on COVID-19 during this pandemic.
- NDOH Incident Manager regularly joins a TV and radio show on NBC with Minister for Information and Communication Technology every Monday, Wednesday and Friday. It is a platform to update on the situation, and remind the public on prevention measures such as: (1) avoiding crowded places and limit time in enclosed spaces; (2) maintaining at least 1.5 m distance from others; (3) open windows and doors for ventilation when possible; (4) keeping hands clean and cover coughs and sneezes; (5) mandatory wearing of face masks in public; and (6) frequent hand washing.
- The National Capital District Provincial Health Authority scaled up risk communication and community engagement in the capital city. Series of trainings and community outreach were conducted covering all zones. For the period of 04 to 07 August, NCD PHA engaged 27 communities in Moresby Northwest (8330 people reached), 15 communities in Moresby South (1866 people reached) and 31 communities in Moresby North East (3912 people reached). WHO and NDOH provided technical support in the training of about 140 village health workers to be deployed and provision of communication materials. UNICEF and partners such as FHI 360 through US AID, World Vision Papua New Guinea provided funding and other operational support to the teams.
- NDOH and WHO also supported NCD-PHA in the training of 30 PNG Defense Force soldiers on risk training related to Niupela Pasin and tippy tap demonstration, These PNGDF personnel will join the NCDPHA team on the ground starting next week in the community outreach.
- Technical support for communications provided to other PHAs by NDOH and NDOH, as part of the messaging for preparedness and response.

- The Business Council of Papua New Guinea expressed their support for the implementation of Niupela Pasin by ensuring that their staff wear masks and they implement proper measures. The Council indicated their commitment in dialogue about the implementation of Niupela Pasin and holding the business sector accountable. The dialogue will be held with over 60 business executives, representing 20 business sectors in agriculture, manufacturing, banking, extractives as well as 16 provincial chambers and several districts.
- With support from WHO, UNICEF, USAID, Australian and New Zealand Governments, public service announcements on Niupela Pasin by the National Department of Health and COVID-19 testing continue airing on multiple platforms: TV, radio and social media (Facebook). The two videos have been placed for broadcast during the month of August with a total of 674 spots on EMTV, Radio Light, FM100, Hot97 FM, YUMI FM, Nou FM, Legend FM.
- A total of twenty full-page and centre spread newspaper insertions of the Niupela Pasin and Quarantine messages were placed in the National, Post Courier and Wantok Niuspepa.
- With the support from the World Bank, UNICEF's project sets the 4-minute song video for 116 spots for primetime airing on FM100, Hot 97 FM, TVWAN and EMTV from 17 July to 16 August. The radio and TV stations take up to 95% of the listenership and viewership throughout the country.
- New messages and products developed and shared with provinces and partners: package of 8 infographics for healthcare facility and healthcare workers; boosting immunity; coping with stress; recognizing signs and symptoms and getting tested; pregnancy and breastfeeding and COVID-19; difference between quarantine and isolation; and reinforcement of prevention measures in various settings.
- While the Ministry of Education issued a press release on the suspension of public and private schools and institutions in the National Capital District from 29 July and 12 August 2020, the Ministry directed to continue classes in other provinces and comply with prevention measures, such as washing hands regularly or using hand sanitizers, health monitoring of students with thermometers and maintaining physical distancing.

**Table 7. Monitoring of NPIs Implemented in Papua New Guinea**

Social Measures	Monitoring Status					
	Date first implemented	Date last modified	Implementation		Partial lift Lifted for some area	Lifted Lifted for all areas
			Geographical (national or sub-national)	Recommended or Required		
Hand Hygiene and Respiratory Etiquette	16 January*	4 August	National	Recommended		
Wearing Face Masks	29 July		Sub-national**	Required		
School Closure	23 March	28 July	Sub-national**	Required		
Workplace Closure	23 March	4 May	National	Required		√
Mass Gatherings	23 March	28 July	National	Required		
Stay at Home	23 March	28 July	Sub-national**	Required		
Restrictions on Internal Movement (within country)	23 March	7 August	National	Required		
Restrictions on International Travel	14 February	23 July	National	Required		

\* First social media post done; \*\* In National Capital District only; \*\*\* AROB has extended its SOE up to 14 August

## Logistics and Supplies

- WHO encourages partners to utilize the COVID-19 Supply Portal accessible at <https://covid-19-response.org/>. The Portal is a purpose-built tool to facilitate requests for critical supplies by national authorities and partners. The requests are assigned to purchasing agencies that can execute the order and process it, utilizing existing ordering systems.
- The first delivery of medical equipment and PPEs under the Pacific Humanitarian Pathway Initiative arrived in Port Moresby on 06 August. This initiative is part of a regional coordination platform established by eighteen countries of the Pacific Islands Forum to facilitate timely and rapid movement of medical and humanitarian assistance across the Pacific. This is supported by the Pacific Islands Forum Secretariat, the UN World Food Programme Pacific Office, the Government



of Australia and Australian High Commissions in Suva and Port Moresby, Fiji Airways, Air Niugini, National Airports Corporation, PNG COVID-19 National Control Centre, WHO and UNICEF.

- UNICEF provided 20 new tents (72 sqm) to NDOH in collaboration with DFAT for improvement of hospital pre-triage.
- Resource gaps have been computed for PPEs to cover the next six months up to January 2021. Based on the calculations, it is planned that 20% of the resource requirements will be shouldered by the Government of Papua New Guinea, and the other 80% will be mobilised from partners.

## Funding and Expenditure

- Below is a summary of COVID-19 funding and expenditure by fund source as of 24 July. The table below pertains only to funds that were held and transacted through the NDOH Health Services Improvement Program (HSIP) Trust Account, thus not comprehensive to cover all COVID-19 support made available to the country and provinces through other modalities (e.g. funding through UN Agencies, etc.).
- Total funds received from the Government of Papua New Guinea (GoPNG) 2020 Warrants is PGK 45.3 million. PGK 2.0 million was allocated to NCC activities. Expenditure to date is PGK 38.3 million (PGK 36.8 million for main activities and PGK 1.5 million for NCC activities). Outstanding commitments stand at PGK 6.8 million. Thus, the available funds out of the GoPNG Funds is PGK 160 822.
- A total of PGK 4.4 million allocated to 22 PHAs was transferred to the provinces via HSIP Subsidiary/Provincial Trust Accounts. Based on expenditure reports received, 97% of GoPNG funds in PHAs have been expended/committed.
- Funds received from New Zealand Aid amounts to PGK 6.29 million. PGK 5.99 million was transferred to the provinces while PGK 308 800 remain in the parent account for monitoring activities.
- Under the HSIP Trust Account, the total available funds from all sources is PGK 4 363 276.

**Table 8. COVID-19 Funding and Expenditure Summary by Fund Source as of 24 July 2020**

No.	Funding Source	Initial Amount	YTD Expend	O/S Commitments	Balance Available
1	GoPNG: NDoH 2019 HIV/AIDS Reprogrammed Funds	3 299 651	2 129 816	635 707	534 128
2	GoPNG COVID-19 Funds 2020 from Treasury 2020	43 300 000	36 818 905	6 481 096	0
3	GoPNG COVID-19 Funds 2020 from Treasury (NOC)	2 000 000	1 482 935	356 243	160 823
4	DFAT Emergency COVID-19 Funding	21 452 845	18 250 000		3 202 845
4	UNICEF Contribution to COVID-19	218 728	133 048		85 680
5	WHO COVID-19 Surveillance Funds (for 22 Provinces)	634 240	634 240		0
6	Private Sponsors	1 181 001	1 108 500	1 500	71 001
7	New Zealand Government	6 298 800	5 990 000		308 800
<b>Total Funds in HSIP</b>		<b>78 385 265</b>	<b>66 547 444</b>	<b>7 474 545</b>	<b>4 363 276</b>

## Best Practice/Lessons Learned

### Response Enabling Factors and Adjustments to the Response

- Testing is critical in assessing the transmission of COVID-19 in the country. With minimal testing and low reporting among the provinces, various aspects of the response remain uninformed. Targeted public messaging is critical to encourage the public to present themselves for testing. The quality and flow of information are also important determinants of successful planning and response.
- Recognising the limitations of the health system, the country takes on a proactive approach in securing additional support. Continuous engagement and coordination with various stakeholders and development partners result to identification of areas of pandemic response where support is required. Partners consistently support procurement of PPE, medical and laboratory supplies to prepare for, detect and respond to the outbreak of COVID-19 in the country. Non-government organizations are also willing to support in community testing, home quarantine and isolation.
- The NCD PHA and National Control Centre, in implementing community-based testing, are engaging community leaders to earn the trust of their respective communities, support crafting appropriate messaging to explain and encourage testing, and ensure safety of healthcare workers deployed to collect samples in the communities. The PNG Defence Force is also supporting to provide additional human resource for swabbing.
- NDoH and partners continue to provide essential health services, including HIV counselling, testing and antiretroviral therapy services, TB treatment and family health services (maternal and child health, family planning and immunization).
- Provincial profiles are regularly updated based on the responses of provincial authorities to the Provincial Preparedness Checklist. Additional sources of information include the records of assessment for medical and non-medical equipment, laboratory diagnostics, health workforce and financial resources from stakeholders and partners. These are helpful in priority actions to address the identified challenges and difficulties experienced by the provinces.
- The COVID-19 response in PNG is updated on the NDOH's website. Weekly national situation report is issued and made accessible at <https://covid19.info.gov.pg/>.

## ANNEX A – National Pandemic Measures Issued on 04 and 07 August 2020

Number	Title	Scope of the National Pandemic Measures Issued on 23 & 24 July 2020	Modification in the National Pandemic Measures Issued on 04 August 2020
No. 1	Revocation of all previous measures	Revocation of all previous measures prior to 23 July 2020.	Revocation of all previous measures prior to 4 August 2020.
No. 2	International travel measures	Definition and designation of First Port of Entry; entry of vehicle, vessel or aircraft coming into PNG only through First Port of Entry; entry of persons to PNG (including citizens and permanent residents) by aircraft and vessels; no person is permitted to board an aircraft bound for PNG unless tested for COVID-19 using RT-PCR within 14-day period prior to boarding and have returned negative results; exemption can be given in writing by Controller; suspension of traditional border crossing arrangements (with Indonesia, Australia, FSM, Solomon Islands); boarding of aircraft bound for PNG only with exemption in writing by Controller; quarantine of returning citizens and permanent residents at designated facilities (at Government's cost) or designated hotels (at individuals' cost); quarantine of non-citizens and non-permanent residents at designated hotels (at individuals' cost); self-quarantine of foreign diplomats at appropriate residence for 14 days; approved by the Controller, a person will have seven days quarantine in a designated location in Port Moresby after staying in Queensland, Australia for seven days; persons requiring regular support in daily lives are allowed to be in quarantine with their carer upon arrival overseas together with the suitable arrangement made for accommodation; upon arrival at the designated hotel for quarantine, a person who requires quarantine shall surrender her or his passport to the designated hotel; the hotel is to return the passport upon completion of the quarantine and released by an authorised person; refusal of undertaking the PCR testing will result in extending 14-day quarantine since the date of denial for testing; failure to adhere to self-quarantine as an offence under National Pandemic Act 2020 and declaration as persona non grata of those who fail to comply; quarantine exemption granted by Controller; requirements for compliance for self-isolation and quarantine; conditions for leaving a designated place prior to completion of 14 days; exemption of 23, 24 & 25 for those who travel with a diplomatic travel document or a diplomatic	Noted that these measures are compliant with the COVID-19 measures issued by the International Civil Aviation Organization

		passport; and authorized officials to ensure appropriate levels of surveillance and border monitoring systems. Aircrafts are allowed to come into point of entry in PNG departing from Cairns and Brisbane Airports, and exempted in writing by the Controller. Additional one hotel in Schedule 3 as designated hotel.	
No. 3	Domestic travel measures	Conditions for compliance of all domestic flights; no restriction of flights within PNG; non-restriction of travel by foot, vehicle and vessel between provinces; and roadblocks to be established when directed by Controller. Travellers shall have a valid reason to travel to and from Port Moresby, including: (1) students returning to their usual place of residence or returning to their educational institutions; (2) persons returning to their usual residence; (3) essential services; (4) seeking medical assistance and medical evacuation; and (5) emergency transport, including but not limited to repatriation of deceased persons. All airlines are required to implement the ICAO take off guidelines. A person or organization that allows a person to board an aircraft in breach of the requirements of all domestic flights shall be deemed to have committed an offence under the National Pandemic Act 2020.	Noted that these measures are compliant with the COVID-19 measures issued by the International Civil Aviation Organization
No. 4	Provincial coordination measures	Appointment of Provincial Administrators as authorised officers for implementation of measures in the respective provinces, and the Chief Secretary for ARoB; set-up and composition of Provincial Advisory Committee; the development of Provincial Response Plan consistent with National Response Plan; set up of Provincial Control Centre; daily required reporting of Provincial Administrators to the Controller; observance of safe health and hygiene practices as recommended by NDoH and PHA; and, provisions for provincial authorities to take additional measures such as curfews or fines.	No modification
No. 5	Burial of deceased persons measures	Controller's authority upon request of PMGH or PHA to direct a mass grave, designate its location and direct burial of deceased persons in the designated mass grave as well as requisition of refrigerated shipping containers for the purpose of temporary interment; burial or temporary interment directed by Controller will be at the Government's expense; PMGH or PHA to keep a record of persons interred in a designated grave or designated refrigerated shipping containers taken away from morgue they are responsible for.	No modification

No. 6	Customs duties measures	Exemption from all customs duties and import duties of all incoming medical supplies procured on behalf of the Government until the end of the declaration of the pandemic, and medical supplies shall be given priority and be released without delay.	No modification
No. 7	COVID-19 testing measures	Testing equipment to be used for COVID-19 are RT-PCR, GeneXpert and rapid diagnostic test; approved organizations to conduct testing are NDoH, IMR, PHAs, PMGH, St John Ambulance, OkTedi Mining, Simberi Gold, 2K Medical Clinic, Newcrest Mining, K92 Mining, Sky Health and Medical Services and Morobe Consolidated Goldfields Ltd, Pacific International Hospital and ExxonMobil.	No modification
No. 8	COVID-19 surveillance and testing measures	National case definitions of COVID-19 and Severe Acute Respiratory infection (SARI); all hospitalized/ admitted cases of respiratory illness, including pneumonia and all cases of SARI as suspected COVID-19 cases who should be tested within 24 hours of being admitted and to be managed using COVID-19 IPC protocols; all the health facilities listed in Schedule 2 must set up pre-triage service and ensure IPC measures; all health facilities in Port Moresby to collect samples from COVID-19 suspected cases those who are over 10 years old; the swabbing for testing a minimum of five patients with influenza-like illness symptoms per week; The delegate of the Controller is Deputy Controller, Dr Paison Dakulala; and Schedule 2 for health facilities newly added, including all private urban health facilities, all public health facilities classified as Level 3 and above.	No modification
No. 9	Business and social measures	The curfew is in place between 10 pm and 5 am daily in NCD with exceptions for urgent medical care, police assistance, emergencies and persons listed in Schedule 1; closures of venues or part of venues provides nightclubs activities,; operation of restaurants and gambling place with hygiene practice; no professional or club sport teams to participate in matches; no affiliated sporting codes shall train or participate in matches unless with approval from PNG Sports Foundation; responsibilities of PNG Sports Foundation area requirement to submit a weekly report to the controller; requirements for local religious activities in social distancing and hygiene standards; banning of religious gatherings such as provincial and national church gatherings, crusades, conventions and provincial or national outreach programmes; closures of nightclubs; Hand hygiene and other hygiene measures are to be practiced at venues or	The closure of venues or part of venues that serve alcohol without food; licensed premises that sell takeaway alcohol shall not sell alcohol on Fridays, Saturdays and Sundays; no audience allowed for any clubs or sporting matches; reporting by PNG Sports Foundation is no longer in the measures; immediate closure of Boroko Market; the removal of SOP development by the Council of Churches; The PNG Business Council to develop COVID-19 business continuity plans in NCD; all restaurants to submit information about physical size of restaurant seating areas and seating plans to the PNG Business Council; and no chewing of buai in NCD except in private dwellings.

		part of the venues operates for the sales and consumption of alcohol; mandatory wearing of masks or face covering for all the spectators; lifted restriction for licensed gambling venues; and ban on gatherings of over 50 persons. Specific measures described for all markets, including maintaining 1.5 m physical distancing and washing hands or use hand sanitizer when people enter and exit into the place of worship.	
No. 10	Mandatory Mask Wearing in Port Moresby	Mandatory mask wearing in Port Moresby effective on 29 July 2020. The measures specified wearing masks or face coverings in enclosed space in establishments (business establishments, health facilities, sporting venues, places of worship, community centres, libraries art galleries, museums, zoos and other similar facilities, convention centres arenas, stadiums, and other event spaces, and government facilities) aircraft, public transport (busses, vessels and taxis), and designated markets. Child care facilities schools and banks are exempted from the establishments for purpose of these measures. Also, there are exemptions for wearing masks for those who are: (1) children under 12; (2) persons with underlying medical conditions which inhibit their ability to wear a mask or face covering, including persons with physical or mental illness or impairment, or disability; (3) persons who are unable to place or remove a mask or face covering without assistance; (4) persons undergoing dental treatment or other medical care to be the extent that the procedure requires that no face covering may be worn; (5) persons within an area of work designated for them and not for public access, and who can work in an environment whereby they work a minimum of 2 metres from any other persons; (6) persons participating in sporting activities; (7) when directed to remove the face covering to ascertain identity; and (8) during emergencies. Furthermore, people are exempted and remove masks and face coverings to eat, drink or take medication. It is an offence under the National Pandemic Act 2020 to: (1) fail to take reasonable steps to ensure adherence to the measures for a business, organization or government department or agency; and (2) remove a mask or a face covering on aircraft.	The exemption for pilots wearing masks on aircrafts in PNG was removed.



<b>Number</b>	<b>Title</b>	<b>Scope of the National Pandemic Measure Issued on 27 July 2020</b>	<b>Modification in the National Pandemic Measure Issued on 07 August 2020</b>
No.11	Public Transport- Port Moresby	Measures apply to the NCD and Central Province; no operation of public transport; taxis can operate so long as the driver wear mask or face covering and do not operate during curfew hours; private transportation may continue to operate but not limited to hotel and security transportation; these measures came into effect since 29 July 2020	No modification
<b>Number</b>	<b>Title</b>	<b>Scope of the National Pandemic Measure Issued on 04 August 2020</b>	<b>Modification in the National Pandemic Measure Issued on 07 August 2020</b>
No. 3	Domestic travel measures	Conditions for compliance of all domestic flights; no restriction of flights within PNG; non-restriction of travel by foot, vehicle and vessel between provinces; and roadblocks to be established when directed by Controller. Travellers shall have a valid reason to travel to and from Port Moresby, including: (1) students returning to their usual place of residence or returning to their educational institutions; (2) persons returning to their usual residence; (3) essential services; (4) seeking medical assistance and medical evacuation; and (5) emergency transport, including but not limited to repatriation of deceased persons. All airlines are required to implement the ICAO take off guidelines. A person or organization that allows a person to board an aircraft in breach of the requirements of all domestic flights shall be deemed to have committed an offence under the National Pandemic Act 2020.	No person may travel by aircraft from one province to another province in PNG, unless provided an exemption in writing by the Controller or his delegate. No domestic flight may occur from one province in PNG to another province in PNG, unless provided an exemption in writing. The following flights are exempted: cargo flights with no passengers and medivac flights.

## ANNEX B – COVID-19 Healthcare E-Learning Platform (CoHELP)

### CoHELP

#### COVID-19 Healthcare E-Learning Platform

How do we tackle COVID-19 in PNG health services?



#### Be prepared for COVID-19

The WHO (PNG) and PNG National Department of Health have partnered with the Australian Government (DFAT) to develop an essential online training program for healthcare workers in PNG to be prepared for an outbreak of COVID-19.

This training has been developed for both clinical and administrative staff across PNG. The training contains practical resources and scenario training that are tailored to the needs of PNG.

The entire platform can be accessed from your smartphone, tablet or computer. You will have access to:

- Recorded lectures
- Interactive trainings
- Practical resources
- Discussion forums
- Weekly live training seminars with Q&A's with expert lecturers
- Certification as you complete training modules

Topics include:

- Introduction to COVID-19
- Infection Control Basics
- Principles of outbreak control
- Infection Control Advanced
- Clinical Management Basics
- Clinical Management Advanced

- Emergency Department Management
- Adapting Essential Services
- Obstetrics and Gynaecology in COVID-19
- Adapting Child Health Services
- Critical Care during COVID-19
- Nursing theatre management
- Diagnostics and testing
- Interactive Scenarios

If not all the topics are relevant to you simply skip ahead and complete the modules that are useful to you. You will receive certification for each module you complete so you do not have to complete every module.

**To access the training all you have to do is sign up at <https://cohlp.learnbook.com.au/> by the 31st of July!**

From there you can get involved with all of the activities and use the resources on the platform. If, you are having issues signing up or would like more information on the program please email us. We can send you sign up instructions and give you an introduction to the platform.

Email: [cohlpadmin@johnstaff.com.au](mailto:cohlpadmin@johnstaff.com.au)

Don't miss out on this essential training promoted and developed by the National Department of Health and World Health Organisation (PNG).

**Get on the front foot with COVID-19, don't wait for an outbreak! Ask questions, learn and prepare now.**



The Covid- 19 E-Learning Platform (CoHELP) is brought to you by the Australian Government in partnership with the Government of Papua New Guinea and implemented by:



## ANNEX C – Provincial Updates

### New Guinea Islands Region

#### Autonomous Region of Bougainville

As of 26 July 2020

<b>Total Provincial Population (2020)</b>	344,162	
<b>COVID-19 Response Management</b>		
Established and functioning Provincial Control Centre	-	
Established and functioning Provincial Emergency Operations Centre	✓	
<b>Surveillance</b>		
Receiving alerts from rural health centres	✓	
Presence of provincial COVID-19 hotlines	✓	
No. of rapid response teams	3	
No. of contact tracing teams	3	
No. of quarantine teams	-	
<b>Laboratory and Waste Management</b>		
No. of available UTMs / total received	-	
No. of functioning GeneXpert machines	2 (Arawa & Buka)	
No. of available GeneXpert cartridges / total received	-	
No. of GeneXpert – trained staff	-	
No. of functioning biosafety cabinets	-	
No. of functioning incinerators	-	
<b>Health Facilities</b>		
	<b>No. of Facilities</b>	<b>No. of Beds</b>
Pre-triage sites	3 (Buka, Kieta & Arawa)	N/A
Quarantine facilities	1	28
Quarantine facilities (in progress)	1	12
Isolation facilities	1	8
Isolation facilities (in progress)	3	>4
ICU	-	-
ICU (in progress)	1 (Buka Hospital)	4
<b>Critical Care</b>		
No. of nurses trained in critical care	6	
No. of anaesthetists/anaesthetic scientific officer	0/3	
No. of functioning ventilators	-	
No. of functioning oxygen concentrators	-	

Staff Strength and Health Care Worker Training	Number	COVID-19 trained		
No. of doctors	10	-		
No. of nurses and midwives	94	-		
No. of health extension officers	3	-		
No. of community health workers	71	-		
<b>TOTAL</b>	<b>178</b>	<b>37</b>		
<b>PPE Supplies Received</b>				
	Received in April 2020	Received in May 2020	Received in June 2020	Stock on hand
N95 Masks	300	1,500	700	-
Surgical Masks	0	4,000	8,000	-
Goggles	0	200	200	-
Gloves	65,000	10,000	1,000	-
Gowns/Coveralls	180	0	160	-
<b>Finance</b>				
	Allocated (in PGK)	Expended (in PGK)		
DFAT	950,000	-		
MFAT	350,000	-		
WHO	26,420	-		
GoPNG	200,000	-		
Provincial funds	-	-		
HSIP	200,000	-		
<b>Accomplishments and activities</b>				
<ul style="list-style-type: none"><li>Development partners received training on COVID-19 and IEC materials for prevention of COVID-19 and access to health services.</li><li>Opening of Buka Market on 4 July with handwashing facilities at the entrance.</li></ul>				
<b>Challenges</b>				

## East New Britain

Date as of 2 August 2020

<b>Total Provincial Population (2020)</b>	375,875	
<b>COVID-19 Response Management</b>		
Established and functioning Provincial Control Centre	✓	
Established and functioning Provincial Emergency Operations Centre	✓	
<b>Surveillance</b>		
Receiving alerts from rural health centres	✓	
Presence of provincial COVID-19 hotlines	✓	
No. of rapid response teams	3 (Kokopo, Rabaul & Gazelle)	
No. of contact tracing teams	3	
No. of quarantine teams	3	
<b>Laboratory and Waste Management</b>		
No. of available UTMs / total received	50 / 1400	
No. of functioning GeneXpert machines	2	
No. of available GeneXpert cartridges / total received	45/50	
No. of GeneXpert – trained staff	5 (3 male, 2 female)	
No. of functioning biosafety cabinets	2	
No. of functioning incinerators	1	
<b>Health Facilities</b>		
	<b>No. of Facilities</b>	<b>No. of Beds</b>
Pre-triage sites	5 (Nonga hospital, Butuwin UC, Vunapope, Warangai & Kerevat)	N/A
Quarantine facilities	1 (Butuwin UC)	3
Quarantine facilities (in progress)	1 (Renovation of the Hunter Team Lodge)	36
Isolation facilities	1 (Butuwin UC)	5
Isolation facilities (in progress)	-	-
ICU	1	3
ICU (in progress)	-	-
<b>Critical Care</b>		
No. of nurses trained in critical care	16	
No. of anaesthetists/anaesthetic scientific officer	2/7	
No. of functioning ventilators	-	
No. of functioning oxygen concentrators	-	

Staff Strength and Health Care Worker Training		Number	COVID-19 trained	
No. of doctors		19	6	
No. of nurses and midwives		254	-	
No. of health extension officers		23	-	
No. of community health workers		257	-	
TOTAL		553	236	
PPE Supplies Received	Received in April 2020	Received in May 2020	Received in June 2020	Stock on hand
N95 Masks	1,500	1,500	0	500
Surgical Masks	0	4,000	16,000	7,800
Goggles	0	200	200	51
Gloves	55,600	8,000	1,000	42
Gowns/Coveralls	330	100	160	39
Finance	Allocated (in PGK)		Expended (in PGK)	
DFAT	950,000		-	
MFAT	350,000		-	
WHO	27,440		-	
GoPNG	200,000		200,000	
Provincial funds	2,500,000		-	
Others	-		-	
Accomplishments and activities (reporting period)				
<ul style="list-style-type: none"><li>A containerized health clinic arrived at Butuwin Health Centre for connection to main power and water as well as other light work for completion. This assistance is from the Government of Australian and NDoH.</li><li>ENB PHA received a donation of antibiotics and wheelchairs from Dame Sandra Lao and Tropicana Limited. The Donations were made to Nonga General Hospital, Saint Mary's Hospital and the Butuwin Health Centre on 30 July 2020.</li></ul>				
Challenges				

## Manus

Date as of 9 August 2020

<b>Total Provincial Population (2020)</b>	66,918	
<b>COVID-19 Response Management</b>		
Established and functioning Provincial Control Centre		✓
Established and functioning Provincial Emergency Operations Centre		✓
<b>Surveillance</b>		
Receiving alerts from rural health centres	-	
Presence of provincial COVID-19 hotlines		✓
No. of rapid response teams	2	
No. of contact tracing teams	2	
No. of quarantine teams	2	
<b>Laboratory and Waste Management</b>		
No. of available UTMs / total received	367	
No. of functioning GeneXpert machines	1 (Lorengau Hospital)	
No. of available GeneXpert cartridges / total received	49/50	
No. of GeneXpert – trained staff	-	
No. of functioning biosafety cabinets	-	
No. of functioning incinerators	1	
<b>Health Facilities</b>		
	<b>No. of Facilities</b>	<b>No. of Beds</b>
Pre-triage sites	0	N/A
Quarantine facilities	1	24
Quarantine facilities (in progress)	-	-
Isolation facilities	1	8
Isolation facilities (in progress)	-	-
ICU	1	2
ICU (in progress)	-	-
<b>Critical Care</b>		
No. of nurses trained in critical care	-	
No. of anaesthetists/anaesthetic scientific officer	0/1	
No. of functioning ventilators	-	
No. of functioning oxygen concentrators	-	

Staff Strength and Health Care Worker Training	Number	COVID-19 trained
No. of doctors	6	5
No. of nurses and midwives	64	-
No. of health extension officers	13	-
No. of community health workers	81	-
<b>TOTAL</b>	<b>164</b>	<b>89</b>

PPE Supplies Received	Received in April 2020	Received in May 2020	Received in June 2020	Stock on hand
N95 Masks	230	150	350	-
Surgical Masks	0	5,500	8,000	-
Goggles	0	200	262	-
Gloves	22,000	10,000	4,000	-
Gowns/Coveralls	210		60	-

Finance	Allocated (in PGK)	Expended (in PGK)
DFAT	450,000	-
MFAT	250,000	-
WHO	13,840	-
GoPNG	200,000	200,000
Provincial funds	1,000,000	400,000
HSIP	200,000	-

**Accomplishments and activities**

- Meetings held for Provincial Emergency Operations Centre twice a week on Tuesdays and Thursdays.
-

**Challenges**



## New Ireland

Date as of 9 August 2020

<b>Total Provincial Population (2020)</b>	218,472	
<b>COVID-19 Response Management</b>		
Established and functioning Provincial Control Centre		✓
Established and functioning Provincial Emergency Operations Centre		✓
<b>Surveillance</b>		
Receiving alerts from rural health centres		✓
Presence of provincial COVID-19 hotlines		✓
No. of rapid response teams	4 (2 in PHA/District & 2 in Lihir and Simberi)	
No. of contact tracing teams	4	
No. of quarantine teams	4	
<b>Laboratory and Waste Management</b>		
No. of available UTMs / total received	- / 240	
No. of functioning GeneXpert machines	2 (Kavieng Hospital & Lihir Medical Centre)	
No. of available GeneXpert cartridges / total received	50/50	
No. of GeneXpert – trained staff	5 (3 males, 2 females)	
No. of functioning biosafety cabinets	2	
No. of functioning incinerators	1	
<b>Health Facilities</b>		
	<b>No. of Facilities</b>	<b>No. of Beds</b>
Pre-triage sites	6	N/A
Quarantine facilities	1	-
Quarantine facilities (in progress)	-	-
Isolation facilities	1	6
Isolation facilities (in progress)	-	-
ICU	-	-
ICU (in progress)	-	-
<b>Critical Care</b>		
No. of nurses trained in critical care		8
No. of anaesthetists/anaesthetic scientific officer		0/2
No. of functioning ventilators		0
No. of functioning oxygen concentrators		00

Staff Strength and Health Care Worker Training	Number	COVID-19 trained
No. of doctors	16	4
No. of nurses and midwives	209	-
No. of health extension officers	31	-
No. of community health workers	192	-
<b>TOTAL</b>	<b>448</b>	<b>320</b>

PPE Supplies Received	Received in April 2020	Received in May 2020	Received in June 2020	Stock on hand
N95 Masks	280	1,500	0	-
Surgical Masks	0	4,000	2,000	-
Goggles	0	200	200	-
Gloves	18,000	8,000	1,000	-
Gowns/Coveralls	210	-	110	-

Finance	Allocated (in PGK)	Expended (in PGK)
DFAT	450,000	-
MFAT	250,000	-
WHO	23,360	-
GoPNG	200,000	-
Provincial funds	-	-
HSIP	200,000	-

<b>Accomplishments and activities</b>
<b>Challenges</b>



## West New Britain

As of 26 July 2020

<b>Total Provincial Population (2020)</b>	348,596	
<b>COVID-19 Response Management</b>		
Established and functioning Provincial Control Centre	-	
Established and functioning Provincial Emergency Operations Centre	✓	
<b>Surveillance</b>		
Receiving alerts from rural health centres	-	
Presence of provincial COVID-19 hotlines	✓	
No. of rapid response teams	2	
No. of contact tracing teams	2	
No. of quarantine teams	2	
<b>Laboratory and Waste Management</b>		
No. of available UTMs / total received	- / 260	
No. of functioning GeneXpert machines	2 (Kimbe Hospital & Biala District Hospital)	
No. of available GeneXpert cartridges / total received	50/50	
No. of GeneXpert – trained staff	-	
No. of functioning biosafety cabinets	-	
No. of functioning incinerators	-	
<b>Health Facilities</b>		
	<b>No. of Facilities</b>	<b>No. of Beds</b>
Pre-triage sites	3 (Town Urban Clinic, Kimbe Hospital & Mutuvel Sporting Stadium)	N/A
Quarantine facilities	-	-
Quarantine facilities (in progress)	1 (Mutuvel Sporting Stadium)	-
Isolation facilities	1	3
Isolation facilities (in progress)	1	6
ICU	1	1
ICU (in progress)	1	2
<b>Critical Care</b>		
No. of nurses trained in critical care	6	
No. of anaesthetists/anaesthetic scientific officer	0/2	
No. of functioning ventilators	-	
No. of functioning oxygen concentrators	-	

Staff Strength and Health Care Worker	Number	COVID-19 trained
No. of doctors	15	-
No. of nurses and midwives	171	-
No. of health extension officers	52	-
No. of community health workers	247	-
<b>TOTAL</b>	<b>485</b>	<b>328</b>

PPE Supplies Received	Received in April 2020	Received in May 2020	Received in June 2020	Stock on hand
N95 Masks	180	1,500	0	-
Surgical Masks	0	4,000	10,000	-
Goggles	0	200	200	-
Gloves	30,000	10,000	1,000	-
Gowns/Coveralls	180	0	10	-

Finance	Allocated (in PGK)	Expended (in PGK)
DFAT	450,000	-
MFAT	350,000	-
WHO	22,680	-
GoPNG	200,000	-
Provincial funds	600,000	-
HSIP	200,000	-

<b>Accomplishments and activities</b>
<b>Challenges</b>

## Momase Region

### East Sepik

As of 26 July 2020

<b>Total Provincial Population (2020)</b>	644,053	
<b>COVID-19 Response Management</b>		
Established and functioning Provincial Control Centre		-
Established and functioning Provincial Emergency Operations Centre		✓
<b>Surveillance</b>		
Receiving alerts from rural health centres		✓
Presence of provincial COVID-19 hotlines		✓
No. of rapid response teams		1
No. of contact tracing teams		1
No. of quarantine teams		1
<b>Laboratory and Waste Management</b>		
No. of available UTMs / total received		- / 400
No. of functioning GeneXpert machines	2 (Boram & Maprik)	
No. of available GeneXpert cartridges / total received		- / 50
No. of GeneXpert – trained staff		2
No. of functioning biosafety cabinets		-
No. of functioning incinerators		-
<b>Health Facilities</b>		
	<b>No. of Facilities</b>	<b>No. of Beds</b>
Pre-triage sites	8 (Town Urban Clinic, At the districts with 7 tents & 1 for Boram Hospital)	N/A
Quarantine facilities	-	-
Quarantine facilities (in progress)	1 (Guest house)	-
Isolation facilities	1 (Old TB clinic refurbished)	-
Isolation facilities (in progress)	1 (Moem Barracks)	-
ICU	-	-
ICU (in progress)	1 (at the Hospital)	-
<b>Critical Care</b>		
No. of nurses trained in critical care		14
No. of anaesthetists/anaesthetic scientific officer		1/3
No. of functioning ventilators		-
No. of functioning oxygen concentrators		-

Staff Strength and Health Care Worker Training	Number	COVID-19 trained
No. of doctors	17	-
No. of nurses and midwives	158	-
No. of health extension officers	21	-
No. of community health workers	243	-
<b>TOTAL</b>	<b>439</b>	<b>92</b>

PPE Supplies Received	Received in April 2020	Received in May 2020	Received in June 2020	Stock on hand
N95 Masks	60	1,500	0	60
Surgical Masks	0	4,000	4,000	14,300
Goggles	0	200	200	185
Gloves	26,000	10,000	1,000	20,900
Gowns/Coveralls	180		10	991

Finance	Allocated (in PGK)	Expended (in PGK)
DFAT	950,000	-
MFAT	350,000	-
WHO	37,640	-
GoPNG	200,000	200,000
Provincial funds	-	-
Others	-	-

Accomplishments and activities
--------------------------------

Challenges
------------

## Madang

As of 2 August 2020

<b>Total Provincial Population (2020)</b>	719,869	
<b>COVID-19 Response Management</b>		
Established and functioning Provincial Control Centre	-	
Established and functioning Provincial Emergency Operations Centre	✓	
<b>Surveillance</b>		
Receiving alerts from rural health centres	-	
Presence of provincial COVID-19 hotlines	✓	
No. of rapid response teams	2	
No. of contact tracing teams	1	
No. of quarantine teams	1	
<b>Laboratory and Waste Management</b>		
No. of available UTMs / total received	- / 260	
No. of functioning GeneXpert machines	4 (Modilon Hospital 2, Gaubin 1 and Malala Health Centre 1)	
No. of available GeneXpert cartridges / total received	- / 50	
No. of GeneXpert – trained staff	2	
No. of functioning biosafety cabinets	-	
No. of functioning incinerators	-	
<b>Health Facilities</b>		
	<b>No. of Facilities</b>	<b>No. of Beds</b>
Pre-triage sites	1	N/A
Quarantine facilities	1 (Modilon Hospital)	12
Quarantine facilities (in progress)	1	-
Isolation facilities	1 (Yaguum Hospital)	18
Isolation facilities (in progress)	1	-
ICU	1	5
ICU (in progress)	-	-
<b>Critical Care</b>		
No. of nurses trained in critical care	3	
No. of anaesthetists/anaesthetic scientific officer	1/3	
No. of functioning ventilators	-	
No. of functioning oxygen concentrators	-	

Staff Strength and Health Care Worker Training	Number	COVID-19 trained
No. of doctors	22	-
No. of nurses and midwives	223	-
No. of health extension officers	28	-
No. of community health workers	390	-
<b>TOTAL</b>	<b>663</b>	<b>346</b>

PPE Supplies Received	Received in April 2020	Received in May 2020	Received in June 2020	Stock on hand
N95 Masks	180	1,500	0	-
Surgical Masks	0	4,000	12,000	-
Goggles	0	200	200	-
Gloves	18,000	5,000	1,000	-
Gowns/Coveralls	15	0	10	-

Finance	Allocated (in PGK)	Expended (in PGK)
DFAT	950,000	-
MFAT	170,000	-
WHO	37,640	-
GoPNG	200,000	-
Provincial funds	-	-
Others	-	-

### Accomplishments and activities (reporting period)

- Had our point of entry procedures rectified and emergency cases to be given prompt attention at hospital.
- Set up an isolation point-of-care area for COVID-19 cases outside of the hospital area.
- Set up isolation facility for COVID-19 case management, including OT services and O&G services.
- Clinical pathways to be drawn and made clear to all health workforce
- Infection prevention and control measures and protocols to be stringent and put into place for all to comply with.
- Surveillance, rapid response and risk assessment to continue daily with reporting
- Command Centre to be rectified and supported.
- Budget breakup of DFAT fund needs to be reviewed.

### Challenges

## Morobe

Date as of 9 August 2020

<b>Total Provincial Population (2020)</b>	926,432	
<b>COVID-19 Response Management</b>		
Established and functioning Provincial Control Centre	-	
Established and functioning Provincial Emergency Operations Centre	✓	
<b>Surveillance</b>		
Receiving alerts from rural health centres	-	
Presence of provincial COVID-19 hotlines	✓	
No. of rapid response teams	2	
No. of contact tracing teams	2	
No. of quarantine teams	2	
<b>Laboratory and Waste Management</b>		
No. of available U/TMs / total received	210/ 460	
No. of functioning GeneXpert machines	5 (2 in Angau Hospital, 1 in Bulolo, 1 in Haicost & 1 in Mutzing)	
No. of available GeneXpert cartridges / total received	48/ 85	
No. of GeneXpert – trained staff	-	
No. of functioning biosafety cabinets	-	
No. of functioning incinerators	-	
<b>Health Facilities</b>		
<b>Pre-triage sites</b>	<b>No. of Facilities</b> >6 (Milfordhaven Urban Clinic, Buimo Urban Clinic, Lae International Hospital, GM Flores Hospital, Igam Barracks, Morobe District Hospitals and health centres, Morobe)	<b>No. of Beds</b> N/A
Quarantine facilities	3	47 (12 in 11-Mile (MKW), 32 in Morobe District & 3 in Bulolo District)
Quarantine facilities (in progress)	-	-
Isolation facilities	2 (St Ignatius Kilage Stadium & Bulolo District)	>120
Isolation facilities (in progress)	1	8
ICU	2 (St Ignatius Kilage Stadium & Bulolo District)	19
ICU (in progress)	-	-

Critical Care				
No. of nurses trained in critical care		30		
No. of anaesthetists/anaesthetic scientific officer		4/2		
No. of functioning ventilators		-		
No. of functioning oxygen concentrators		-		
Staff Strength and Health Care Worker Training	Number	COVID-19 trained		
No. of doctors	48	-		
No. of nurses and midwives	443	-		
No. of health extension officers	11	-		
No. of community health workers	143	-		
TOTAL	645	425		
PPE Supplies Received	Received in April 2020	Received in May 2020	Received in June 2020	Stock on hand
N95 Masks	420	1,500	0	500
Surgical Masks	0	4,000	17,100	5000
Goggles	0	200	200	50
Gloves	37,000	5,000	2,000	3,300
Gowns/Coveralls	240	0	20	700
Finance	Allocated (in PGK)	Expended (in PGK)		
DFAT	1,900,000	-		
MFAT	170,000	-		
WHO	46,820	-		
GoPNG	200,000	-		
Provincial funds	-	-		
Others	-	-		
Accomplishments and activities				
<ul style="list-style-type: none"><li>Morobe PHA met the District Health managers from all Morobe Districts and several District administrators to provide COVID-19 updates. The districts reported the development of SOPs and set up space for case management for COVID-19.</li><li>District health teams also placed at point of entry at seaports, Nadzab, Mutzing and Bulolo Airport.</li><li>Procurement has done for Morobe COVID-19 hospital (St Ignatius Kilage Stadium) and the facility is equipped. This weekend (25 &amp; 26 July), the clinical team and the corporate service team will complete preparations and the facility will be operational from the week of 27 July.</li><li>Morobe PHA encourages the community to immunize children under five years old for routine immunization.</li></ul>				
Challenges				



## Sandaun

As of 2 August 2020

<b>Total Provincial Population (2020)</b>	316,533	
<b>COVID-19 Response Management</b>		
Established and functioning Provincial Control Centre	-	
Established and functioning Provincial Emergency Operations Centre	✓	
<b>Surveillance</b>		
Receiving alerts from rural health centres	✓	
Presence of provincial COVID-19 hotlines	✓	
No. of rapid response teams	1	
No. of contact tracing teams	1	
No. of quarantine teams	1	
<b>Laboratory and Waste Management</b>		
No. of available UTMs / total received	- / 400	
No. of functioning GeneXpert machines	2 (Raihu District Hospital and Vanimo Hospital)	
No. of available GeneXpert cartridges / total received	- / 50	
No. of GeneXpert – trained staff	-	
No. of functioning biosafety cabinets	-	
No. of functioning incinerators	-	
<b>Health Facilities</b>		
	<b>No. of Facilities</b>	<b>No. of Beds</b>
Pre-triage sites	4	N/A
Quarantine facilities	-	-
Quarantine facilities (in progress)	1 (Weather Service)	13
Isolation facilities	1	4
Isolation facilities (in progress)	2	-
ICU	0	0
ICU (in progress)	-	-
<b>Critical Care</b>		
No. of nurses trained in critical care	7	
No. of anaesthetists/anaesthetic scientific officer	- / 2	
No. of functioning ventilators	-	
No. of functioning oxygen concentrators	-	

Staff Strength and Health Care Worker Training	Number	COVID-19 trained
No. of doctors	10	-
No. of nurses and midwives	119	-
No. of health extension officers	19	-
No. of community health workers	332	-
<b>TOTAL</b>	<b>480</b>	<b>200</b>

PPE Supplies Received	Received in April 2020	Received in May 2020	Received in June 2020	Stock on hand
N95 Masks	60	1,500	120	1,547
Surgical Masks	0	4,000	4,000	4,720
Goggles	0	200	200	286
Gloves	26,000	10,000	1,000	1,141
Gowns/Coveralls	180	0	310	469/53

Finance *	Allocated (in PGK)	Expended (in PGK)
DFAT	950,000	-
MFAT	350,000	-
WHO	29,480	-
GoPNG	200,000	200,000
DPLGA	100,000	-
Sandaun Provincial Government	25,000	-
WSPHA Trust Account	400,000	400,000
WSPHA- 252 (HFG)	200,000	-

\* About 50% of budget planned on average.

### Accomplishments and activities

- Referral pathway has been identified, with mild and moderate cases planning to be treated at the local health facilities and severe cases at SPH isolation unit.
- WSPHA looks for available facilities as isolation facilities in response to potential increase in COVID-19 cases in the province.
- Awareness on COVID-19 was done at Sandaun Provincial Assembly on 28 July 2020.
- Stockpile of PPE is in the WSPHA PEOC PPE room.

### Challenges

- Continuing surveillance with increased movement of people at the point of entry from Green River to Wutung.
- Continuing ongoing surveillance, following-up with ILI triaging at POE health facilities, and monitoring suspected cases of AFR and ILI/SARI at Bewani HC in the Vanimo Green District.
- Medical equipment identified for the isolation unit are still to be purchased such as ventilators.

## Highlands Region

### Eastern Highlands

As of 26 July 2020

<b>Total Provincial Population (2020)</b>	717,957	
<b>COVID-19 Response Management</b>		
Established and functioning Provincial Control Centre	-	
Established and functioning Provincial Emergency Operations Centre	✓	
<b>Surveillance</b>		
Receiving alerts from rural health centres	-	
Presence of provincial COVID-19 hotlines	✓	
No. of rapid response teams	2	
No. of contact tracing teams	-	
No. of quarantine teams	-	
<b>Laboratory and Waste Management</b>		
No. of available UTMs / total received	- / 240	
No. of functioning GeneXpert machines	4 (3 in Highlands Provincial & 1 in Kainantu District Hospital)	
No. of available GeneXpert cartridges / total received	- / 50	
No. of GeneXpert – trained staff	-	
No. of functioning biosafety cabinets	-	
No. of functioning incinerators	-	
<b>Health Facilities</b>		
	<b>No. of Facilities</b>	<b>No. of Beds</b>
Pre-triage sites	1	N/A
Quarantine facilities	1 (Goroka Hospital)	14
Quarantine facilities (in progress)	1 (at pediatric ward)	16-18
Isolation facilities	1	5
Isolation facilities (in progress)	1	6
ICU	1 (Goroka Hospital)	12
ICU (in progress)	-	-
<b>Critical Care</b>		
No. of nurses trained in critical care	60	
No. of anaesthetists/anaesthetic scientific officer	3/9	
No. of functioning ventilators	-	
No. of functioning oxygen concentrators	-	

<b>Staff Strength and Health Care Worker</b>	<b>Number</b>	<b>COVID-19 trained</b>
<b>Training</b>		
No. of doctors	28	-
No. of nurses and midwives	222	-
No. of health extension officers	15	-
No. of community health workers	371	-
<b>TOTAL</b>	<b>636</b>	<b>114</b>

<b>PPE Supplies Received</b>	<b>Received in April 2020</b>	<b>Received in May 2020</b>	<b>Received in June 2020</b>	<b>Stock on hand</b>
N95 Masks	230	1,500	0	-
Surgical Masks	0	4,000	25,600	-
Goggles	0	200	200	-
Gloves	36,000	10,000	1,000	-
Gowns/Coveralls	150	0	10	-

<b>Finance</b>	<b>Allocated (in PGK)</b>	<b>Expended (in PGK)</b>
DFAT	950,000	-
MFAT	210,000	-
WHO	38,320	-
GoPNG	200,000	-
Provincial funds	2,500,000	-
Others	-	-

<b>Accomplishments and activities</b>
---------------------------------------

<b>Challenges</b>
-------------------



## Enga

As of 26 July 2020

<b>Total Provincial Population (2020)</b>	480,691	
<b>COVID-19 Response Management</b>		
Established and functioning Provincial Control Centre		-
Established and functioning Provincial Emergency Operations Centre		✓
<b>Surveillance</b>		
Receiving alerts from rural health centres		-
Presence of provincial COVID-19 hotlines		-
No. of rapid response teams		-
No. of contact tracing teams		-
No. of quarantine teams		-
<b>Laboratory and Waste Management</b>		
No. of available UTMs / total received		-/ 240
No. of functioning GeneXpert machines	2 (Kompiam District Hospital and Wabag Provincial Hospital)	
No. of available GeneXpert cartridges / total received		-/ 50
No. of GeneXpert – trained staff		-
No. of functioning biosafety cabinets		-
No. of functioning incinerators		-
<b>Health Facilities</b>		
	<b>No. of Facilities</b>	<b>No. of Beds</b>
Pre-triage sites	1 (Wabag Hospital)	N/A
Quarantine facilities	-	-
Quarantine facilities (in progress)	-	-
Isolation facilities	-	-
Isolation facilities (in progress)	1 (Pausa in Wapenamanda)	-
ICU	-	-
ICU (in progress)	-	-
<b>Critical Care</b>		
No. of nurses trained in critical care		8
No. of anaesthetists/anaesthetic scientific officer		-/ 5
No. of functioning ventilators		-
No. of functioning oxygen concentrators		-

Staff Strength and Health Care Worker Training	Number	COVID-19 trained		
No. of doctors	21	-		
No. of nurses and midwives	163	-		
No. of health extension officers	18	-		
No. of community health workers	226	-		
TOTAL	428	132		
PPE Supplies Received	Received in April 2020	Received in May 2020	Received in June 2020	Stock on hand
N95 Masks	150	1,500	0	-
Surgical Masks	0	4,000	4,000	-
Goggles	0	200	200	-
Gloves	18,000	10,000	1,000	-
Gowns/Coveralls	150	0	460	-
Finance	Allocated (in PGK)	Expended (in PGK)		
DFAT	450,000	-		
MFAT	210,000	-		
WHO	31,520	-		
GoPNG	200,000	-		
Provincial funds	-	-		
Others	-	-		
Accomplishments and activities				
Challenges				

## Hela

As of 26 July 2020

<b>Total Provincial Population (2020)</b>	304,955	
<b>COVID-19 Response Management</b>		
Established and functioning Provincial Control Centre		-
Established and functioning Provincial Emergency Operations Centre		✓
<b>Surveillance</b>		
Receiving alerts from rural health centres		✓
Presence of provincial COVID-19 hotlines		✓
No. of rapid response teams		1
No. of contact tracing teams		-
No. of quarantine teams		-
<b>Laboratory and Waste Management</b>		
No. of available UTMs / total received		- / 50
No. of functioning GeneXpert machines		1 (Hela Provincial Hospital)
No. of available GeneXpert cartridges / total received		- / 50
No. of GeneXpert – trained staff		-
No. of functioning biosafety cabinets		-
No. of functioning incinerators		-
<b>Health Facilities</b>		
	<b>No. of Facilities</b>	<b>No. of Beds</b>
Pre-triage sites	1 (Hela Provincial Hospital)	N/A
Quarantine facilities	3	-
Quarantine facilities (in progress)	1	-
Isolation facilities	3	>6
Isolation facilities (in progress)	7	-
ICU	1	6
ICU (in progress)	-	-
<b>Critical Care</b>		
No. of nurses trained in critical care		8
No. of anaesthetists/anaesthetic scientific officer		- / 5
No. of functioning ventilators		-
No. of functioning oxygen concentrators		-

Staff Strength and Health Care Worker Training	Number	COVID-19 trained
No. of doctors	2	-
No. of nurses and midwives	52	-
No. of health extension officers	8	-
No. of community health workers	45	-
<b>TOTAL</b>	<b>107</b>	<b>81</b>

PPE Supplies Received	Received in April 2020	Received in May 2020	Received in June 2020	Stock on hand
N95 Masks	300	1,500	-	-
Surgical Masks	0	4,000	4,000	-
Goggles	0	200	200	-
Gloves	16,000	10,000	1,000	-
Gowns/Coveralls	80	0	160	-

Finance	Allocated (in PGK)	Expended (in PGK)
DFAT	450,000	-
MFAT	350,000	-
WHO	24,720	-
GoPNG	200,000	-
Provincial funds	424,000	-
Others**	300,000	-

\*\*TARI PORI DOA DSP & Kororo Margorima DOA DSP

<b>Accomplishments and activities</b>
<b>Challenges</b>

## Jiwaka

as of 26 July 2020

<b>Total Provincial Population (2020)</b>	332,619	
<b>COVID-19 Response Management</b>		
Established and functioning Provincial Control Centre	-	
Established and functioning Provincial Emergency Operations Centre	-	
<b>Surveillance</b>		
Receiving alerts from rural health centres	-	
Presence of provincial COVID-19 hotlines	-	
No. of rapid response teams	-	
No. of contact tracing teams	-	
No. of quarantine teams	-	
<b>Laboratory and Waste Management</b>		
No. of available UTMs / total received	- / 250	
No. of functioning GeneXpert machines	1 (Kudjib Nazarene Hospital)	
No. of available GeneXpert cartridges / total received	- / 50	
No. of GeneXpert – trained staff	-	
No. of functioning biosafety cabinets	-	
No. of functioning incinerators	-	
<b>Health Facilities</b>		
	<b>No. of Facilities</b>	<b>No. of Beds</b>
Pre-triage sites	-	N/A
Quarantine facilities	1 (Kindeng)	-
Quarantine facilities (in progress)	-	-
Isolation facilities	4 (Kindeng, Minj HC, Kol HC, Tabibuga HC)	-
Isolation facilities (in progress)	-	-
ICU	-	-
ICU (in progress)	-	-
<b>Critical Care</b>		
No. of nurses trained in critical care	1	
No. of anaesthetists/anaesthetic scientific officer	- / 4	
No. of functioning ventilators	-	
No. of functioning oxygen concentrators	-	

Staff Strength and Health Care Worker Training	Number	COVID-19 trained		
No. of doctors	1	-		
No. of nurses and midwives	146	-		
No. of health extension officers	8	-		
No. of community health workers	102	-		
<b>TOTAL</b>	<b>257</b>	<b>73</b>		
<b>PPE Supplies Received</b>	<b>Received in April 2020</b>	<b>Received in May 2020</b>	<b>Received in June 2020</b>	<b>Stock on hand</b>
N95 Masks	180	1,500	0	-
Surgical Masks	0	4,000	4,000	-
Goggles	0	200	200	-
Gloves	18,000	10,000	1,000	-
Gowns/Coveralls	150	0	310	-
<b>Finance</b>	<b>Allocated (in PGK)</b>	<b>Expended (in PGK)</b>		
DFAT	450,000	-		
MFAT	300,000	-		
WHO	23,700	-		
GoPNG	200,000	-		
Provincial funds	-	-		
Others	-	-		
<b>Accomplishments and activities</b>				
<b>Challenges</b>				

## Simbu

As of 2 August 2020

<b>Total Provincial Population (2020)</b>	378,381	
<b>COVID-19 Response Management</b>		
Established and functioning Provincial Control Centre		-
Established and functioning Provincial Emergency Operations Centre		✓
<b>Surveillance</b>		
Receiving alerts from rural health centres		✓
Presence of provincial COVID-19 hotlines		-
No. of rapid response teams		1
No. of contact tracing teams		1
No. of quarantine teams		-
<b>Laboratory and Waste Management</b>		
No. of available UTMs / total received		-/ 240
No. of functioning GeneXpert machines	2 (Mingende Rural Hospital & Kundawa General Hospital)	
No. of available GeneXpert cartridges / total received		-/ 50
No. of GeneXpert – trained staff		-
No. of functioning biosafety cabinets		-
No. of functioning incinerators		-
<b>Health Facilities</b>		
	<b>No. of Facilities</b>	<b>No. of Beds</b>
Pre-triage sites	-	N/A
Quarantine facilities	-	-
Quarantine facilities (in progress)	-	-
Isolation facilities	-	-
Isolation facilities (in progress)	-	-
ICU	1	3
ICU (in progress)	-	-
<b>Critical Care</b>		
No. of nurses trained in critical care		6
No. of anaesthetists/anaesthetic scientific officer		-/ 4
No. of functioning ventilators		-
No. of functioning oxygen concentrators		-

<b>Staff Strength and Health Care Worker Training</b>	<b>Number</b>	<b>COVID-19 trained</b>
No. of doctors	30	-
No. of nurses and midwives	305	-
No. of health extension officers	15	-
No. of community health workers	197	-
<b>TOTAL</b>	<b>547</b>	<b>-</b>

<b>PPE Supplies Received</b>	<b>Received in April 2020</b>	<b>Received in May 2020</b>	<b>Received in June 2020</b>	<b>Stock on hand *</b>
N95 Masks	180	1,500	-	7650
Surgical Masks	0	4,000	4,000	150
Goggles	0	200	200	2
Gloves	12,000	10,000	1,000	22,800
Gowns/Coveralls	180	0	360	225

\*Updated on 5 May 2020

<b>Finance</b>	<b>Allocated (in PGK)</b>	<b>Expended (in PGK)</b>
DFAT	450,000	-
MFAT	350,000	-
WHO	33,560	-
GoPNG	200,000	200,000
Provincial funds	-	-
Others	-	-

<b>Accomplishments and activities</b>
<b>Challenges</b>

## Southern Highlands

As of 26 July 2020

<b>Total Provincial Population (2020)</b>	651,001	
<b>COVID-19 Response Management</b>		
Established and functioning Provincial Control Centre	-	
Established and functioning Provincial Emergency Operations Centre	✓	
<b>Surveillance</b>		
Receiving alerts from rural health centres	✓	
Presence of provincial COVID-19 hotlines	-	
No. of rapid response teams	1	
No. of contact tracing teams	5	
No. of quarantine teams	5	
<b>Laboratory and Waste Management</b>		
No. of available UTMs / total received	- / 40	
No. of functioning GeneXpert machines	2 (Mendi Provincial Hospital and Ialibu District Hospital)	
No. of available GeneXpert cartridges / total received	- / 50	
No. of GeneXpert – trained staff	40	
No. of functioning biosafety cabinets	-	
No. of functioning incinerators	-	
<b>Health Facilities</b>		
	<b>No. of Facilities</b>	<b>No. of Beds</b>
Pre-triage sites	3	N/A
Quarantine facilities	1 (Kiburu Lodge)	10
Quarantine facilities (in progress)	1	-
Isolation facilities	-	-
Isolation facilities (in progress)	2 (MDR-TB Isolation Ward & Munihui HC)	-
ICU	1	6
ICU (in progress)	-	-

Critical Care				
No. of nurses trained in critical care				9
No. of anaesthetists/anaesthetic scientific officer				-/ 5
No. of functioning ventilators				-
No. of functioning oxygen concentrators				-
Staff Strength and Health Care Worker Training		Number	COVID-19 trained	
No. of doctors		18		-
No. of nurses and midwives		151		-
No. of health extension officers		10		-
No. of community health workers		189		-
<b>TOTAL</b>		<b>368</b>		<b>367</b>
PPE Supplies Received	Received in April 2020	Received in May 2020	Received in June 2020	Stock on hand
N95 Masks	250	1,500	-	-
Surgical Masks	0	4,000	4,000	-
Goggles	0	200	200	-
Gloves	37,000	8,000	1,000	-
Gowns/Coveralls	180	0	410	-
Finance		Allocated (in PGK)	Expended (in PGK)	
DFAT		450,000		-
MFAT		350,000		-
WHO		34,240		-
GoPNG		200,000		-
Provincial funds		500,000		-
Others		-		-
Accomplishments and activities				
Challenges				



## Western Highlands

Date as of 9 August 2020

<b>Total Provincial Population (2020)</b>	442,638	
<b>COVID-19 Response Management</b>		
Established and functioning Provincial Control Centre		✓
Established and functioning Provincial Emergency Operations Centre		✓
<b>Surveillance</b>		
Receiving alerts from rural health centres		✓
Presence of provincial COVID-19 hotlines		✗
No. of rapid response teams	1 (3 persons)	
No. of contact tracing teams	1 (2 persons)	
No. of quarantine teams	1 (5 persons)	
<b>Laboratory and Waste Management</b>		
No. of available UTMs / total received	400/ 400	
No. of functioning GeneXpert machines	1 (MHH)	
No. of available GeneXpert cartridges / total received	46	
No. of GeneXpert – trained staff	2 (1 Male, 1 Female)	
No. of functioning biosafety cabinets	1	
No. of functioning incinerators	1 (needs urgent replacement)	
<b>Health Facilities</b>		
	<b>No. of Facilities</b>	<b>No. of Beds</b>
Pre-triage sites	4	N/A
Quarantine facilities	1	10
Quarantine facilities (in progress)	1	10
Isolation facilities	1	11
Isolation facilities (in progress)	-	-
ICU	1	4
ICU (in progress)	0	0
<b>Critical Care</b>		
No. of nurses trained in critical care		30
No. of anaesthetists/anaesthetic scientific officer		5 ATOs
No. of functioning ventilators		1
No. of functioning oxygen concentrators		7

Staff Strength and Health Care Worker	Number	COVID-19 trained
<b>Training</b>		
No. of doctors	22	5
No. of nurses and midwives	13	55
No. of health extension officers	217	2
No. of community health workers	293	50
<b>TOTAL</b>	<b>545</b>	<b>112</b>

PPE Supplies Received	Received in April 2020	Received in May 2020	Received in June 2020	Stock on hand
N95 Masks	100	1,500	7,000	325
Surgical Masks	0	4,000	20,000	80
Goggles	0	200	267	483
Gloves	11,000	10,000	3,000	75,000
Gowns/Coveralls	90	0	610	55

Finance	Allocated (in PGK)	Expended (in PGK)
DFAT	1,900,000	870,000
MFAT	170,000	-
WHO	29,480	29,480
GoPNG	200,000	200,000
Provincial funds	200,000	200,000
Others	-	-

### Accomplishments and activities

- Rolling out rural COVID response plan, subject to release of additional provincial or GoPNG funds. NZ funds fully committed – expenditure in progress.
- Tenders for concrete and in ground works for quarantine shed closed on 24 July 2020.
- Isolation unit in a converted chapel is ready at MHH, including one (1) delivery room although awaiting to handwashing tubs.
- Quarantine beds are ready, including one (1) delivery room.
- Quarantine facility is available with 10-bed capacity, but no funds to purchase beds and WH PHA is looking for old beds.

### Challenges

- The forms are not filled by travellers or no forms provided.
- There were some people who had low grade fever
- Financial shortfalls
- PPEs



## Southern Region

### Central

Date as of 9 August 2020

<b>Total Provincial Population (2020)</b>	317,847	
<b>COVID-19 Response Management</b>		
Established and functioning Provincial Control Centre	-	
Established and functioning Provincial Emergency Operations Centre	✓	
<b>Surveillance</b>		
Receiving alerts from rural health centres	✓	
Presence of provincial COVID-19 hotlines	✓	
No. of rapid response teams	1	
No. of contact tracing teams	-	
No. of quarantine teams	-	
<b>Laboratory and Waste Management</b>		
No. of available UTMs / total received	20 / 40	
No. of functioning GeneXpert machines	1 (Bereina District Hospital)	
No. of available GeneXpert cartridges / total received	20 / 20	
No. of GeneXpert – trained staff	-	
No. of functioning biosafety cabinets	1	
No. of functioning incinerators	-	
<b>Health Facilities</b>		
	<b>No. of Facilities</b>	<b>No. of Beds</b>
Pre-triage sites	4 (Abau District Hospital, Bereina District Hospital, Kwikila District Hospital and Verfa'a Hospital)	N/A
Quarantine facilities	-	-
Quarantine facilities (in progress)	1 (Bereina District Hospital)	-
Isolation facilities	-	-
Isolation facilities (in progress)	2 (Abau District Hospital & Bereina District Hospital)	-
ICU	-	-
ICU (in progress)	-	-

<b>Critical Care</b>				
No. of nurses trained in critical care				9
No. of anaesthetists/anaesthetic scientific officer				-/ 5
No. of functioning ventilators				-
No. of functioning oxygen concentrators				-
<b>Staff Strength and Health Care Worker Training</b>				
	<b>Number</b>			<b>COVID-19 trained</b>
No. of doctors	0			-
No. of nurses and midwives	13			-
No. of health extension officers	35			-
No. of community health workers	198			-
<b>TOTAL</b>	<b>246</b>			<b>276</b>
<b>PPE Supplies Received</b>				
	<b>Received in April 2020</b>	<b>Received in May 2020</b>	<b>Received in June 2020</b>	<b>Stock on hand</b>
N95 Masks	230	1,500	420	-
Surgical Masks	0	5,000	2,200	-
Goggles	0	200	210	-
Gloves	27,000	13,000	2,000	-
Gowns/Coveralls	210	30	450	-
<b>Finance</b>				
	<b>Allocated (in PGK)</b>		<b>Expended (in PGK)</b>	
DFAT	450,000		-	
MFAT	170,000		-	
WHO	32,880		-	
GoPNG	200,000		200,000	
Provincial funds	-		-	
Others	-		-	
<b>Accomplishments and activities</b>				
<b>Challenges</b>				

## Gulf

As of 26 July 2020

<b>Total Provincial Population (2020)</b>	190,153	
<b>COVID-19 Response Management</b>		
Established and functioning Provincial Control Centre	-	
Established and functioning Provincial Emergency Operations Centre	✓	
<b>Surveillance</b>		
Receiving alerts from rural health centres	✓	
Presence of provincial COVID-19 hotlines	✓	
No. of rapid response teams	-	
No. of contact tracing teams	-	
No. of quarantine teams	-	
<b>Laboratory and Waste Management</b>		
No. of available UTMs / total received	- / 230	
No. of functioning GeneXpert machines	3 (Kerema Provincial Hospital, Kapuna Rural Hospital & Kikori District Hospital)	
No. of available GeneXpert cartridges / total received	- / 30	
No. of GeneXpert – trained staff	-	
No. of functioning biosafety cabinets	-	
No. of functioning incinerators	-	
<b>Health Facilities</b>		
<b>No. of Facilities</b>	<b>No. of Beds</b>	
Pre-triage sites	1 (Kerema Hospital)	N/A
Quarantine facilities	-	
Quarantine facilities (in progress)	3 (Kororua, Kerema & Kikori)	-
Isolation facilities	1	-
Isolation facilities (in progress)	-	-
ICU	-	-
ICU (in progress)	-	-

<b>Critical Care</b>				
No. of nurses trained in critical care				1
No. of anaesthetists/anaesthetic scientific officer				- / 2
No. of functioning ventilators				-
No. of functioning oxygen concentrators				-
<b>Staff Strength and Health Care Worker Training</b>				
	<b>Number</b>			<b>COVID-19 trained</b>
No. of doctors	6			-
No. of nurses and midwives	48			-
No. of health extension officers	8			-
No. of community health workers	88			-
<b>TOTAL</b>	<b>150</b>			<b>30</b>
<b>PPE Supplies Received</b>				
	<b>Received in April 2020</b>	<b>Received in May 2020</b>	<b>Received in June 2020</b>	<b>Stock on hand</b>
N95 Masks	180	1,500	700	-
Surgical Masks	0	8,100	6,500	-
Goggles	0	200	220	-
Gloves	15,000	10,000	5,000	-
Gowns/Coveralls	180	20	656	-
<b>Finance</b>				
	<b>Allocated (in PGK)</b>		<b>Expended (in PGK)</b>	
DFAT	450,000		-	
MFAT	350,000		-	
WHO	18,940		-	
GoPNG	200,000		200,000	
Provincial funds	-		-	
Others	-		-	
<b>Accomplishments and activities</b>				
<b>Challenges</b>				

## Milne Bay

As of 26 July 2020

<b>Total Provincial Population (2020)</b>	347,546
<b>COVID-19 Response Management</b>	
Established and functioning Provincial Control Centre	-
Established and functioning Provincial Emergency Operations Centre	✓
<b>Surveillance</b>	
Receiving alerts from rural health centres	✓
Presence of provincial COVID-19 hotlines	✓
No. of rapid response teams	1
No. of contact tracing teams	-
No. of quarantine teams	-
<b>Laboratory and Waste Management</b>	
No. of available UTMs / total received	-/260
No. of functioning GeneXpert machines	1
No. of available GeneXpert cartridges / total received	-/50
No. of GeneXpert – trained staff	-
No. of functioning biosafety cabinets	-
No. of functioning incinerators	-
<b>Health Facilities</b>	
<b>No. of Facilities</b>	<b>No. of Beds</b>
Pre-triage sites	-
Quarantine facilities	-
Quarantine facilities (in progress)	-
Isolation facilities	1 (Alotau Hospital)
Isolation facilities (in progress)	1
ICU	1
ICU (in progress)	-
<b>Critical Care</b>	
No. of nurses trained in critical care	20
No. of anaesthetists/anaesthetic scientific officer	1/2
No. of functioning ventilators	-
No. of functioning oxygen concentrators	-

Staff Strength and Health Care Worker Training		Number	COVID-19 trained	
No. of doctors		20	-	
No. of nurses and midwives		264	-	
No. of health extension officers		29	-	
No. of community health workers		493	-	
TOTAL		806	94	

PPE Supplies Received	Received in April 2020	Received in May 2020	Received in June 2020	Stock on hand
N95 Masks	180	1,500	1,500	-
Surgical Masks	0	5,000	2,000	-
Goggles	0	200	200	-
Gloves	18,000	10,000	1,000	-
Gowns/Coveralls	180	30	860	-

Finance	Allocated (in PGK)	Expended (in PGK)
DFAT	950,000	-
MFAT	300,000	-
WHO	31,520	-
GoPNG	200,000	200,000
Provincial funds	-	-
Others	-	-

Accomplishments and activities
--------------------------------

Challenges
------------

## National Capital District

Date as of 9 August 2020

<b>Total Provincial Population (2020)</b>	449,469	
<b>COVID-19 Response Management</b>		
Established and functioning Provincial Control Centre	-	
Established and functioning Provincial Emergency Operations Centre	✓	
<b>Surveillance</b>		
Receiving alerts from rural health centres	✓	
Presence of provincial COVID-19 hotlines	✓	
No. of rapid response teams	1	
No. of contact tracing teams	1	
No. of quarantine teams	-	
<b>Laboratory and Waste Management</b>		
No. of available UTM's / total received	1000	
No. of functioning GeneXpert machines	2 (CPHL & Lawes Rd UC)	
No. of available GeneXpert cartridges / total received	300 (CPHL pathology)	
No. of GeneXpert – trained staff	4 (2 males, 3 females)	
No. of functioning biosafety cabinets	2	
No. of functioning incinerators	-	
<b>Health Facilities</b>		
	<b>No. of Facilities</b>	<b>No. of Beds</b>
Pre-triage sites	18 (16 Public clinics, Gerehu & PMGH)	N/A
Quarantine facilities	1	12
Quarantine facilities (in progress)	2	-
Isolation facilities	2 (Rita Flynn & Taurama Aquatic Centre)	156
Isolation facilities (in progress)	1	6
ICU	1 (PMGH)	4
ICU (in progress)	-	-
<b>Critical Care</b>		
No. of nurses trained in critical care	135	
No. of anaesthetists/anaesthetic scientific officer	7/2	
No. of functioning ventilators	-	
No. of functioning oxygen concentrators	-	

Staff Strength and Health Care Worker Training	Number	COVID-19 trained		
No. of doctors	244	-		
No. of nurses and midwives	704	-		
No. of health extension officers	6	-		
No. of community health workers	282	-		
<b>TOTAL</b>	<b>1236</b>	<b>94</b>		
PPE Supplies Received	Received in April 2020	Received in May 2020	Received in June 2020	Stock on hand
N95 Masks	180	3,000	5,160	-
Surgical Masks	0	4,000	114,000	-
Goggles	0	-	570	-
Gloves	12,000	8,000	22,120	-
Gowns/Coveralls	60	-	4,796	-
Finance	Allocated (in PGK)	Expended (in PGK)		
DFAT	1,900,000	-		
MFAT	170,000	-		
WHO	23,320	-		
GoPNG	200,000	-		
Provincial funds	-	-		
Others	-	-		
Accomplishments and activities				
<ul style="list-style-type: none"><li>• Risk communication awareness conducted in three areas in Port Moresby (Moresby North West, Moresby South and Moresby North East). Awareness Outreach done together with local team leaders visiting communities in Moresby North, Moresby South and Moresby North East.</li><li>• Community feedback were: (1) more emphasis on the Community Tracing and swabbing in all settlement areas; (2) need of comprehensive partnership with the community in regard to the pandemic on how to prevent it; (3) the initiative taken is a really vital and will have a major impact on our people to help prevent COVID-19 within our society.</li></ul>				
Challenges				

## Oro

As of 26 July 2020

<b>Total Provincial Population (2020)</b>	236,700	
<b>COVID-19 Response Management</b>		
Established and functioning Provincial Control Centre	-	
Established and functioning Provincial Emergency Operations Centre	✓	
<b>Surveillance</b>		
Receiving alerts from rural health centres	✓	
Presence of provincial COVID-19 hotlines	✓	
No. of rapid response teams	1	
No. of contact tracing teams	1	
No. of quarantine teams	-	
<b>Laboratory and Waste Management</b>		
No. of available UTMs / total received	-/260	
No. of functioning GeneXpert machines	1	
No. of available GeneXpert cartridges / total received	-/50	
No. of GeneXpert – trained staff	-	
No. of functioning biosafety cabinets	-	
No. of functioning incinerators	-	
<b>Health Facilities</b>		
	<b>No. of Facilities</b>	<b>No. of Beds</b>
Pre-triage sites	1 (Sioga HC)	N/A
Quarantine facilities	2 (Popondetta Hospital & Sioga HC)	-
Quarantine facilities (in progress)	-	-
Isolation facilities	1 (Old Dental Area)	-
Isolation facilities (in progress)	1 (Popondetta Hospital)	8
ICU	-	-
ICU (in progress)	-	-
<b>Critical Care</b>		
No. of nurses trained in critical care	4	
No. of anaesthetists/anaesthetic scientific officer	-/2	
No. of functioning ventilators	-	
No. of functioning oxygen concentrators	-	

Staff Strength and Health Care Worker Training	Number	COVID-19 trained		
No. of doctors	10	-		
No. of nurses and midwives	80	-		
No. of health extension officers	9	-		
No. of community health workers	107	-		
<b>TOTAL</b>	<b>206</b>	<b>34</b>		
<b>PPE Supplies Received</b>	<b>Received in April 2020</b>	<b>Received in May 2020</b>	<b>Received in June 2020</b>	<b>Stock on hand</b>
N95 Masks	180	1,500	900	-
Surgical Masks	0	4,000	2,000	-
Goggles	0	200	200	-
Gloves	18,000	-	1,000	-
Gowns/Coveralls	210	30	210	-
<b>Finance</b>	<b>Allocated (in PGK)</b>	<b>Expended (in PGK)</b>		
DFAT	450,000	-		
MFAT	300,000	-		
WHO	18,260	-		
GoPNG	200,000	200,000		
Provincial funds	-	-		
Others	-	-		
<b>Accomplishments and activities</b>				
<b>Challenges</b>				



## Western

As of 26 July 2020

<b>Total Provincial Population (2020)</b>	299,351	
<b>COVID-19 Response Management</b>		
Established and functioning Provincial Control Centre		✓
Established and functioning Provincial Emergency Operations Centre		✓
<b>Surveillance</b>		
Receiving alerts from rural health centres		✓
Presence of provincial COVID-19 hotlines		✓
No. of rapid response teams		1
No. of contact tracing teams		Not active
No. of quarantine teams		1
<b>Laboratory and Waste Management</b>		
No. of available UTMs / total received		~/1650
No. of functioning GeneXpert machines		2 out of 3 working
No. of available GeneXpert cartridges / total received		99/150
No. of GeneXpert – trained staff		3
No. of functioning biosafety cabinets		0 (the existing one is out of order)
No. of functioning incinerators		0
<b>Health Facilities</b>		
	<b>No. of Facilities</b>	<b>No. of Beds</b>
Pre-triage sites	8 (Daru, Kiunga, Balimo, Rumgimae)	N/A
Quarantine facilities	1 (Daru Provincial Hospital)	-
Quarantine facilities (in progress)	1	12
Isolation facilities	2 (Daru Provincial Hospital & Kiunga District Hospital)	24
Isolation facilities (in progress)	2 (medical equipment to be fitted)	28
ICU	1	4
ICU (in progress)	0	0
<b>Critical Care</b>		
No. of nurses trained in critical care		2
No. of anaesthetists/anaesthetic scientific officer		1/5
No. of functioning ventilators		0
No. of functioning oxygen concentrators		-

Staff Strength and Health Care Worker Training	Number	COVID-19 trained
No. of doctors	9	7
No. of nurses and midwives	19	21
No. of health extension officers	2	4
No. of community health workers	40	33
<b>TOTAL</b>	<b>70</b>	<b>65</b>

PPE Supplies Received	Received in April 2020	Received in May 2020	Received in June 2020	Stock on hand
N95 Masks	40	3,000	800	-
Surgical Masks	0	8,000	20,000	-
Goggles	0	400	400	-
Gloves	25,000	16,000	2,000	-
Gowns/Coveralls	180	200	820	-

Finance	Allocated (in PGK)	Expended (in PGK)
DFAT	950,000	-
MFAT	170,000	-
WHO	28,460	-
GoPNG	200,000	140,000
Provincial funds	-	-
Others	-	-

### Accomplishments and activities

- PEOC is in Daru, and the team is not meeting regularly according to a report. Kiunga team meets regularly on a weekly basis or when the need arises.
- Reporting is only done in Daru for ILI/SARI. According to Kiunga team Lead, pre-triage has not reported any ILI /SARI therefore not reported. Teams were advised to report POIs from Indonesia or PNG citizens crossing the border.

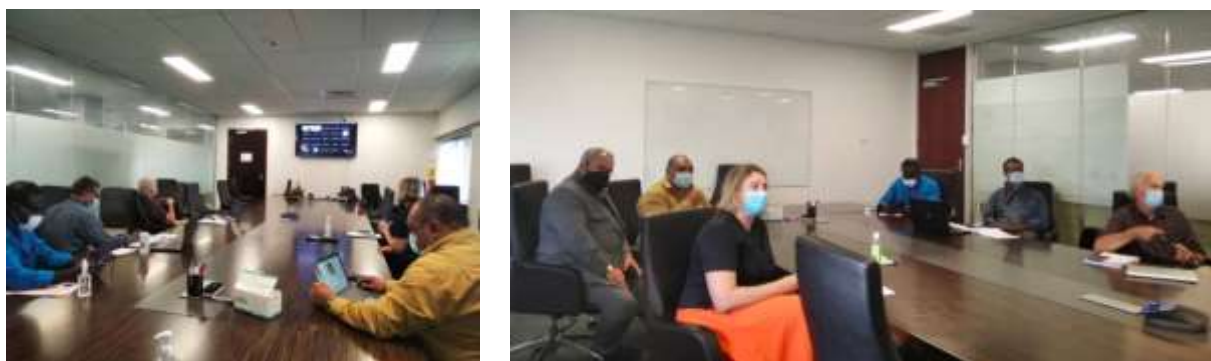
### Challenges

- Team Kiunga indicated a reduction in human resources engaged in RRT and quarantine due to non-payments.
- Daru quarantine tents were pulled down. The agreement was for 3 months and now the 3 months is up, they were advised to pull the tents down.
- Apart from COVID-19 preparedness and response, Kiunga team indicated challenges with medical supplies, with orders from 2019 still pending. What was received weeks ago was from 2014 orders which are now outdated.
- Oxygen supply to Kiunga Hospital is not available. This has caused the hospital to scale down on operation. Contractors have delays in delivering the oxygen supply.
- Expenditure is still slow due to change of signatories. So far, the only fund expended was the K200,000 given for surveillance, training and risk communication.

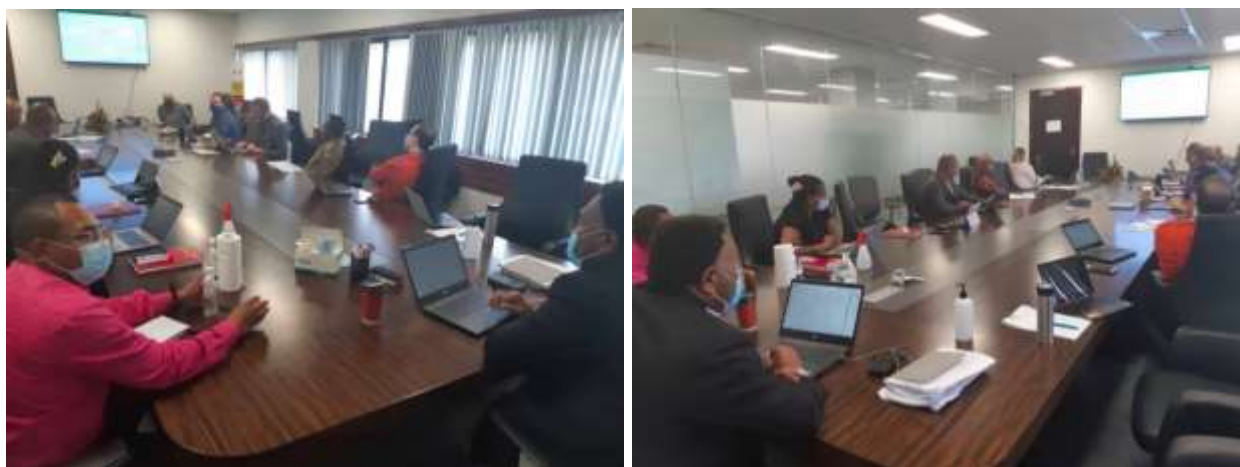
## ANNEX D – Photos



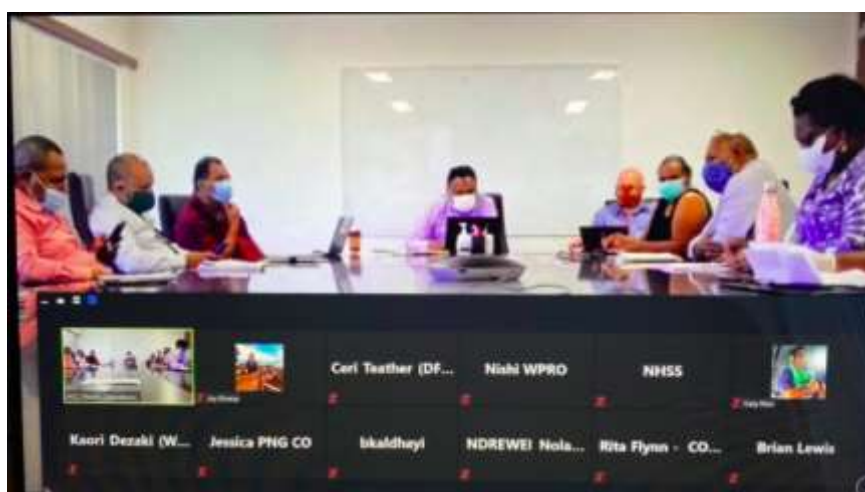
Photos 1-4. Prime Minister Hon James Marape launched the COVID-19 Awareness and Assessment Plan 2020 with Minister for Public Service, Minister for Community Development and Religion, NCD Governor and respective Secretaries and delegates.



Photos 5-6. Minister for Health Jelta Wong and Minister for Housing and Urbanisation Justin Tkatchenko participated in the Health Cluster meeting for partner coordination.



Photos 7-8. The National Control Centre convened intersectoral planning sessions for the NCC Operational Blueprint on 5-7 August 2020.



Photos 9-10. Daily meetings of the Health Operations Team at the National Control Centre in Morauta Haus.





Photos 11-12. The first delivery of essential health equipment and PPEs under the Pacific Humanitarian Pathway Initiative, in partnership with the Pacific Islands Forum Secretariat, the UN World Food Programme Pacific Office, the Australian Government and Australian High Commissions in Suva and Port Moresby, Fiji Airways, Air Niugini, National Airports Corporation, National Control Centre, WHO and UNICEF, arrived in Port Moresby.



Photos 13-14. Donated supplies and materials from WHO were handed over to clinics and health facilities to support sample collection for COVID-19 testing.



Photo 15. Contact tracing training conducted by NCD PHA and WHO to train volunteers, including 10 volunteers from St. John's Ambulance, on 03 August 2020.



Photos 16-18. Series of trainings on risk communication conducted by NCD PHA with support from NDOH and WHO.





Photo 19. NCD PHA conducted risk communications training for 30 PNGDF soldiers on 7 August 2020 with support from NDOH and WHO.



Photo 20. Public service announcement on the importance of testing for COVID-19 is aired for community awareness.



Photo 21. NCD PHA Rapid Response Team responds to people who develop symptoms in quarantine in Port Moresby.



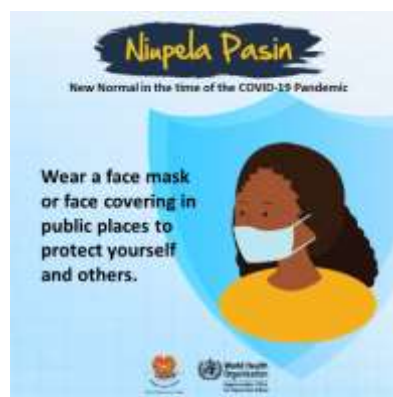
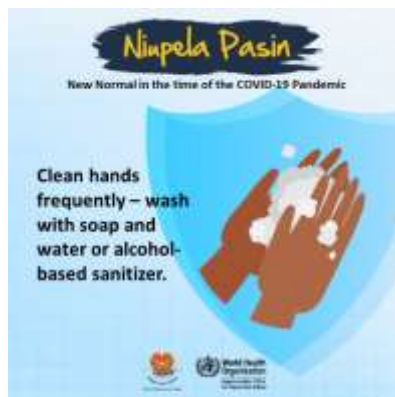
Photos 21-26. NCD PHA Risk Communications and Community Engagement Team conducted awareness outreach in communities across the National Capital District.





Photos 27-33. NCD PHA Risk Communications and Community Engagement Team conducted awareness outreach in communities across the National Capital District.

## ANNEX F – Risk Communication Materials



For more information about this Situation Report, contact:

**Dr Daoni Esorom**

A/Executive Manager, Public Health, National Department of Health  
Email: daoniesorom@gmail.com; Mobile: +675-72313983

**Mr Eric Salenga**

Information and Planning Team, World Health Organization  
Email: salengar@who.int