



Situation summary

(Highlights of the current report) Please see the Philippines Department of Health (DOH) daily [Situation Update](#) for further information.



1,276,004
Cases



1,195,181
Recoveries

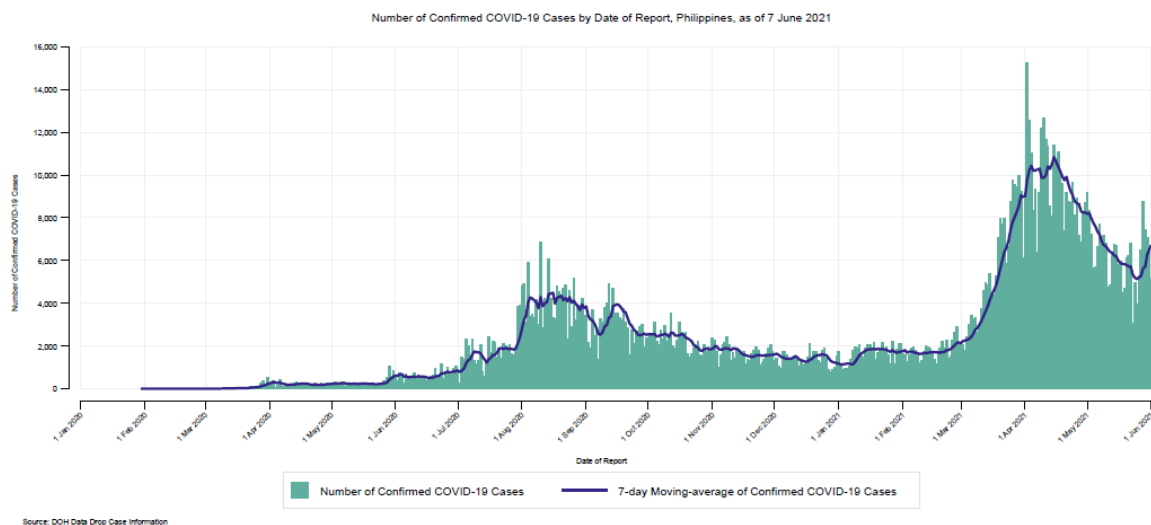


21,969
Deaths



4,632,826
Vaccinated

- Out of a total 1,276,004¹ confirmed cases reported in the Philippines as of 7 June 2021, 52% are male, with the most affected age group 25-34 years (27.5%).
- 40% of the total number of cases are from the National Capital Region (NCR), followed by CALABARZON (17.5%), Central Luzon (9%), Central Visayas (5.2%), Western Visayas (4.2%).
- Out of the total 21,969 confirmed deaths, 58.2% are male, with the most affected age group 65-74 (28.3%) followed by the age group 60-64 years (13.5%) and the age group 80+ (13%).
- 34.6% of the total number of deaths reported are from the NCR, followed by CALABARZON (13.1%), Central Luzon (12.7%), Central Visayas (9.4%), Western Visayas (5.1%).
- Cases have recently been increasing especially outside NCR. Of the total 91,298 confirmed cases in the past two weeks, 15% of the cases are from NCR, while 85% of the cases are from outside. In the two weeks prior to that, 20.3% of the total 75,880 confirmed cases were from NCR, while 79.7% were from outside.
- Currently, there are 220 laboratories performing tests for COVID-19 using RT-PCR or GenXpert. On average, over 50,000 tests were conducted per day in the last two weeks.
- Bed occupancy nationwide is at 49.9%, NCR (39.9%), CALABARZON (54.9%), Central Luzon (50.7%), Central Visayas (35.5%), CAR (42.1%).
- 4,632,826 individuals have received their 1st dose of COVID-19 vaccine. 1,412,187 (86.8 % of Priority Group A1) frontline HCW have received their first dose of vaccine and 886,420 (54.5% of Priority Group A1) HCW have received the 2nd dose.
- Variant of concern (VOC) Delta (B.1.617.2) has been detected in one additional overseas worker returning to the Philippines. This brings the total number of Delta cases detected in the Philippines to 13.



¹ Data as of 7 June 2021 can be found in the following [DOH's BEAT COVID-19 report](#).



Transmission stage assessment

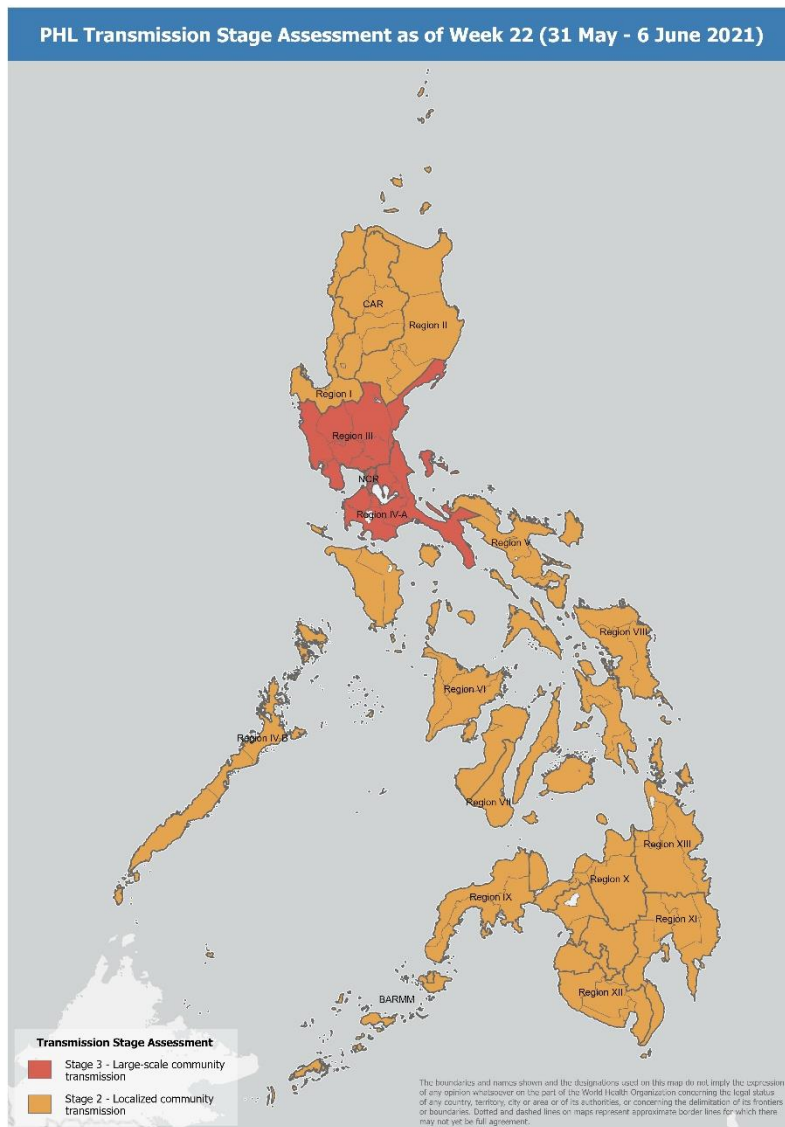
The Philippines remains in **Stage 2, localized community transmission** with some geographic areas showing higher transmission intensity and indications of widespread community transmission. There is ongoing evidence of higher transmission in Region III, Region IV-A, and in the NCR which are at **Stage 3, large scale community transmission**.

Regional assessments

Regional assessments for Region V and Region XI have shown an increasing trend in the number of cases and in health care utilization. Increasing trends in the number of cases are also seen in other regions located in Mindanao. Monitoring of other regions such as CARAGA, Region XII SOCCSKSARGEN and Region VIII are ongoing in coordination with DOH Center for Health Development (CHD) offices.

In terms of the overall situation of the Philippines, there were 45,824 new cases (42 cases per 100,000 population) reported in week 22, higher than the previous week (43,816 new cases, 40 cases per 100,000 population). The 7-day positivity rate (number of individuals that tested positive/number of individuals tested) was 13% (41,124/307,437) for week 22, and 12% (42,682/341,969) in the previous week. There was an increase in the daily number (7-day average) of COVID-19 dedicated ICU beds occupied (1,926 beds this week compared to 1,827 beds last week) as well as an increase in the daily number (7-day average) of COVID-19 dedicated mechanical ventilators occupied compared to last week (1,041 ventilators vs 1,023 ventilators).

Footnote: Information on COVID-19 cases, testing aggregates and dedicated COVID-19 ICU beds and mechanical ventilators were extracted on 8 June 2021 from the DOH COVID-19 Case Tracker. 2021 population projection for PHL: 110,198,654.





Updates from the last 14 days

Epidemiological updates

As of 7 June 2021, a total of **1,276,004** confirmed COVID-19 cases and **21,969** deaths have been reported in the Philippines. The case fatality ratio is 1.7%.

Epi Update COVID-19	Tests 672,703 Tests past 14 days	Cases 91,298 Cases past 14 days	Deaths 1,986 Deaths past 14 days	ICU Occupancy 58.1%
	12,961,334 Cumulative unique individuals tested	1,276,004 Cumulative cases	21,969 Cumulative deaths	3,407 ICU beds for COVID-19 cases
	10.5% Cumul. Positivity rate			
Health service provision COVID-19	19,228 Healthcare worker cases as of 24 May (cumulative)	1,270 Hospitals admitting COVID-19 patients	31,233 Non-ICU beds for COVID-19 patients	133,657 TTMF beds for COVID-19 cases
	18,852 HCW cases as of 31 May (cumulative)			

Strategic approach to COVID-19 Prevention, Detection and Control

Health Service Delivery

- As the One Hospital Command Center (OHCC) seeks to optimize the use of critical care services in the hospitals and strengthen the health system's capacity, WHO Philippines (WHO) continues to provide technical assistance towards its institutionalization as the National Patient Navigation and Referral System in the country. The OHCC recently relocated to the Philippine International Convention Center, and as it expands its service capacity, WHO has provided 20 laptops, with the financial assistance of the European Union. This will help OHCC provide continuous support to callers by equipping its staff with the tools necessary to address both COVID-19 and non-COVID-19 emergency concerns by providing a strong communication line and proper coordination between health facilities in the referral and patient navigation.



Dr Rabindra Abeyasinghe, WHO Representative to the Philippines, hands over computer units to Leopoldo Vega, Undersecretary of Health, at the Philippine International Convention Center on 9 June 2021. © WHO/J Orbina

- With the current surge of cases in the country, especially in regions of Visayas and Mindanao, WHO continues to provide its technical assistance in monitoring the COVID-19 bed allocation and hospital and isolation facility occupancy. Considering the limited healthcare capacity of regions in Visayas and Mindanao, it is critical to ensure adherence to the healthcare pathways leading to appropriate referral and back referral systems and efficient and rational utilization of these facilities. Collaboration with the Country Office IMT and CHD in areas experiencing the surge provided an opportunity to discuss the priority areas and discuss their current concerns and the needed technical assistance on health systems strengthening.

Laboratory and Testing

- Over the past two weeks, the 220 laboratories using RT-PCR and GeneXpert platforms sustained a daily average of about 50,000 tests. The nationwide testing yields a daily average of about 13% cumulative positivity rate.
- The WHO Country Office continues to support the Philippines in increasing its biosurveillance capacity. Based on comprehensive facility assessments, the WHO Country Office will continue to procure instruments and parts to enable automation of sample processing, including replacement of parts of the existing genomic sequencing machine at the Philippine Genome Center.
- To continuously improve the reliability and efficiency of COVID-19 laboratory testing services, the WHO Country Office recommences assistance to the DOH in the development of the national COVID-19 laboratory quality assurance program. To better understand current operations, processes and procedures in public and private COVID-19 laboratories, laboratory facility visits in NCR were conducted. The information obtained was incorporated into laboratory quality management system training modules that are currently being developed for COVID-19 laboratory managers. In addition, and in coordination with the WHO Western Pacific Regional Office (WPRO), external quality assurance providers were provided to the Research Institute for Tropical Medicine (RITM) to be used for laboratory performance evaluation and training purposes.



Visit of Dr Collette Allan, WHO GOARN expert, to Makati Medical Center Molecular Laboratory on 3 June 2021.
© WHO/J Tonolet

Surveillance and Contact Tracing

Surveillance

- The WHO Country Office continues to collaborate with the DOH Epidemiology Bureau on the analysis of Variant of Concerns (VOC).

Contact Tracing

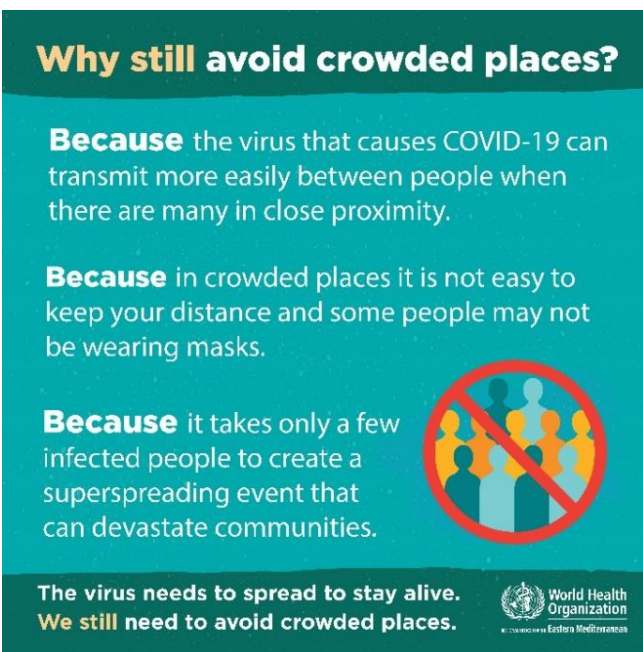
- The WHO Country Office continues to support the City Epidemiology and Surveillance Unit (CESU) in the next steps of the successful pilot run on the use of digital contact tracing solutions in Quezon City. The proof of concept of the initiative was also presented to the DOH-Epidemiology Bureau. Since the workflow and data analytics produced meaningful results, the national office will be reviewing the streamlining process for possible adoption.
- The WHO Country Office provided guidance and technical inputs on digital contact tracing solutions to the National Task Force for COVID-19 Response.

Risk Communication and Community Engagement

- The WHO Country Office facilitated media spokesperson training sessions for Cabinet secretaries, the DOH expert panel and senior DOH officials to provide skills to DOH spokespersons and resource persons on how to respond effectively to current issues related to COVID-19 and the vaccination rollout.
- A virtual learning session on COVID-19 vaccines was conducted on 25 May 2021 with WHO's civil society partner organizations Families Choice, BITE Family Planning and Birthing Clinic, and Davao Medical School Foundation.
- The WHO Country Office continues to provide technical assistance to CHD-NCR. To strengthen CHD's collaboration with faith-based organizations, DOH Regional Director, Dr Gloria Balbao, participated in a discussion on COVID-19 prevention and vaccine awareness organized by Caritas on 4 June 2021.



- On 8 June 2021, the WHO Country Office organized a virtual training session with Caritas Philippines on COVID-19 prevention and vaccine awareness in the community. The session had participants from 50 dioceses all over the country and reviewed risk communication and community engagement strategies to protect the most vulnerable by increasing access to information and health services, promoting preventative measures and raising vaccine awareness. The session was a joint activity with the Health Service Delivery Pillar.



Why do we still need to avoid crowded places?

#COVID19

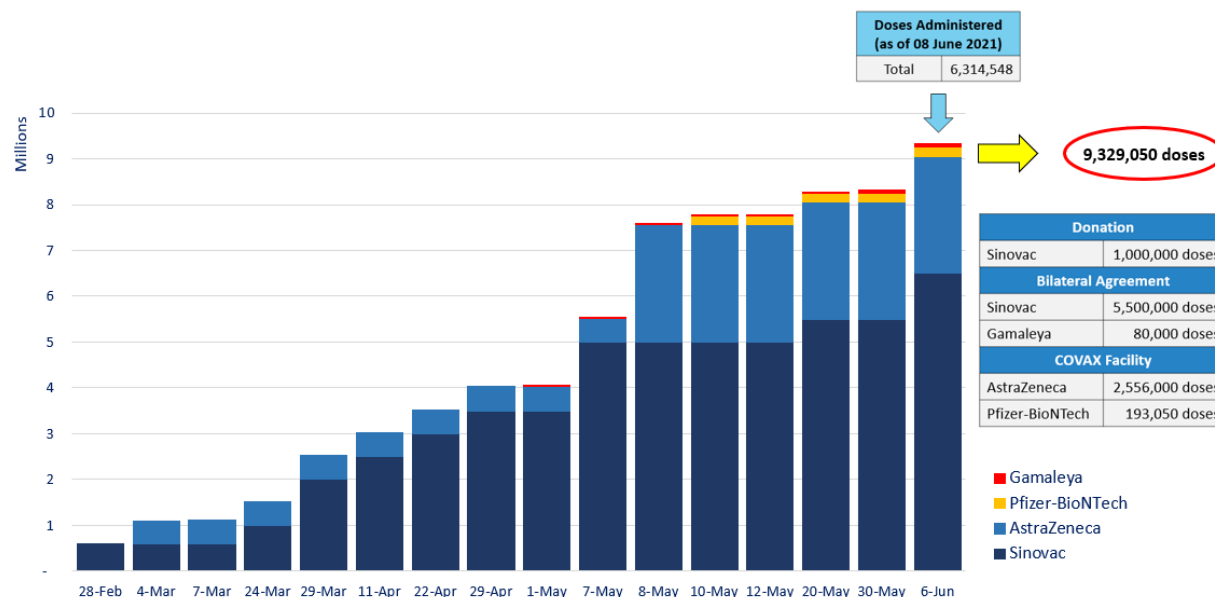
#InThisTogether

Vaccines

- As of 8 June 2021, 4,632,826 Filipinos have been vaccinated with their first dose against COVID-19 and 1,681,722 Filipinos have completed the 2nd dose.
- On the occasion of the Labor Day celebrations on 1 May 2021, a symbolic vaccination of priority group A4 was carried out in collaboration with the Department of Labor and Employment (DOLE).
- As of 8 June, 1,412,187 frontline healthcare workers (HCW) in the Philippines, or 86.8% of the 1,626,323 masterlisted eligible Priority Group A1 population, have received their first dose. 886,420 HCW, or 54.5% of Priority Group A1, have received their 2nd dose. Furthermore, 1,622,613 senior citizens (Priority Group A2) and 1,568,809 individuals with comorbidity (Priority Group A3) have received their 1st dose, while 415,540 senior citizens and 373,493 individuals with comorbidity have already completed their 2nd dose.



Cumulative Total of COVID-19 Vaccine Arrivals in the Philippines as of 8 June 2021



Operations Support Logistics

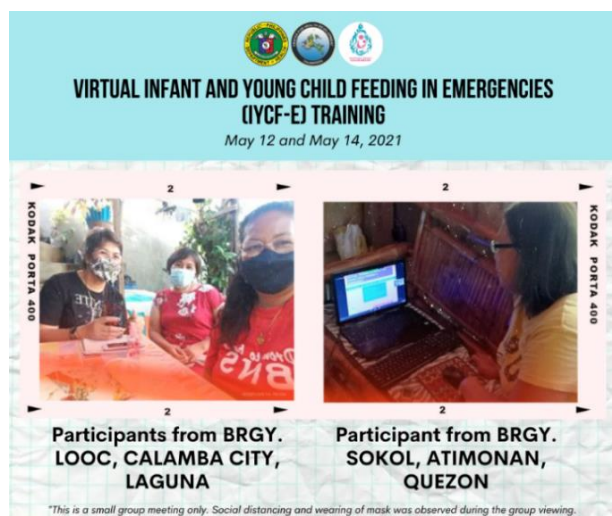
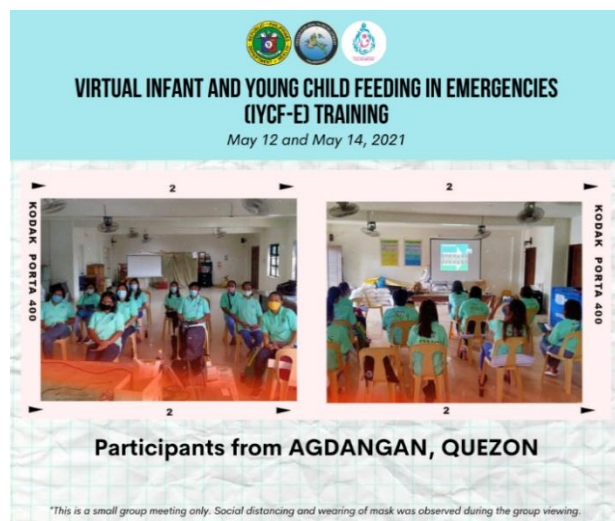
- To meet DOH's needs of dexamethasone, the Western Pacific Regional Office (WPRO) has requested dexamethasone from a global stockpile. In addition, the Global Fund is moving forward with a fast-track procurement of dexamethasone.
- A preliminary assessment of access to oxygen is being conducted by the WHO.
- The WHO Country Office is coordinating the delivery of one million WHO-donated FFP2 respirator masks to the Office of Civil Defense warehouse in support of the DOH's COVID-19 response activities.

Updates from UNICEF

Community Support

- UNICEF donated 5,000 sets of personal protective equipment to the Department of Health Metro Manila Center for Health Development to support its response to the recent COVID-19 surges in the National Capital Region.
- UNICEF, with support from partners, continues to lead capacity-building activities for nutrition in selected provinces. From January to May 2021, a total of 8,157 individuals at the municipal, barangay and household levels were trained in Harmonized Maternal Nutrition Infant and Young Child Health and Nutrition, Family Mid Upper Arm Circumference, the National Code of Marketing Breastmilk Substitutes, Breastmilk Supplement, and Other Related Products (EO51) and Philippine Integrated of Acute Malnutrition Training. A series of catch-up training will continue for 2021 through remote and face-to-face modalities where possible to ensure that essential services are continued and strengthened.
- UNICEF supported the Region IV-A training to ensure that systems strengthening activities, adaptive capacities, nutrition, and health promotion are sustained at the local level. A total of 1,389 community health workers and nutrition staff and officers were trained on virtual Infant and Young Child Feeding in Emergencies, and 36 Community Health Workers (Barangay Nutrition Scholars) and Nutrition Focal

Points (NDDP, NAOs, PNAO, MNC) were trained on *Family Mid-Upper Arm Circumference Approach – Training of Trainers*.



- UNICEF supported the delivery of 20 cartons of Rehydration Solution for Malnutrition (ReSoMal) to support the continuity of acute malnutrition services in Health Facilities. The ReSoMal is an augmentation to DOH supplies in the management of acute malnutrition to support Levels 2 and 3 facilities for the next six months. The ReSoMal augmentation is projected to reach over a thousand children requiring management of Severe Acute Malnutrition with complications.



Nerissa Mabbayad, Nutrition Program Manager of Region II receives two cartons of ReSoMal on 1 June from UNICEF to support Inpatient Therapeutic Care Facilities across the Cagayan Valley.

- With support from UNICEF, social media airing of the complementary feeding campaign was continued by the National Nutrition Council which has reached over 2 million individuals via its Facebook page.
- Under the partnership with the ECCD Council (and member agency DSWD), Humanity and Inclusion (Handicap international Federation – Philippines Branch), Plan International Philippines and LGU partners, 165 child development workers from 11 municipalities in Samar, Northern Samar and Zamboanga del Norte were trained on providing support to parents/primary caregivers on the use of the Core Developmental Milestones tool. The tool will be used to monitor the development of children 3-4 years old, especially during this time of pandemic, when there is no in-person conduct of Child Development Center classes and development and learning activities are conducted at home. These child development workers also serve as trainers for the rest of the child development workers in the municipalities enabling them to support more parents/primary caregivers.
- As part of UNICEF technical assistance to the reopening school, UNICEF Philippines gave a presentation to the National Economic Development Authority Regional Development Councils on 24 May 2021 on the heatmap of COVID-19 cases. This enables the accurate identification of areas where limited in-person classes can be piloted.

